

## This document contains:

- The Event Covid-19 risk assessment and risk mitigation plan in accordance with the [FEI Policy for Enhanced Competition Safety during the Covid-19 Pandemic](#)
- The Event Approved Schedule

*Given the current covid-19 situation, please note that the FEI's approval of a Schedule should not be taken as an absolute guarantee that the Event will definitely go ahead. The decision whether the Event can take place must be made by the OC and NF in close consultation with the applicable domestic government and public health authorities. It is the responsibility of each Participant to check the status of the Event prior to planning his/her travel to the Event.*

## Risk assessment for COVID-19

The questions below will enable OCs to review the additional considerations specific to sports, and thus inform their risk assessment of COVID-19 associated with their Event. This will help OCs understand and manage any additional risk from COVID-19.

The risk assessment should be reviewed and reassessed regularly during the planning phase and updated immediately prior to the transition to the operational phase, especially in light of the rapidly evolving nature of the outbreak. Reference should be made to the latest technical guidance and situation reports on the WHO website.

The risk assessment for COVID-19 associated with the Event must be coordinated and integrated with the host country's national risk assessment for COVID-19. The person completing the questionnaire should include input from the local public health authorities, consult WHO's latest technical guidance and ensure that there is an up-to-date evaluation of the epidemiological situation.

**Please answer Yes (1) or No (0) to the following questions to determine a risk assessment score that incorporates factors specific to sporting events**

Additional risk of COVID-19 to the sporting event	Yes (1)/No (0)	Score
Will the event be held in a country that has documented active local transmission of COVID-19 (community spread)?	1	1
Will the event be held in a single venue or multiple venues/cities/countries? <i>(single venue = 0; multiple venues = 1)</i>	0	0
Will the event include international participants (athletes and spectators) from countries that have documented active local transmission of COVID-19 (community spread)? <i>(NB: if the Events does not involve spectators, please clarify this in the comments to the questions in relation to spectators in the "Mitigation Checklist" sheet)</i>	1	1
Will the event include a significant number of participants (athletes or spectators) at higher risk of severe COVID-19 disease (e.g., people over 65 years of age or people with underlying health conditions)?	0	0
Will the event include sports that are considered at higher risk of spread for COVID-19 (eg, contact sports)?	0	0
Will the event be held indoors? <i>(Yes = 1; No = 0)</i>	0	0
<b>Total COVID-19 risk score</b>		<b>2</b>

## Mitigation checklist for COVID-19

Mitigation measures assess the current effort and planning to reduce the risk of spread of COVID-19 disease for the event. As mitigation measures can reduce the overall risk of the sporting event contributing to the spread of COVID-19, they should be taken into account after the risk assessment has occurred to gain a clearer understanding of the overall risk of transmission and further spread of COVID-19, should the event be held. Together with the risk assessment score, the mitigation measure will contribute to the decision matrix and influence the assessment of the overall risk of transmission and further spread of COVID-19 in relation to the event.

Topic	Key consideration	Score Yes/Completed (2), Maybe/In progress (1), No/Not considered (0)	Weighting	Total score	Comments
Understanding of the overview of the current COVID-19 situation by the OC	Have the relevant OC and responsible staff been informed about the <b>latest available guidance on the COVID-19 outbreak</b> (official web resources available from WHO, CDC, ECDC, UN, local public health authorities)? And are the OC and staff concerned committed to following the available guidance?	2	1	2	
	Is the OC aware of global and local daily situation reports as provided by WHO or local public health authorities?	2	1	2	
	Do the OC and responsible staff understand the risks and transmission routes of COVID-19, the steps that Event attendees can take to limit spread, the recognized best practices (including respiratory etiquette, hand hygiene, physical distancing, etc.), and the travel restrictions adopted by different countries that may affect the Event?	2	1	2	
Event emergency preparedness and response plans	Has a <b>contingency medical response plan for COVID-19</b> been developed for the Event?	2	3	6	
	Does the contingency medical response plan include <b>information about how attendees should interact with the host country healthcare system</b> (e.g. hotline/helpline telephone number, medical teams and first-aid points for the Event, local health care system)?	2	3	6	
	Is there an <b>Emergency COVID-19 Outbreak Response Coordinator/Team</b> in the OC or other structure structure for the Event with defined roles and responsibilities, coordinating the health preparedness and response planning for the outbreak?	2	2	4	
	Has the host country or OC requested <b>support from WHO and/or local public health authorities</b> ?	2	3	6	
	<b>Has the OC acquired the following supplies to help reduce the risk of transmission of COVID-19?</b>				
	Personal protective equipment (e.g. masks, gloves, gowns) for onsite medical personnel	2	3	6	
	Hand sanitizer and alcohol rubs/gels, tissues, frequently replaced soap canisters and closed bins for safe disposal of hygienic materials (e.g. tissues, towels, sanitary products) in washrooms and changing rooms	2	3	6	
	Hand sanitizers and alcohol rubs for all entrances and throughout the venue	2	3	6	
	<b>If a person feels unwell/ shows symptoms of an acute respiratory infection during the Event:</b>				
Is there a procedure for athletes or spectators to clearly identify <b>whom to contact and how to do so</b> if they or other Event participants feel unwell?	2	3	6		

	Is there a protocol on whom the OC should contact in the host country to report suspected cases and request testing and epidemiological investigations?	2	3	6	
	Are <b>first-aid services or other medical services</b> in-place and equipped to support patients with respiratory symptoms?	2	2	4	We'll have an equipped ambulance at the showground and if needed the patient will be moved to the nearest Hospital that is located only 5 minutes from the facilities.
	Are there <b>isolation rooms or mobile isolation units</b> available onsite?	0	2	0	They should go to the relevant health authority.
	Are there any <b>designated medical facilities</b> that manage patients with COVID-19 infection in the host country?	2	2	4	
	Are there <b>transportation services with trained medical professionals</b> available to transport critically ill patients with severe acute respiratory infections to a hospital or to evacuate them from the host country, if necessary?	2	2	4	
	Has a <b>cleaning schedule</b> been developed to ensure the venue is clean and hygienic – wiping surfaces and any equipment regularly with disinfectant is strongly recommended (before, during and after the event and between each round of competition)?	2	3	6	
	Are there established <b>screening measures</b> , including temperature checks in place for participants at the point of entry, venues, routes and on-site medical facilities (first-aid points)? (Please specify in Comments what these screening measures include)	2	3	6	The temperature of everyone will be taken at the arrival to the showground.
	Is the host country conducting COVID-19 <b>laboratory diagnostic tests</b> ? (If Yes, please specify in comments the type of COVID-19 diagnostic test used)	2	3	6	
	Does the host country have a <b>national public health emergency preparedness and response plan</b> that can address severe respiratory diseases, including COVID-19?	2	2	4	
	Is there a <b>preliminary agreement by the host country to provide care</b> for any COVID-19 cases connected with the Event?	1	3	3	
	If the Event is for a duration of 14 days or longer, does the medical response plan for the event include resources and protocols for managing all public health interventions that would be necessary and supporting the national public health authorities if participants are infected and become unwell at the Event? (If the event is for less than 14 days, please score 0)	0	3	0	
	If the Event is for less than 14 days, does the medical response plan include protocols for OCs to notify all participants of possible exposure to COVID-19 if the OCs are made aware of any suspected or confirmed cases that attended the Event? (If the event is for 14 days or longer, please score 0)	2	3	6	
<b>Stakeholder and partner coordination</b>	Is there an established mechanism for collaboration and coordination between <b>the health and security sectors</b> , which is considered as crucial?	2	2	4	
	Are there agreed, clear and easily understood processes in place for <b>reporting to external multi-sectoral stakeholders</b> (including surveillance authorities, WHO, CDC, ECDC, etc.) and disseminating risk communication messages (Media)?	2	2	4	
<b>Command and control</b>	Is there a decision-making authority/body and an agreed procedure to <b>modify, restrict, postpone or cancel the Event</b> related to the evolving COVID-19 outbreak?	2	3	6	
	Are there arrangements to activate a <b>strategic health operations centre</b> if there are suspected COVID-19 cases in connection with the Event?	2	2	4	
	Have the OC and staff undergone training and exercises on personal safety procedures and emergency mitigation measures (including those specifically listed in this checklist)?	1	3	3	
	Is there a <b>risk communication strategy</b> for the Event in regard to COVID-19?	2	3	6	

Risk communication	Is there a <b>designated person(s) to lead media</b> activities and tasked with managing all external communications with national and international government officials, the general public, and the media? (If yes, please identify the spokesperson in comments)	2	2	4	
	Has there been <b>monitoring of national and international media and social media</b> established for <b>rumours</b> to be able to counter them early? (Please explain in the comments what protocols are in place for counter messaging)	2	2	4	
	Has coordination been set up with major official media channels and social media sites such as Twitter, Facebook and Instagram so that messaging can be coordinated with, and assisted by, the platforms to provide targeted messaging from OCs (including messaging to counter fake news and rumours, and proactive messaging about the status of the sporting event, including changes)?	2	2	4	
Public health awareness of COVID-19 before and during the event	Has <b>public health advice</b> on clinical features of COVID-19, preventive measures, especially respiratory etiquette, hand hygiene practices, and physical distancing, been shared with all staff involved in the Event, athletes, the public, and personnel of all relevant stakeholders?	2	3	6	
	Has information on the <b>at-risk populations</b> been provided to all athletes, the public and others so they may make an informed decision on their attendance based on their personal risks?	2	3	6	
	Has public advice included information on the meaning of the following <b>measures: quarantine, self-isolation and self-monitoring</b> ?	2	2	4	
Surge capacity	<b>Are there any surge arrangements in place in the event of a public health emergency during the Event - (i.e. suspected and confirmed cases of COVID-19)?</b>				
	Do these surge arrangements include funding for mitigation measures?	2	3	6	
	Do these surge arrangements include stockpiles of equipment (e.g. personal protective equipment, etc.)	2	3	6	
	Do these surge arrangements include training of extra staff?	2	2	4	
	Do these surge arrangements include volunteers?	2	2	4	
Specific mitigation measures	Will there be <b>daily health checks</b> of athletes/competitors?	2	2	4	On arrival at the showground the temperature of each athlete will be taken.
	Will the <b>athletes be separated from other groups</b> , such as officials, support staff and spectators, to limit transmission?	2	2	4	
	Are there measures in place to <b>limit the sharing of equipment, water bottles, towels, etc.</b> ?	2	3	6	
	Will athletes be given closed <b>containers to allow for the safe disposal or storing of all hygienic materials</b> (e.g. tissues, towels, etc.)?	2	3	6	
	Will the Event have <b>designated seating</b> for all spectators?	0	3	0	The competition will be held without the presence of the public or spectators and behind closed doors.
	Does the designated <b>seating provided allow for physical distancing</b> between spectators (minimum of 1 metre)?	0	2	0	
	Have <b>pre-travel health checks</b> been performed on all athletes to ensure underlying co-morbidities, medications, allergies, etc. are documented?	1	2	2	

Sum of mitigation measures	198
<b>Total mitigation score (%)</b>	<b>90</b>

198

## Event overall risk score

The decision matrix takes the risk score and the mitigation score to provide a colour determination. This colour determination identifies the total risk of transmission and further spread of COVID-19 in relation to the Event. The "Colour Determination" key below the decision matrix describes the total risk for each colour.

Total COVID-19 risk score (from "Risk Assessment" Tab)	2
--	---

Total mitigation score (from "Mitigation Checklist" Tab)	90
--	----

## Risk Vs. Mitigation Matrix

Total Risk Assessment Score	Very Prepared to Mitigate COVID-19 Impacts (76-100)	Somewhat Prepared to Mitigate COVID-19 Impacts (51-75)	Somewhat Unprepared to Mitigate COVID-19 Impacts (26-50)	Very Unprepared to Mitigate COVID-19 Impacts (0-25)
0 - Negligible	Very low	Very low	Very low	Very low
1 - Very Low Risk	Very low	Very low	Low	Low
2 - Low Risk	Low	Low	Low	Moderate
3 - Moderate Risk (low-moderate)	Low	Moderate	Moderate	Moderate
4 - Moderate Risk (high-moderate)	Moderate	Moderate	High	Very High
5 - High Risk	High	High	Very High	Very High
6 - Very High Risk	Very High	Very High	Very High	Very High

KEY FOR COLOUR DETERMINATION OF OVERALL RISK	
VERY LOW	Overall risk of transmission and further spread of COVID-19 in relation to the Event is considered <u>very low</u> .
LOW	Overall risk of transmission and further spread of COVID-19 in relation to the Event is considered <u>low</u> . Recommend checking whether mitigation measures can be strengthened.
MODERATE	Overall risk of transmission and further spread of COVID-19 in relation to the Event is considered <u>moderate</u> . Recommend <u>significant</u> efforts to improve mitigation measures or reduce risk of transmission (decrease risk assessment score).
HIGH	Overall risk of transmission and further spread of COVID-19 in relation to the Event is considered <u>high</u> . Recommend <u>significant</u> efforts to improve <u>both</u> mitigation measures and reduce risk of transmission (decrease risk assessment score).
VERY HIGH	Overall risk of transmission and further spread of COVID-19 in relation to the Event is considered <u>very high</u> .



# SUNSHINE TOUR

since 1994

## PROTOCOL for the AUTUMN TOUR at DEHESA MONTENMEDIO 2020

### CSI3\*/CSIYH\* 30th September - 11th of October

The following protocols and procedures will be established ensuring that the Sunshine Tour S.L. safely hosts this competition here at Montenmedio. Horse numbers have been limited. Thanks to the large size of our facilities and the experience of our showground teams, adequate safety measures are in place that minimise risks associated with COVID-19 transmission and that follow the guidelines set up by the Higher Sports Council and the Spanish Royal Federation Spanish of Horse Riding.

#### **1.GENERAL:**

- Competition will take place **without the presence of the general public and 'behind closed doors'**. **In order to gain access the installations accreditation will be required.**
- The number of people allowed to access the competition is restricted to the minimum necessary for the event to run properly, that it will be 3 people per rider (1 groom, 1 partner & 1 horse owner).
- On arrival at the showground your temperature will be taken. Should it exceed 37.5 degrees centigrade you will be asked to put on a mask and directly leave the premises, placing yourself in immediate contact with the relevant health services.
- **All persons on the venue must wear a mask** that covers both your nose and mouth (surgical masks will be on sale at the Show Office), except:
  - o When mounted on a horse.
- There will be regular disinfection of all communal areas during the day (bathrooms, stable areas, showers etc).



# SUNSHINE TOUR

since 1994

- Hydro-alcoholic gels will be available throughout the premises and you will be expected to use these regularly to sanitize your hands when you access any area, such as the stables, the horse showering stations, the bathrooms and showers, restaurants, the Show Office, judges boxes and the warm up areas. There will be regular ventilation of closed spaces including the warehouses, restaurants, offices, bathrooms, showers and judges boxes etc.
- In the case that you experience any symptoms related to Covid-19 you must cancel your entries and may not attend / must leave the showground.

## **2. ON ARRIVAL AT THE SHOWGROUND:**

- On your arrival the horses will be placed in their assigned stables by our Stable Manager.
- Passports and travel permits will be passed to the Stable Manager.
- Once documents have been passed to the Show Office you will be provided with a file containing your competition numbers, accreditation for any members of your team and a written Protocol that must be followed during your stay with us. Please ensure that you read the Protocol carefully.
- **Please make sure that you wear a mask on any visit to the Show Office.**
  - o In the Show office there will be surgical grade masks on sale.
  - o There will be a limit to three people in the Show Office at any one time. Each secretary will attend only one person at a time, on this front we strongly recommend that you do not come to the office in groups, but send a delegated person.
  - o **We stress that you only come to the Show Office when it is absolutely essential and that you use the online App to do most of your general planning and contact with showground staff (see point 4).**
  - o *Riders will find their entries and all other details are on the online App in a digital format. In the case that it is not feasible for a rider to use this application please*





# SUNSHINE TOUR

since 1994

*get in contact with us so that we may provide the rider , on arrival at the showground, with an accreditation wristband.*

- *Numbers must be returned to the office at the end of the competition. On return of your numbers you will be able to pick your horse's passport. If you lose your number or fail to return it, the charge will be 6€/number. Of course you may use your own numbers once you know which you have been allocated. (Your number will remain the same for the three weeks of the completion.)*

### **3. STABLE AREA:**

- The allocation of stables has meant that empty stables will be left between groups of riders. These are not to be used.
- We recommend that everyone takes the utmost care to sanitize their own allocated areas.
- Hydrogels will be available both at the entrances to the stable areas and at the horse shower areas.
- The horse showers will be regularly sanitized by our staff. The use of the hydrogel before using these facilities is obligatory.

### **4. SECRETARY:**

We recommend using the **"Sunshine Tour Mobile" App (available for IOS & Android)** for all your orders and planning at the competition:

- **Entries.**
- **Results.**
- **Videos:** using the App you can access and download all your videos for **FREE**.
- The App will send you **notifications** of any program or timetable changes and it will provide you with all the information you need about the Show (amongst other things)



# SUNSHINE TOUR

since 1994

it contains a short program, plan of the installations and personalised competition times etc.)

- **Orders for forage etc can be made by merely entering your stable number and stable Zone (A or B). You may also accredit your groom to make orders on your behalf.**
- **Live Streaming. (also available on our website at [www.sunshinetour.net](http://www.sunshinetour.net)).**
- **Accounts.** Your account will be forwarded to you by e-mail and should be paid by a bank transfer. Once payment is confirmed the Show Office will send you an appointment so you may pass by and collect your documents, return your number etc.
- ***Following the BOE guidelines contactless payments should be made.***

**We must stress that you may only come to the Show Office if absolutely essential and unavoidable and that you must use the App for activities and requests.**

You can contact the show / accounting office as follows:

- **Show Office: +34 956 447 125 (Ext.1) / +34 649 293 273 (WhatsApp) - [sunshinetour@sunshinetour.net](mailto:sunshinetour@sunshinetour.net)**
- **Accounting Office: +34 956 447 125 (Ext.2) / +34 673 35 26 01 (WhatsApp) - [contabilidad@sunshinetour.net](mailto:contabilidad@sunshinetour.net)**

## **5. WARM UP ARENAS (NUMBERS 6 y 7):**

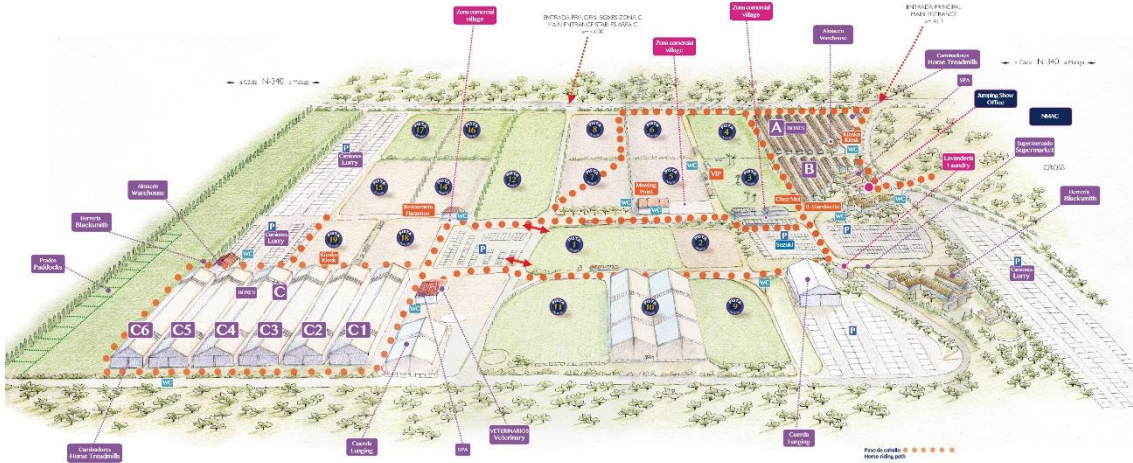
- Each competition arena will have a specific warm up arena.
- Access to the arenas will be controlled at all times, only **25** horses that are entered in the current /relevant class will be allowed entry.
- Arena **10** is allocated for free access for training.
- Arena **2** is reserved for lunging only.
- Only **ONE** person per rider may enter the warm up arenas.



# SUNSHINE TOUR

since 1994

- The OC are in charge of setting up and disinfecting the warm up fences, replacing fallen poles and also of raking etc.



In order to minimise contact **there will not be any prize giving ceremonies.** This follows the guidelines from the Health Ministry. However the top three placed in each class may collect their trophies and / or rosettes from the Show Office. This would be best done at the end of the show if at all possible.

## I. DENOMINATION OF THE EVENT

Venue: Vejer de la Frontera - Autumn Tour Dehesa Montenmedio 2020

Date: Week 3: CSI3\* CSIYH\* 30th Sep.- 4th October      NF: ESP  
 Week 4: CSI3\* CSIYH\* 7th - 11th October

Indoor:       Outdoor:

### EVENT CATEGORIES:

- |                                 |                                  |   |                                   |                                   |
|---------------------------------|----------------------------------|---|-----------------------------------|-----------------------------------|
| CSIO5* <input type="checkbox"/> | CSI5*-W <input type="checkbox"/> | CSI5* <input type="checkbox"/>              | CSIU25-A <input type="checkbox"/> | CSIU25-B <input type="checkbox"/> |
| CSIO4* <input type="checkbox"/> | CSI4*-W <input type="checkbox"/> | CSI4* <input type="checkbox"/>              | CSIY-A <input type="checkbox"/>   | CSIY-B <input type="checkbox"/>   |
| CSIO3* <input type="checkbox"/> | CSI3*-W <input type="checkbox"/> | CSI3* <input checked="" type="checkbox"/>   | CSIJ-A <input type="checkbox"/>   | CSIJ-B <input type="checkbox"/>   |
| CSIO2* <input type="checkbox"/> | CSI2*-W <input type="checkbox"/> | CSI2* <input type="checkbox"/>              | CSIch-A <input type="checkbox"/>  | CSIch-B <input type="checkbox"/>  |
| CSIO1* <input type="checkbox"/> | CSI1*-W <input type="checkbox"/> | CSI1* <input type="checkbox"/>              | CSIV-A <input type="checkbox"/>   | CSIV-B <input type="checkbox"/>   |
| CSIOY <input type="checkbox"/>  |                                  | CSIL1* <input type="checkbox"/>             | CSIAm-A <input type="checkbox"/>  | CSIAm-B <input type="checkbox"/>  |
| CSIOJ <input type="checkbox"/>  |                                  | CSIYH2* <input type="checkbox"/>            | CSIP <input type="checkbox"/>     |                                   |
| CSIOF <input type="checkbox"/>  |                                  | CSIYH1* <input checked="" type="checkbox"/> |                                   |                                   |
| CSIOCh <input type="checkbox"/> |                                  |   |                                   |                                   |

Championship       Games

## II. GENERAL CONDITIONS

- FEI Statutes, 24<sup>th</sup> edition, effective 19 November 2019
- FEI General Regulations, 24<sup>th</sup> edition, 1<sup>st</sup> January 2020
- FEI Veterinary Regulations, 14<sup>th</sup> edition, 1 January 2018, updates effective 1<sup>st</sup> January 2020
- The Jumping Rules and its Annexes, 26<sup>th</sup> edition, updates effective 1 January 2020
- <https://inside.fei.org/fei/regulations/jumping>
- CSI/CSIO Prize Money requirements 2020  
<https://inside.fei.org/sites/default/files/Final%20CSIs-CSIOs%20-%202020.pdf>
- Longines Rankings – Groups Categories 2020  
<https://inside.fei.org/sites/default/files/Final%20Longines%20Ranking%20Groups%20-%202020.pdf>
- Equine Anti-Doping and Controlled Medication Regulations (EADCMR), 2<sup>nd</sup> Edition, effective 1 January 2015, updates effective 1<sup>st</sup> January 2020
- FEI Anti-Doping Rules for Human Athletes (ADRHA), based upon 2015 WADA Code, effective 1 January 2015
- The FEI Policy for Enhanced Competition Safety during the Covid-19 Pandemic, effective as of 1 July 2020 and until further notice
- All subsequent published revisions/updates, the provisions of which will take precedence.

\*\*\*\*\*

**THE ANNEXE(S) IS/ARE PART OF THIS APPROVED AND SIGNED SCHEDULE AND MUST BE DISTRIBUTED TO ALL OFFICIALS AND NFs AND IS AVAILABLE TO OTHERS UPON REQUEST**

Approved by the FEI, Lausanne, on 08/09/2020. Updated on 18/09/2020, 22/09/2020, 24/09/2020.



Deborah Riplinger  
 Interim Jumping Director

**NB: No modifications to the approved Schedule will be accepted less than two weeks prior to the event. Additionally, no change may be made to a Longines Ranking competition once the schedule has been approved. Prizes in kind, to be accepted as prize money to count for Longines Ranking competitions and total event prize money, must be easily convertible into cash (GRs Art. 127).**

## TABLE OF CONTENTS

<b>I.</b>	<b>DENOMINATION OF THE EVENT .....</b>	<b>1</b>
<b>II.</b>	<b>GENERAL CONDITIONS .....</b>	<b>1</b>
<b>III.</b>	<b>THE FEI CODE OF CONDUCT FOR THE WELFARE OF THE HORSE .....</b>	<b>3</b>
<b>IV.</b>	<b>GENERAL INFORMATION .....</b>	<b>4</b>
1.	ORGANISER .....	4
2.	ORGANISING COMMITTEE .....	4
3.	EVENT DIRECTOR .....	4
4.	STABLE MANAGER.....	5
5.	ANNOUNCER .....	5
<b>V.</b>	<b>OFFICIALS .....</b>	<b>6</b>
<b>VI.</b>	<b>INVITATIONS .....</b>	<b>8</b>
1.	GENERAL.....	8
<b>VII.</b>	<b>ENTRIES .....</b>	<b>10</b>
1.	ENTRY DATES AND ENTRY FEES.....	10
2.	OTHER FEES .....	11
3.	NO-SHOWS/LATE WITHDRAWALS.....	12
<b>VIII.</b>	<b>TIMETABLE.....</b>	<b>13</b>
<b>IX.</b>	<b>COMPETITION DETAIL.....</b>	<b>15</b>
<b>X.</b>	<b>FACILITIES OFFERED.....</b>	<b>36</b>
1.	ATHLETES.....	36
2.	GROOMS.....	36
<b>XI.</b>	<b>LOGISTICAL/ADMINISTRATIVE/TECHNICAL INFORMATION .....</b>	<b>37</b>
1.	DRAW .....	37
2.	COMPETITION ARENA(S) .....	37
3.	PRACTICE ARENA(S) .....	37
4.	STABLES .....	37
5.	SAFETY CUPS.....	37
6.	TIMING DEVICE .....	37
7.	SCORING/TIMING PROVIDER.....	37
8.	OTHER TECHNOLOGY/SERVICE PROVIDER(S) .....	37
9.	PRIZE GIVING CEREMONY .....	38
10.	ADVERTISING ON ATHLETES AND HORSES.....	38
11.	TICKETING.....	38
12.	BETTING.....	38
13.	TRANSPORT REIMBURSEMENT HORSES / PONIES .....	38
14.	WELCOME.....	38
15.	LOCAL TRANSPORTATION - ARRANGEMENTS FROM HOTEL TO SHOWGROUNDS .....	38
16.	ENTRY RIGHT TO SHOWGROUNDS/ACCREDITED PERSONS.....	38
17.	SUSTAINABILITY.....	39
<b>XII.</b>	<b>VETERINARY MATTERS.....</b>	<b>40</b>
1.	CUSTOMS FORMALITIES .....	40
2.	HEALTH REQUIREMENTS .....	40
3.	NATIONAL REQUIREMENTS .....	40
4.	PONIES.....	41
5.	INJURY SURVEILLANCE.....	41
6.	TRANSPORT OF HORSES.....	41
7.	VENUE ARRIVAL INFORMATION & FITNESS TO COMPETE .....	41
8.	EQUINE ANTI-DOPING AND CONTROLLED MEDICATION PROGRAMME (EADCMP). FEI VETERINARY REGULATIONS,	

CHAPTER VII .....	42
<b>XIII. HUMAN ANTI-DOPING .....</b>	<b>43</b>
<b>XIV. ADDITIONAL INFORMATION .....</b>	<b>43</b>
1. THE FEI POLICY FOR ENHANCED COMPETITION SAFETY DURING THE COVID-19 PANDEMIC.....	43
2. INSURANCES AND NATIONAL REQUIREMENTS.....	44
3. PROTESTS/APPEALS.....	45
4. SCHOOLING DURING COMPETITIONS.....	45
5. STEWARDING.....	45
6. DISPUTES .....	46
7. MODIFICATION TO SCHEDULE .....	46
8. ADDITIONAL INFORMATION FROM THE OC.....	46
9. PRIZE MONEY DISTRIBUTION.....	48
10. MAXIMUM NUMBER OF STARTERS PER COMPETITION .....	49
11. GLOSSARY .....	50
<b>XV. ANNEXES.....</b>	<b>52</b>

### III. THE FEI CODE OF CONDUCT FOR THE WELFARE OF THE HORSE

The Fédération Equestre Internationale (FEI) expects all those involved in international equestrian sport to adhere to the FEI's Code of Conduct and to acknowledge and accept that at all times the welfare of the horse must be paramount and must never be subordinated to competitive or commercial influences.

1. At all stages during the preparation and training of competition horses, welfare must take precedence over all other demands. This includes good horse management, training methods, farriery and tack, and transportation.
2. Horses and Athletes must be fit, competent and in good health before they are allowed to compete. This encompasses medication use, surgical procedures that threaten welfare or safety, pregnancy in mares and the misuse of aids.
3. Events must not prejudice horse welfare. This involves paying careful attention to the competition areas, ground surfaces, weather conditions, stabling, site safety and fitness of the horse for onward travel after the event.
4. Every effort must be made to ensure that horses receive proper attention after they have competed and that they are treated humanely when their competition careers are over. This covers proper veterinary care, competition injuries, euthanasia and retirement.
5. The FEI urges all involved with the sport to attain the highest levels of education in their areas of expertise.

The Long version of this Code can be obtained from the Fédération Equestre Internationale, HM King Hussein I Building, Chemin de la Joliette 8, 1006 Lausanne, Switzerland. Telephone: +41 21 310 47 47. The Code is available in English. The Code is also available on the FEI's website: <http://inside.fei.org/>.

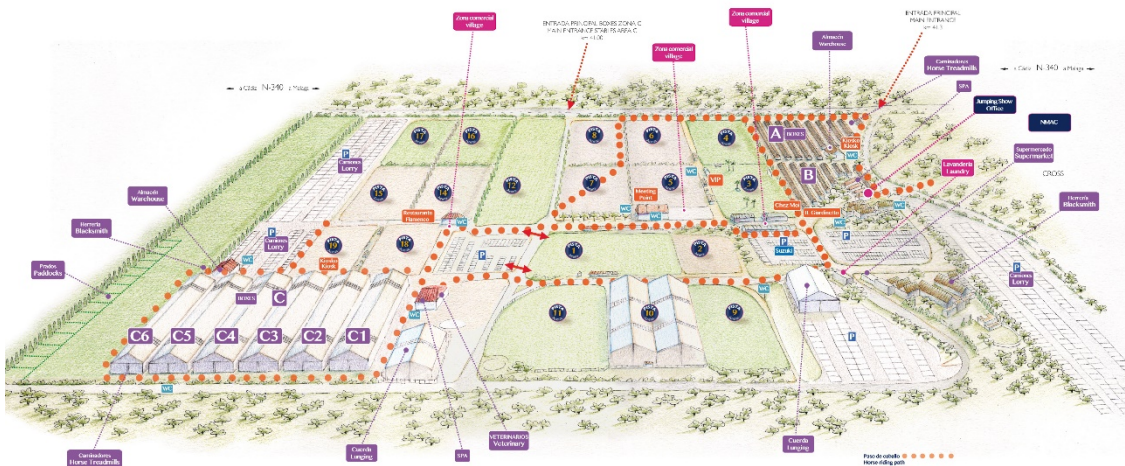
**IV. GENERAL INFORMATION**

**1. ORGANISER**

Name: CIRCUITO HÍPICO DEL SOL, S.L.  
 Address: Dehesa Montenmedio. Carretera Nacional 340, Km.41.3 11150 Vejer de la Frontera (Cádiz-Spain)  
 Telephone: +34 956 447 125 / +34 649 293 273  
 Fax:  
 Email: sunshinetour@sunshinetour.net  
 Website: www.sunshinetour.net

Contact Details Show Ground:

Address: Dehesa Montenmedio. Carretera Nacional 340, Km.41.3 11150 Vejer de la Frontera (Cádiz-Spain)  
 CODIGO DE EXPLOTACION O REGA: ES 110390000780  
 Telephone: +34 956 447 125 / +34 649 293 273  
 GPS Coordinates: Long 36.15 Lat -5.54 (Sunshine Tour)  
 Accessibility details (directions by road, nearest airport / train station):  
 The venue is situated between Km. 41 to 42.5 of National Road 340 (E-5):  
 - Main entrance for trucks and participants for stable Area A & B is at Km 41.4.



Nearest International Airports: Jerez de la Frontera (85 Km); Gibraltar (84 Km); Sevilla (160Km) & Málaga (195Km).

Nearest Train Station: San Fernando-Bahía Sur (49 Km).

**2. ORGANISING COMMITTEE**

Honorary President:  
 President of the Event: Mr. Antonio Blázquez Marín  
 Show Secretary: Mrs. Begoña Quirós  
 Press Officer: Mrs. Begoña Quirós

**3. EVENT DIRECTOR**

Name: Mrs. Teresa Blázquez Abascal  
 Address: Carretera Nacional 340, Km.41.3 11150 Vejer de la Frontera

(Cádiz-Spain)

Telephone: +34 956 447 125

Mobile: +34 649 293 273

Fax:

Email: [tblazquez@sunshinetour.net](mailto:tblazquez@sunshinetour.net)

**4. STABLE MANAGER**

Name: Mr. Juan Antonio Naveda Braza

Telephone: +34 956 447 125

Email: [sunshinetour@sunshinetour.net](mailto:sunshinetour@sunshinetour.net)

**5. ANNOUNCER**

Name: Sunshine Tour - Circuito Hípico del Sol

Email: [sunshinetour@sunshinetour.net](mailto:sunshinetour@sunshinetour.net)



## FEI APPROVED SCHEDULE

Vejer de la Frontera 30 September – 11 October 2020

### V. OFFICIALS

Please note that the schedule has been approved under the provision that all appointed Officials have successfully passed the on-line FEI Competency Evaluation Test.

Ref.	Panel	Function	FEI ID	Name	NF	Level	E-mail & Mobile
1	Ground Jury	Ground Jury President	10051502	Mr. Francisco Captivo (W 3)	POR	3*	fcaptivo@gmail.com +351967059559
		Ground Jury President	10077746	Mr. Manuel Carvalho Martins (W 4)	POR	3*	manuelcmartins13@gmail.com +351 934 823 050
		Ground Jury Member	10052326	Mr. Joaquin Medina García (W3+W4)	ESP	2*	joaquinmedinahipica@gmail.com
		Ground Jury Member	10067370	Mrs. Isabel López Mier (W 3)	ESP	1*	isamier@hotmail.com
		Ground Jury Member	10051502	Mr. Francisco Captivo (W 4)	POR	3*	fcaptivo@gmail.com
2	Foreign Judge	Foreign Judge	10077746	Mr. Manuel Carvalho Martins (W 3)	POR	3*	manuelcmartins13@gmail.com
			10049362	Mrs. Gloria Vinueza de la Cuesta (W 4)	ECU	3*	gloriavinueza@gmail.com
3		Foreign Technical Delegate					
4	Course Designer	Course Designer	10049471	Mr. Javier Trenor (W 3)	ESP	4*	chatrenor@hotmail.com +34 609 75 95 34
		Course Designer	10067890	Mr. Gregory Bodo (W 4)	FRA	4*	gregory.bodo@orange.fr +33 6 12 50 62 95
		Assistant Course Designer	10174763	Mr. Marcos Núñez García-Delgado (W3+W4)	ESP	2*	marcosngd@hotmail.com
		Assistant Course Designer	10049471	Mr. Javier Trenor (W 4)	ESP	4*	chatrenor@hotmail.com
		Assistant Course Designer		Mr. Luis Gonzalez Molina (W3+W4)	ESP	NAT	gonzalezmolinaluis@gmail.com
5	Chief Steward	Chief Steward	10094814	Mrs. Auxiliadora Carrión Lojo	ESP	2*	carrionauxi@gmail.com +34 607 920 322
6	Foreign Steward	Foreign Steward	10063151	Mrs. Cristina Miranda Alves	POR	2*	cristinamirandaalves@gmail.com
7	Assistants Stewards	Assistant Steward	10108053	Mrs. Mónica Llach Moreno	ESP	1*	segurocaballo@hotmail.es
		Assistant Steward	10108049	Mr. Javier Freire Lacave	ESP	1*	javi_cbc@hotmail.com
		Assistant Steward	10108048	Mrs. Sara de la Torre	ESP	1*	storredel1@gmail.com
		Assistant Steward	10106838	Mr. François Pfyffer	SUI	1*	slidingmotion@gmail.com
8	FEI Veterinary Delegate	FEI Veterinary Delegate	10095054	Mrs. Isabel Cienfuegos Marco	ESP		isabelcienfuegosm@hotmail.com +34 626 900 068
9	Veterinary Service Manager	Veterinary Service Manager	10177258	Mrs. María Aguirre Calderón	ESP		aguirrevet@hotmail.com +34 662 18 66 85
		FEI Permitted Treating	10177258	Mrs. María Aguirre Calderón	ESP		aguirrevet@hotmail.com

**FEI APPROVED SCHEDULE****Vejer de la Frontera 30 September – 11 October 2020**

---

	<b>/ Treating Veterinarian</b>	Veterinarian				
						+34 662 18 66 85
<b>10</b>	<b>Medical Doctor</b>	Medical Doctor		Ambulancias Barbate	ESP	+34 956 447 125
<b>11</b>	<b>Farrier</b>	Farrier		Mr. Julio Guisado Rawas	ESP	+34 666 430 800

## VI. INVITATIONS

### 1. GENERAL

Horses entered in one CSI star level may not enter another CSI star level at the same Event.

Horses may take part in national Competitions and international Competitions at the same Event only under the following conditions:

- Horses may take part in national Events up to two hours prior to the start of the international Event's Horse Inspection;
- If the national Event includes Competitions after the international Event ends, either on the same day or on the following day(s). Horses having taken part in the international Event may take part in national Competitions only, following the conclusion of the international Event.

**If an OC decides not to limit the number of Athletes, no limit can be set on the maximum number of horses and all entries will therefore automatically be accepted.**

#### **CSI3\*:**

Maximum number of Athletes to be invited: UNLIMITED

Maximum number of Horses that may be entered: UNLIMITED

Number of horses per athlete: **12 Horses max/rider (4 Max. Small/Medium/Big)** as follows:

*Small Class A (1.10m): 2 per rider*

*Small Class B (1.20-1.25m): 2 per rider*

*Medium Class A (1.30m): 2 per rider*

*Medium Class B (1.35m): 2 per rider*

*Big Class A (1.40m): 2 per rider*

*Big Class B (1.45-1.50m): 1 per rider*

Classes with heights max.1.30m are open for children 12-13 years old with the express permission of their NF (Art. 255 JRs).

Classes with heights max.1.40m are open for children 14-15 years old with the express permission of their NF (Art. 255 JRs).

#### **CSIYH\* (5,6 & 7 y/o):**

Maximum number of Athletes to be invited: UNLIMITED

Number of horses per athlete: **9 horses/rider (max.3 per age)**

Athletes are invited by the Organiser through their National Federation.

One (1) groom per athlete.

All riders should get in contact with the show office before the date of the definite entries.

Definite Entries 3rd Event: 21/09/2020

Definite Entries 4th Event: 28/09/2020

The number of stables is binding with the deposit payment.  
A prepayment of 100€/horse/week must be done to the following account:

Holder: CIRCUITO HÍPICO DEL SOL, S.L.

Bank : UNICAJA BANK

IBAN : ES27 2103 4020 0100 3000 7954

SWIFT Nº : UCJAES2MXXX

Bank address: Avenida de Andalucía, Nº 17

11150 Vejer de la Frontera

Cádiz – Spain

The OC reserve de right to give preference to the entries of riders who register for all 2 weeks.

## VII. ENTRIES

IMPORTANT

- Entries must be made by NFs through the FEI Entry System for all categories of this Event (<https://invitation.fei.org/login>);
- Additional documentation can be found at: <https://inside.fei.org/fei/your-role/it-services/fei-entry-system/fei-entry-system-jumping>;
- All Athletes and Horses participating in any International Competition must be registered with the FEI;
- Athletes and/or Horses present at the Event without having been entered through the FEI's Online Entry System will be automatically disqualified unless compelling circumstances warrant otherwise.

## 1. ENTRY DATES AND ENTRY FEES

Entries have to be in accordance with Art.251 of the FEI Jumping Rules, 26th edition, updates effective 1 January 2020

**Deadlines for Entries:**

Definite Entries:

<b>Definite Entries 3rd Event (30<sup>th</sup> Sep.-4<sup>th</sup> October)</b>	<b>21/09/2020</b>
<b>Definite Entries 4th Event (7<sup>th</sup> - 11<sup>th</sup> October)</b>	<b>28/09/2020</b>

Last date for substitutions:

**One day before of the vet check**

<b>Last date for substitutions 3rd Event (30<sup>th</sup> Sep.-4<sup>th</sup> October)</b>	<b>28/09/2020</b>
<b>Last date for substitutions 4th Event (7<sup>th</sup> - 11<sup>th</sup> October)</b>	<b>05/10/2020</b>

**Entry fee per horse (per category):**

**VAT excluded**

**Stabling included**

CSI3\*: 450€/event

CSIYH\*: 300€/event

Non-competing: 300€/event

**VAT (in %) :**

**21%**

Please refer to definition of Entry fees and Compulsory fees in the Glossary of the FEI Jumping Rules 26th edition, updates effective 1 January 2020, that is copied in Section XIV point 10.

**Compulsory fees per horse:**

- EADCMP Fee:
 

Included in entry fee <input type="checkbox"/>
Not included in entry fee <input checked="" type="checkbox"/>
Lower Level Events (CIMs) CHF 18 per horse per event
Higher Level Events CHF 25 per horse per event

 (For definition of CIMs see Appendix E of the FEI General Regulations, all other events not defined as CIMs)

- Fee for manure disposal (at OC discretion; maximum € 40 per horse per Event).  
40€ Per horse
- Fee for health/customs-related documents for Horses, if applicable (only if requested) 35€ Per horse

**All aforementioned amounts are including VAT**

**Total maximum fee per horse:**

**75€ + 18 CHF (Lower Events) or 25 CHF (Higher Events)**

**Compulsory fees per athlete:**

- NF fee if applicable Per athlete
- NF medication control programme fee if applicable Per athlete
- Fee for lorry parking if applicable 80€/week Per  
lorry/caravan
- Fee for electric hook-up for lorry 60€/week since arrival  
Per lorry/caravan

**All aforementioned amounts are including VAT**

**Total maximum fee per Athlete:**  
**number of lorries**

**Depending on**

**2. OTHER FEES**

All other fees must optional fees and be listed hereunder with the details of the amounts to be charged and approved by the FEI. Only fees approved by the FEI and listed in the approved Schedule can be charged by the OC. *Please specify if price per bale or other quantity.*

- Hay: 9.90€ per bale
- Straw: 6.60€ per bale (first bedding free)
- Shavings: 11.07 per bale / National - 12.34€ per bale / Imported
- Other (please specify):
  - Tack room (permanent stables): 80€/week  
Only limited number available in permanent stables
  - Fee for parking Trailer, if requested 40 €/ week
  - Fee for electric hook-up for Trailer, if requested 20 €/ week
  - Large stable (only with certificate) 60.50 € per stable
  - Unloading feed: 60.50€/pallet (max.242€)

THE OC WILL NOT ACCEPT THE DELIVERY OF HAY, SHAVINGS AND STRAW BY OTHERS SUPPLIERS ON THE SHOW GROUND! FOR ANY ILLEGAL DELIVERY WE WILL CHARGE THE ATHLETE 1.000€.

**All aforementioned amounts are including VAT**

VAT number of the organiser: ES B41819673

The payments done by credit card American Express will have an additional surcharge of 3.00%.

All riders accounts must be closed before departure.

Payments must be done by credit card or bank transfer one week before leaving the facilities.

**3. NO-SHOWS/LATE WITHDRAWALS**

**NB:** In the case of withdrawals after the date of definite entries or no-shows the athlete or the respective NF will be held liable to reimburse the OC for the actual financial loss incurred by the OC (i.e. stabling and hotel expenses) as a result of the late withdrawal or no-show.

**Amount charged: 100% of the total entry fee per horse.**

**IMPORTANT:**

- All horses not staying for Competition IV: CSI3\* - CSIYH\* 4th week: 7th - 11th October have to leave the facilities on Monday 05.10.2020 before 9.00 a.m.

## VIII. TIMETABLE

**Competitions must not start before 08:00 and must not finish after 23:00, unless prior approval is granted by the FEI.**

**As per Jumping Rules Annex VI: combined competitions are not permitted.**

*The scheduling of competitions must take into account mandatory maintenance breaks as follows. In principle, there should be one maintenance break for every 40 starters; at a minimum, it is compulsory to include one maintenance break in competitions with 50-99 starters after half of the starters have competed. Competitions with 100 starters or more must have three maintenance breaks. The start list must indicate when the maintenance break will take place (e.g. after N° 25).*

(to be provided per category/level if multiple events)

	Day	Date	Time
• Opening of stables Competition III	Monday (3 <sup>rd</sup> Week)	28/09/2020	12:00
• Opening of stables Competition IV	Monday (4 <sup>th</sup> Week)	05/10/2020	12:00
• Horse Inspection <i>All horses taking part at this Event must be present during the first horse inspection, unless unable to do so due to "force majeure"</i>	Tuesday (3 <sup>rd</sup> Week)	29/09/2020	09:00
	Tuesday (4 <sup>th</sup> Week)	06/10/2020	09:00
• Horse Re-Inspection	Wednesday (3 <sup>rd</sup> Week)	30/09/2020	08:30
	Wednesday (4 <sup>th</sup> Week)	07/10/2020	08:30
• Opening times of exercise areas	Daily		09:00-17:00

**COMPETITION III: CSI3\*/CSIYH\***  
**3<sup>rd</sup> Week: 30<sup>th</sup> September – 4<sup>th</sup> October**

No.	CLASSES	DATE		ART	Type	HEIGHT	PRIZE MONEY CSIYH*	PRIZE MONEY CSI3*
1	5 Y/O	Wednesday	30/09/2020	238.1.1	FnoT	1,15	500,00 €	
2	6 Y/O	Wednesday	30/09/2020	238.1.1	FnoT	1,25	700,00 €	
3	7 Y/O	Wednesday	30/09/2020	274.2.5	2Ph sp	1,35	900,00 €	
4	5 Y/O	Thursday	01/10/2020	274.2.5	2Ph sp	1,15	500,00 €	
5	6 Y/O	Thursday	01/10/2020	274.2.5.	2Ph sp	1,25	700,00 €	
6	7 Y/O	Thursday	01/10/2020	238.2.1	FT	1,35	900,00 €	
7	1,30	Thursday	01/10/2020	238.2.1	FT	1,30		1.000,00 €
8	1,35	Thursday	01/10/2020	238.2.1	FT	1,35		2.000,00 €
9	1,45	Thursday	01/10/2020	238.2.1	FT	1,45		<b>25.400,00 €</b>
10	5 Y/O	Friday	02/10/2020	274.2.5	2Ph sp	1,15	700,00 €	
11	6 Y/O	Friday	02/10/2020	238.2.1	FT	1,25	900,00 €	
12	7 Y/O	Friday	02/10/2020	238.2.1	FT	1,35	1.100,00 €	
13	1,10	Friday	02/10/2020	238.2.1	FT	1,10		400,00 €
14	1,20	Friday	02/10/2020	238.2.1	FT	1,20		500,00 €
15	1,30	Friday	02/10/2020	274.2.5	2Ph sp	1,30		1.000,00 €
16	1,40	Friday	02/10/2020	238.2.1	FT	1,40		3.000,00 €
17	1,45	Friday	02/10/2020	283.2.1	FT	1,45		<b>25.400,00 €</b>



# FEI APPROVED SCHEDULE



Vejer de la Frontera 30 September – 11 October 2020

18	1,10	Saturday	03/10/2020	238.2.1	FT	1,10		400,00 €
19	1,20	Saturday	03/10/2020	269	ACC	1,20		500,00 €
20	1,30	Saturday	03/10/2020	238.2.1	FT	1,30		1.000,00 €
21	1,35	Saturday	03/10/2020	274.2.5	2Ph sp	1,35		2.000,00 €
22	1,40	Saturday	03/10/2020	238.2.2	JO	1,40		4.000,00 €
23	1,10	Sunday	04/10/2020	238.2.1	FT	1,10		400,00 €
24	1,25	Sunday	04/10/2020	238.2.1	FT	1,25		500,00 €
25	1,35	Sunday	04/10/2020	274.2.5	2Ph sp	1,35		2.000,00 €
26	1,40	Sunday	04/10/2020	238.2.1	FT	1,40		3.000,00 €
27	1,50	Sunday	04/10/2020	238.2.2	JO	1,50		<b>54.200,00 €</b>

Total CSI3\*: 126.700€

Total CSIYH\*: 6.900€

Overall Prize Money: 133.600€

## COMPETITION IV: CSI3\*/CSIYH\* 4<sup>th</sup> Week: 7<sup>th</sup> – 11<sup>th</sup> October

No.	CLASSES	DATE		ART	Type	HEIGHT	PRIZE MONEY CSIYH*	PRIZE MONEY CSI3*
28	5 Y/O	Wednesday	07/10/2020	238.1.1	FnoT	1,15	500,00 €	
29	6 Y/O	Wednesday	07/10/2020	238.1.1	FnoT	1,25	700,00 €	
30	7 Y/O	Wednesday	07/10/2020	274.2.5	2Ph sp	1,35	900,00 €	
31	5 Y/O	Thursday	08/10/2020	274.2.5	2Ph sp	1,15	500,00 €	
32	6 Y/O	Thursday	08/10/2020	274.2.5	2Ph sp	1,25	700,00 €	
33	7 Y/O	Thursday	08/10/2020	238.2.1	FT	1,35	900,00 €	
34	1,30	Thursday	08/10/2020	238.2.1	FT	1,30		1.000,00 €
35	1,35	Thursday	08/10/2020	238.2.1	FT	1,35		2.000,00 €
36	1,45	Thursday	08/10/2020	238.2.1	FT	1,45		<b>25.400,00 €</b>
37	5 Y/O	Friday	09/10/2020	274.2.5	2Ph sp	1,15	700,00 €	
38	6 Y/O	Friday	09/10/2020	238.2.1	FT	1,25	900,00 €	
39	7 Y/O	Friday	09/10/2020	238.2.1	FT	1,35	1.100,00 €	
40	1,10	Friday	09/10/2020	238.2.1	FT	1,10		400,00 €
41	1,20	Friday	09/10/2020	238.2.1	FT	1,20		500,00 €
42	1,30	Friday	09/10/2020	274.2.5	2Ph sp	1,30		1.000,00 €
43	1,40	Friday	09/10/2020	238.2.1	FT	1,40		3.000,00 €
44	1,45	Friday	09/10/2020	283.2.1	FT	1,45		<b>25.400,00 €</b>
45	1,10	Saturday	10/10/2020	238.2.1	FT	1,10		400,00 €
46	1,20	Saturday	10/10/2020	269	ACC	1,20		500,00 €
47	1,30	Saturday	10/10/2020	238.2.1	FT	1,30		1.000,00 €
48	1,35	Saturday	10/10/2020	274.2.5	2Ph sp	1,35		2.000,00 €
49	1,40	Saturday	10/10/2020	238.2.2	JO	1,40		4.000,00 €
50	1,10	Sunday	11/10/2020	238.2.1	FT	1,10		400,00 €
51	1,25	Sunday	11/10/2020	238.2.1	FT	1,25		500,00 €

52	1,35	Sunday	11/10/2020	274.2.5	2Ph sp	1,35		2.000,00 €
53	1,40	Sunday	11/10/2020	238.2.1	FT	1,40		3.000,00 €
54	1,50	Sunday	11/10/2020	238.2.2	JO	1,50		<b>54.200,00 €</b>

**Total CSI3\*: 126.700€**

**Total CSIYH\*: 6.900€**

**Overall Prize Money: 133.600€**

**Applicable government tax to be deducted from Prize Money (see also XIV.8):**

According to the Spanish Law concerning Physical Person Return Tax (I.R.P.F), the OC must deduct the rate fixed by the above-mentioned law over all the sums paid to the competitors. This rate differs according to the athletes nationality. It depends on the international agreements established by Spain with the different European countries. Currently, the tax rate (I.R.P.F) for Foreign Competitors is 24%.

All riders may ask for further information to:

MINISTERIO DE ECONOMIA Y HACIENDA  
Delegación de Hacienda de Madrid  
c/ Guzman El Bueno, 73  
28015 MADRID (ESPAÑA)

Prize money is including 21% VAT.%

**GENERAL CLASSIFICATION AT THE END OF THE COMPETITIONS:**

Leading athlete award –	(Prize description and value)
Best foreign athlete -	(Prize description and value)
Best home athlete –	(Prize description and value)
Team awards –	(Prize description and value)

**IX. COMPETITION DETAIL**

**COMPETITION III: CSI3\*/CSIYH\***  
**3<sup>rd</sup> Week: 30<sup>th</sup> September – 4<sup>th</sup> October**

The timetable will be announced the day before each competition.

**FIRST DAY: WEDNESDAY**

**DATE (dd/mm/yy): 30/09/2020**

**COMPETITION No: 1**

Type of Competition: Table A not against the clock

Acc. to Article: 238.1.1

Competition description: **CSIYH\* FIVE YEARS OLD HORSES**

Jump-off (if any)	None
Speed/Fixed time	350m/min
Height of obstacles:	1.15m

Vejer de la Frontera 30 September – 11 October 2020

Number of horses per athlete 3  
 Number of Starters: 100\* (if more than 100 take part then please refer to  
 Section XIV point 9)  
 Total prize money: 500€  
 Chart to be used: 1 (25% to winner)   
 2 (33% to winner)   
 Please specify prize money amount for each athlete placed 13<sup>th</sup> and beyond: 5€

\* \* \* \* \*

**COMPETITION No: 2**

Type of Competition: Table A not against the clock  
 Acc. to Article: 238.1.1  
 Competition description: **CSIYH\* SIX YEARS OLD HORSES**

Jump-off (if any) None  
 Speed/Fixed time 350m/min  
 Height of obstacles: 1.25m  
 Number of horses per athlete 3  
 Number of Starters: 100\* (if more than 100 take part then please refer to  
 Section XIV point 9)  
 Total prize money: 700€  
 Chart to be used: 1 (25% to winner)   
 2 (33% to winner)   
 Please specify prize money amount for each athlete placed 13<sup>th</sup> and beyond: 7€

\* \* \* \* \*

**COMPETITION No: 3**

Type of Competition: 2 Phases Special  
 Acc. to Article: 274.2.5  
 Competition description: **CSIYH\* SEVEN YEARS OLD HORSES**

Jump-off (if any) None  
 Speed/Fixed time 350m/min  
 Height of obstacles: 1.35m  
 Number of horses per athlete 3  
 Number of Starters: 100\* (if more than 100 take part then please refer to  
 Section XIV point 9)  
 Total prize money: 900€  
 Chart to be used: 1 (25% to winner)   
 2 (33% to winner)   
 Please specify prize money amount for each athlete placed 13<sup>th</sup> and beyond: 9€

\* \* \* \* \*

**SECOND DAY: THURSDAY** **DATE (dd/mm/yy): 01/10/2020**

**COMPETITION No: 4**

Type of Competition: 2 Phases Special  
 Acc. to Article: 274.2.5  
 Competition description: **CSIYH\* FIVE YEARS OLD HORSES**

Jump-off (if any) None  
 Speed/Fixed time 350m/min  
 Height of obstacles: 1.15m  
 Number of horses per athlete 3

Vejer de la Frontera 30 September – 11 October 2020

Number of Starters: 100\* (if more than 100 take part then please refer to Section XIV point 9)  
 Total prize money: 500€  
 Chart to be used: 1 (25% to winner)   
 2 (33% to winner)   
 Please specify prize money amount for each athlete placed 13<sup>th</sup> and beyond: 5€

\* \* \* \* \*

**COMPETITION No: 5**

Type of Competition: 2 Phases Special  
 Acc. to Article: 274.2.5  
 Competition description: **CSIYH\* SIX YEARS OLD HORSES**

Jump-off (if any) None  
 Speed/Fixed time 350m/min  
 Height of obstacles: 1.25m  
 Number of horses per athlete 3  
 Number of Starters: 100\* (if more than 100 take part then please refer to Section XIV point 9)  
 Total prize money: 700€  
 Chart to be used: 1 (25% to winner)   
 2 (33% to winner)   
 Please specify prize money amount for each athlete placed 13<sup>th</sup> and beyond: 7€

\* \* \* \* \*

**COMPETITION No: 6**

Type of Competition: Table A against the clock  
 Acc. to Article: 238.2.1  
 Competition description: **CSIYH\* SEVEN YEARS OLD HORSES**

Jump-off (if any) None  
 Speed/Fixed time 350m/min  
 Height of obstacles: 1.35m  
 Number of horses per athlete 3  
 Number of Starters: 100\* (if more than 100 take part then please refer to Section XIV point 9)  
 Total prize money: 900€  
 Chart to be used: 1 (25% to winner)   
 2 (33% to winner)   
 Please specify prize money amount for each athlete placed 13<sup>th</sup> and beyond: 9€

\* \* \* \* \*

**COMPETITION No: 7**

Type of Competition: Table A against the clock  
 Acc. to Article: 238.2.1  
 Competition description: **CSI3\* MEDIUM CLASS A**

Jump-off (if any) None  
 Speed/Fixed time 350m/min  
 Height of obstacles: 1.30 m  
 Number of horses per athlete 2  
 Number of Starters: 100\* (if more than 100 take part then please refer to Section XIV point 9)  
 Total prize money: 1.000€

**Vejer de la Frontera 30 September – 11 October 2020**

---

Chart to be used: 1 (25% to winner)  **x**  
 2 (33% to winner)   
 Please specify prize money amount for each athlete placed 13<sup>th</sup> and beyond: 10€

\* \* \* \* \*

**COMPETITION No: 8**

Type of Competition: Table A against the clock  
 Acc. to Article: 238.2.1  
 Competition description: **CSI3\* MEDIUM CLASS B**

Jump-off (if any) None  
 Speed/Fixed time 350m/min  
 Height of obstacles: 1.35 m  
 Number of horses per athlete 2  
 Number of Starters: 100\* (if more than 100 take part then please refer to Section XIV point 9)  
 Total prize money: 2.000€  
 Chart to be used: 1 (25% to winner)  **x**  
 2 (33% to winner)   
 Please specify prize money amount for each athlete placed 13<sup>th</sup> and beyond: 20€

\* \* \* \* \*

**COMPETITION No: 9 (QUALIFIER FOR CLASS 17 & 27)**

Type of Competition: Table A against the clock  
 Acc. to Article: 238.2.1  
 Competition description: **CSI3\* BIG CLASS B**

**This class counts for the Longines Ranking Group D (LR 1)**

**The best 100 riders will qualify for the Big Class B Class 17 (1.45m-Friday)**  
**The best 30 placed riders qualify for the Big Class GP Class 27 (1.50m-Sunday)**

**Should the overall number of riders be equal to/less than 100 no qualification system will be applied.**

Jump-off (if any) None  
 Speed/Fixed time 375m/min  
 Height of obstacles: 1.45m  
 Number of horses per athlete 1  
 Number of Starters: 100\* (if more than 100 take part then please refer to Section XIV point 9)  
 Total prize money: 25.400€  
 Chart to be used: 1 (25% to winner)  **x**  
 2 (33% to winner)   
 Please specify prize money amount for each athlete placed 13<sup>th</sup> and beyond: 125€

\* \* \* \* \*

**THIRD DAY: FRIDAY**

**DATE (dd/mm/yy): 02/10/2020**

**COMPETITION No: 10**

Type of Competition: 2 Phases Special  
 Acc. to Article: 274.2.5

**Vejer de la Frontera 30 September – 11 October 2020**

---

Competition description: **CSIYH\* FIVE YEARS OLD HORSES**

Jump-off (if any)	None
Speed/Fixed time	350m/min
Height of obstacles:	1.15m
Number of horses per athlete	3
Number of Starters:	100* (if more than 100 take part then please refer to
Section XIV point 9)	
Total prize money:	700€
Chart to be used:	1 (25% to winner) <input checked="" type="checkbox"/>
	2 (33% to winner) <input type="checkbox"/>

Please specify prize money amount for each athlete placed 13<sup>th</sup> and beyond: 7€

\* \* \* \* \*

**COMPETITION No: 11**

Type of Competition: Table A against the clock

Acc. to Article: 238.2.1

Competition description: **CSIYH\* SIX YEARS OLD HORSES**

Jump-off (if any)	None
Speed/Fixed time	350m/min
Height of obstacles:	1.25m
Number of horses per athlete	3
Number of Starters:	100* (if more than 100 take part then please refer to
Section XIV point 9)	
Total prize money:	900€
Chart to be used:	1 (25% to winner) <input checked="" type="checkbox"/>
	2 (33% to winner) <input type="checkbox"/>

Please specify prize money amount for each athlete placed 13<sup>th</sup> and beyond: 9€

\* \* \* \* \*

**COMPETITION No: 12**

Type of Competition: Table A against the clock

Acc. to Article: 238.2.1

Competition description: **CSIYH\* SEVEN YEARS OLD HORSES**

Jump-off (if any)	None
Speed/Fixed time	350m/min
Height of obstacles:	1.35m
Number of horses per athlete	3
Number of Starters:	100* (if more than 100 take part then please refer to
Section XIV point 9)	
Total prize money:	1.100€
Chart to be used:	1 (25% to winner) <input checked="" type="checkbox"/>
	2 (33% to winner) <input type="checkbox"/>

Please specify prize money amount for each athlete placed 13<sup>th</sup> and beyond: 11€

\* \* \* \* \*

**COMPETITION No: 13**

Type of Competition: Table A against the clock

Acc. to Article: 238.2.1

Competition description: **CSI3\* SMALL CLASS A**

Jump-off (if any)	None
-------------------	------

**FEI APPROVED SCHEDULE**

**Vejer de la Frontera 30 September – 11 October 2020**

Speed/Fixed time 350m/min  
 Height of obstacles: 1.10m  
 Number of horses per athlete 2  
 Number of Starters: 100\* (if more than 100 take part then please refer to Section XIV point 9)  
 Total prize money: 400€  
 Chart to be used: 1 (25% to winner)   
 2 (33% to winner)   
 Please specify prize money amount for each athlete placed 13<sup>th</sup> and beyond: 4€

\* \* \* \* \*

**COMPETITION No: 14**

Type of Competition: Table A against the clock  
 Acc. to Article: 238.2.1  
 Competition description: **CSI3\* SMALL CLASS B**

Jump-off (if any) None  
 Speed/Fixed time 350m/min  
 Height of obstacles: 1.20m  
 Number of horses per athlete 2  
 Number of Starters: 100\* (if more than 100 take part then please refer to Section XIV point 9)  
 Total prize money: 500€  
 Chart to be used: 1 (25% to winner)   
 2 (33% to winner)   
 Please specify prize money amount for each athlete placed 13<sup>th</sup> and beyond: 5€

\* \* \* \* \*

**COMPETITION No: 15**

Type of Competition: 2 Phases Special  
 Acc. to Article: 274.2.5  
 Competition description: **CSI3\* MEDIUM CLASS A**

Jump-off (if any) None  
 Speed/Fixed time 350m/min  
 Height of obstacles: 1.30m  
 Number of horses per athlete 2  
 Number of Starters: 100\* (if more than 100 take part then please refer to Section XIV point 9)  
 Total prize money: 1.000€  
 Chart to be used: 1 (25% to winner)   
 2 (33% to winner)   
 Please specify prize money amount for each athlete placed 13<sup>th</sup> and beyond: 10€

\* \* \* \* \*

**COMPETITION No: 16**

Type of Competition: Table A against the clock  
 Acc. to Article: 238.2.1  
 Competition description: **CSI3\* BIG CLASS A**

Jump-off (if any) None  
 Speed/Fixed time 375m/min  
 Height of obstacles: 1.40m  
 Number of horses per athlete 2

Vejer de la Frontera 30 September – 11 October 2020

Number of Starters: 100\* (if more than 100 take part then please refer to  
 Section XIV point 9)  
 Total prize money: 3.000€  
 Chart to be used: 1 (25% to winner)   
 2 (33% to winner)   
 Please specify prize money amount for each athlete placed 13<sup>th</sup> and beyond: 30€

\* \* \* \* \*

**COMPETITION No: 17 (QUALIFIER FOR CLASS 27)**

Type of Competition: Table A against the clock  
 Acc. to Article: 238.2.1  
 Competition description: **CSI3\* BIG CLASS B**

**This class counts for the Longines Ranking Group D (LR 2)**

**Open to the best 100 placed riders of class 9 Big Class B (1.45m-Thursday)**  
**The best 30 placed riders qualify for the Big Class GP Class 27 (1.50m-Sunday)**

**If a qualified rider does not start or is already qualified, he will be replaced by the next rider up until 4 hours prior to the competition.**

**Should the overall number of riders be equal to/less than 100 no qualification system will be applied.**

Jump-off (if any) None  
 Speed/Fixed time 375m/min  
 Height of obstacles: 1.45m  
 Number of horses per athlete 1  
 Number of Starters: 100  
 Total prize money: 25.400€  
 Chart to be used: 1 (25% to winner)   
 2 (33% to winner)   
 Please specify prize money amount for each athlete placed 13<sup>th</sup> and beyond: 125€

\* \* \* \* \*

**FOURTH DAY: SATURDAY** **DATE (dd/mm/yy): 03/10/2020**

**COMPETITION No: 18**

Type of Competition: Table A against the clock  
 Acc. to Article: 238.2.1  
 Competition description: **CSI3\* SMALL CLASS A**

Jump-off (if any) None  
 Speed/Fixed time 350m/min  
 Height of obstacles: 1.10m  
 Number of horses per athlete 2  
 Number of Starters: 100\* (if more than 100 take part then please refer to  
 Section XIV point 9)  
 Total prize money: 400€  
 Chart to be used: 1 (25% to winner)   
 2 (33% to winner)   
 Please specify prize money amount for each athlete placed 13<sup>th</sup> and beyond: 4€



\* \* \* \* \*

**COMPETITION No: 19**

Type of Competition: Accumulator

Acc. to Article: 269.1,2,3,5

Competition description: **CSI3\* SMALL CLASS B**

Jump-off (if any)	None	
Speed/Fixed time	350m/min	
Height of obstacles:	1.20m	
Number of horses per athlete	2	
Number of Starters:	100*	(if more than 100 take part then please refer to Section XIV point 9)
Total prize money:	500€	
Chart to be used:	1 (25% to winner)	<input checked="" type="checkbox"/>
	2 (33% to winner)	<input type="checkbox"/>

Please specify prize money amount for each athlete placed 13<sup>th</sup> and beyond: 5€

\* \* \* \* \*

**COMPETITION No: 20**

Type of Competition: Table A against the clock

Acc. to Article: 238.2.1

Competition description: **CSI3\* MEDIUM CLASS A**

Jump-off (if any)	None	
Speed/Fixed time	350m/min	
Height of obstacles:	1.30m	
Number of horses per athlete	2	
Number of Starters:	100*	(if more than 100 take part then please refer to Section XIV point 9)
Total prize money:	1.000€	
Chart to be used:	1 (25% to winner)	<input checked="" type="checkbox"/>
	2 (33% to winner)	<input type="checkbox"/>

Please specify prize money amount for each athlete placed 13<sup>th</sup> and beyond: 10€

\* \* \* \* \*

**COMPETITION No: 21**

Type of Competition: 2 Phases Special

Acc. to Article: 274.2.5

Competition description: **CSI3\* MEDIUM CLASS B**

Jump-off (if any)	None	
Speed/Fixed time	350m/min	
Height of obstacles:	1.35m	
Number of horses per athlete	2	
Number of Starters:	100*	(if more than 100 take part then please refer to Section XIV point 9)
Total prize money:	2.000€	
Chart to be used:	1 (25% to winner)	<input checked="" type="checkbox"/>
	2 (33% to winner)	<input type="checkbox"/>

Please specify prize money amount for each athlete placed 13<sup>th</sup> and beyond: 20€

\* \* \* \* \*

**COMPETITION No: 22**

Type of Competition: Table A against the clock with Jump Off

Acc. to Article: 238.2.2

Competition description: **CSI3\* BIG CLASS A**

Jump-off (if any)	One
Speed/Fixed time	375m/min
Height of obstacles:	1.40m
Number of horses per athlete	2
Number of Starters:	100* (if more than 100 take part then please refer to
Section XIV point 9)	
Total prize money:	4.000€
Chart to be used:	1 (25% to winner) <input checked="" type="checkbox"/>
	2 (33% to winner) <input type="checkbox"/>

Please specify prize money amount for each athlete placed 13<sup>th</sup> and beyond: 40€

\* \* \* \* \*

**FOURTH DAY: SUNDAY**

**DATE (dd/mm/yy): 04/10/2020**

**COMPETITION No: 23**

Type of Competition: Table A against the clock

Acc. to Article: 238.2.1

Competition description: **CSI3\* SMALL CLASS A**

Jump-off (if any)	None
Speed/Fixed time	350m/min
Height of obstacles:	1.10m
Number of horses per athlete	2
Number of Starters:	100* (if more than 100 take part then please refer to
Section XIV point 9)	
Total prize money:	400€
Chart to be used:	1 (25% to winner) <input checked="" type="checkbox"/>
	2 (33% to winner) <input type="checkbox"/>

Please specify prize money amount for each athlete placed 13<sup>th</sup> and beyond: 4€

\* \* \* \* \*

**COMPETITION No: 24**

Type of Competition: Table A against the clock

Acc. to Article: 238.2.1

Competition description: **CSI3\* SMALL CLASS B**

Jump-off (if any)	None
Speed/Fixed time	350m/min
Height of obstacles:	1.25m
Number of horses per athlete	2
Number of Starters:	100* (if more than 100 take part then please refer to
Section XIV point 9)	
Total prize money:	500€
Chart to be used:	1 (25% to winner) <input checked="" type="checkbox"/>
	2 (33% to winner) <input type="checkbox"/>

Please specify prize money amount for each athlete placed 13<sup>th</sup> and beyond: 5€

\* \* \* \* \*

**COMPETITION No: 25**

Type of Competition: 2 Phases Special  
 Acc. to Article: 274.2.5  
 Competition description: **CSI3\* MEDIUM CLASS B**

Jump-off (if any)	None	
Speed/Fixed time	350m/min	
Height of obstacles:	1.35m	
Number of horses per athlete	2	
Number of Starters:	100*	(if more than 100 take part then please refer to Section XIV point 9)
Total prize money:	2.000€	
Chart to be used:	1 (25% to winner)	<input checked="" type="checkbox"/>
	2 (33% to winner)	<input type="checkbox"/>

Please specify prize money amount for each athlete placed 13<sup>th</sup> and beyond: 20€

\* \* \* \* \*

**COMPETITION No: 26**

Type of Competition: Table A against the clock  
 Acc. to Article: 238.2.1  
 Competition description: **CSI3\* BIG CLASS A**

Jump-off (if any)	None	
Speed/Fixed time	375m/min	
Height of obstacles:	1.40m	
Number of horses per athlete	2	
Number of Starters:	100*	(if more than 100 take part then please refer to Section XIV point 9)
Total prize money:	3.000€	
Chart to be used:	1 (25% to winner)	<input checked="" type="checkbox"/>
	2 (33% to winner)	<input type="checkbox"/>

Please specify prize money amount for each athlete placed 13<sup>th</sup> and beyond: 30€

\* \* \* \* \*

**COMPETITION No: 27**

Type of Competition: Table A against the clock with Jump Off  
 Acc. to Article: 238.2.2 + FEI Olympic Regulations Art. 632.6.1  
 Competition description: **CSI3\* BIG CLASS GP**

*This competition will count as a competition where athletes and horses, as a combination, can achieve the Minimum Eligibility Requirements (MER) or the Confirmation Result for the Tokyo Olympic Games in 2021 providing the course meets the following specifications: consist of at least 12 obstacles which may vary in height between 1.40m and 1.60m. The spread obstacles must have spreads of between 1.50m to 2.00m (2.20m for the triple bar). At least two straight obstacles must be provided with a minimum height of 1.60m.*

*The Foreign Judge is responsible for ensuring that the course is built to the required dimensions and must confirm to the FEI through the Foreign Judge Report whether or not the course requirements have been met and must upload/sent the course plan including all heights and dimensions.*

**This class counts for the Longines Ranking Group C (LR 3)**

**Open to the best 30 placed riders of class 9 Big Class B (1.45m-Thursdays) and the best placed riders of class 17 Big Class B (1.45m-Friday) until the number of 60 starters is reached including prequalified riders.**

**Vejer de la Frontera 30 September – 11 October 2020**

---

The following Athletes (not Athlete/Horse combinations) are automatically qualified for the Grand Prix at CSI Events, if present:

- 4.2.1. The winner of that Event's Grand Prix the previous year;
- 4.2.2. The current National Jumping Champion of the host country;
- 4.2.3. The individual Jumping medal winners of the last Olympic and Pan-American Games, the last World and Continental Championships and the winner of the last FEI World Cup™ Jumping Final.

All athletes qualified for the Grand Prix, including those automatically qualified must complete, with their Grand Prix horse, the initial round of at least one FEI competition prior to the Grand Prix.

**If a qualified rider does not start or is already qualified, he will be replaced by the next rider up until 4 hours prior to the competition.**

*Art. 254.6. If there are 30 starters or less, each Athlete may ride two Horses.*

Jump-off (if any)	One
Speed/Fixed time	375m/min
Height of obstacles:	1.50m
Number of horses per athlete	1
Number of Starters:	60
Total prize money:	54.200€
Chart to be used:	1 (25% to winner) <input checked="" type="checkbox"/>
	2 (33% to winner) <input type="checkbox"/>

Please specify prize money amount for each athlete placed 13<sup>th</sup> and beyond: 250€

\* \* \* \* \*

**COMPETITION IV: CSI3\*/CSIYH\***  
**4<sup>th</sup> Week: 7<sup>th</sup> – 11<sup>th</sup> October**

**The timetable will be announced the day before each competition.**

**FIRST DAY: WEDNESDAY DATE (dd/mm/yy): 07/10/2020**

**COMPETITION No: 28**

Type of Competition: Table A not against the clock

Acc. to Article: 238.1.1

Competition description: **CSIYH\* FIVE YEARS OLD HORSES**

Jump-off (if any)	None
Speed/Fixed time	350m/min
Height of obstacles:	1.15m
Number of horses per athlete	3
Number of Starters:	100* (if more than 100 take part then please refer to
Section XIV point 9)	
Total prize money:	500€
Chart to be used:	1 (25% to winner) <input checked="" type="checkbox"/>
	2 (33% to winner) <input type="checkbox"/>

Please specify prize money amount for each athlete placed 13<sup>th</sup> and beyond: 5€

\* \* \* \* \*

**COMPETITION No: 29**

Type of Competition: Table A not against the clock  
Acc. to Article: 238.1.1  
Competition description: **CSIYH\* SIX YEARS OLD HORSES**

Jump-off (if any)	None
Speed/Fixed time	350m/min
Height of obstacles:	1.25m
Number of horses per athlete	3
Number of Starters:	100* (if more than 100 take part then please refer to
Section XIV point 9)	
Total prize money:	700€
Chart to be used:	1 (25% to winner) <input checked="" type="checkbox"/>
	2 (33% to winner) <input type="checkbox"/>

Please specify prize money amount for each athlete placed 13<sup>th</sup> and beyond: 7€

\* \* \* \* \*

**COMPETITION No: 30**

Type of Competition: 2 Phases Special  
Acc. to Article: 274.2.5  
Competition description: **CSIYH\* SEVEN YEARS OLD HORSES**

Jump-off (if any)	None
Speed/Fixed time	350m/min
Height of obstacles:	1.35m
Number of horses per athlete	3
Number of Starters:	100* (if more than 100 take part then please refer to
Section XIV point 9)	
Total prize money:	900€
Chart to be used:	1 (25% to winner) <input checked="" type="checkbox"/>
	2 (33% to winner) <input type="checkbox"/>

Please specify prize money amount for each athlete placed 13<sup>th</sup> and beyond: 9€

\* \* \* \* \*

**SECOND DAY: THURSDAY** **DATE (dd/mm/yy): 08/10/2020**

**COMPETITION No: 31**

Type of Competition: 2 Phases Special  
Acc. to Article: 274.2.5  
Competition description: **CSIYH\* FIVE YEARS OLD HORSES**

Jump-off (if any)	None
Speed/Fixed time	350m/min
Height of obstacles:	1.15m
Number of horses per athlete	3
Number of Starters:	100* (if more than 100 take part then please refer to
Section XIV point 9)	
Total prize money:	500€
Chart to be used:	1 (25% to winner) <input checked="" type="checkbox"/>
	2 (33% to winner) <input type="checkbox"/>

Please specify prize money amount for each athlete placed 13<sup>th</sup> and beyond: 5€

\* \* \* \* \*

Vejer de la Frontera 30 September – 11 October 2020

**COMPETITION No: 32**

Type of Competition: 2 Phases Special

Acc. to Article: 274.2.5

Competition description: **CSIYH\* SIX YEARS OLD HORSES**

Jump-off (if any)	None
Speed/Fixed time	350m/min
Height of obstacles:	1.25m
Number of horses per athlete	3
Number of Starters:	100* (if more than 100 take part then please refer to
Section XIV point 9)	
Total prize money:	700€
Chart to be used:	1 (25% to winner) <input checked="" type="checkbox"/>
	2 (33% to winner) <input type="checkbox"/>

Please specify prize money amount for each athlete placed 13<sup>th</sup> and beyond: 7€

\* \* \* \* \*

**COMPETITION No: 33**

Type of Competition: Table A against the clock

Acc. to Article: 238.2.1

Competition description: **CSIYH\* SEVEN YEARS OLD HORSES**

Jump-off (if any)	None
Speed/Fixed time	350m/min
Height of obstacles:	1.35m
Number of horses per athlete	3
Number of Starters:	100* (if more than 100 take part then please refer to
Section XIV point 9)	
Total prize money:	900€
Chart to be used:	1 (25% to winner) <input checked="" type="checkbox"/>
	2 (33% to winner) <input type="checkbox"/>

Please specify prize money amount for each athlete placed 13<sup>th</sup> and beyond: 9€

\* \* \* \* \*

**COMPETITION No: 34**

Type of Competition: Table A against the clock

Acc. to Article: 238.2.1

Competition description: **CSI3\* MEDIUM CLASS A**

Jump-off (if any)	None
Speed/Fixed time	350m/min
Height of obstacles:	1.30 m
Number of horses per athlete	2
Number of Starters:	100* (if more than 100 take part then please refer to
Section XIV point 9)	
Total prize money:	1.000€
Chart to be used:	1 (25% to winner) <input checked="" type="checkbox"/>
	2 (33% to winner) <input type="checkbox"/>

Please specify prize money amount for each athlete placed 13<sup>th</sup> and beyond: 10€

\* \* \* \* \*

**COMPETITION No: 35**

Type of Competition: Table A against the clock

**Vejer de la Frontera 30 September – 11 October 2020**

---

Acc. to Article: 238.2.1

Competition description: **CSI3\* MEDIUM CLASS B**

Jump-off (if any)	None	
Speed/Fixed time	350m/min	
Height of obstacles:	1.35 m	
Number of horses per athlete	2	
Number of Starters:	100*	(if more than 100 take part then please refer to Section XIV point 9)
Total prize money:	2.000€	
Chart to be used:	1 (25% to winner)	<input checked="" type="checkbox"/>
	2 (33% to winner)	<input type="checkbox"/>

Please specify prize money amount for each athlete placed 13<sup>th</sup> and beyond: 20€

\* \* \* \* \*

**COMPETITION No: 36 (QUALIFIER FOR CLASS 44 & 54)**

Type of Competition: Table A against the clock

Acc. to Article: 238.2.1

Competition description: **CSI3\* BIG CLASS B**

**This class counts for the Longines Ranking Group D (LR 4)**

**The best 100 riders will qualify for the Big Class B Class 44 (1.45m-Friday)**

**The best 30 placed riders qualify for the Big Class GP Class 54 (1.50m-Sunday)**

**Should the overall number of riders be equal to/less than 100 no qualification system will be applied.**

Jump-off (if any)	None	
Speed/Fixed time	375m/min	
Height of obstacles:	1.45m	
Number of horses per athlete	1	
Number of Starters:	100*	(if more than 100 take part then please refer to Section XIV point 9)
Total prize money:	25.400€	
Chart to be used:	1 (25% to winner)	<input checked="" type="checkbox"/>
	2 (33% to winner)	<input type="checkbox"/>

Please specify prize money amount for each athlete placed 13<sup>th</sup> and beyond: 125€

\* \* \* \* \*

**THIRD DAY: FRIDAY**

**DATE (dd/mm/yy): 09/10/2020**

**COMPETITION No: 37**

Type of Competition: 2 Phases Special

Acc. to Article: 274.2.5

Competition description: **CSIYH\* FIVE YEARS OLD HORSES**

Jump-off (if any)	None	
Speed/Fixed time	350m/min	
Height of obstacles:	1.15m	
Number of horses per athlete	3	
Number of Starters:	100*	(if more than 100 take part then please refer to Section XIV point 9)

**FEI APPROVED SCHEDULE**

**Vejer de la Frontera 30 September – 11 October 2020**

---

Total prize money: 700€  
 Chart to be used: 1 (25% to winner)   
 2 (33% to winner)   
 Please specify prize money amount for each athlete placed 13<sup>th</sup> and beyond: 7€

\* \* \* \* \*

**COMPETITION No: 38**

Type of Competition: Table A against the clock  
 Acc. to Article: 238.2.1  
 Competition description: **CSIYH\* SIX YEARS OLD HORSES**

Jump-off (if any) None  
 Speed/Fixed time 350m/min  
 Height of obstacles: 1.25m  
 Number of horses per athlete 3  
 Number of Starters: 100\* (if more than 100 take part then please refer to Section XIV point 9)  
 Total prize money: 900€  
 Chart to be used: 1 (25% to winner)   
 2 (33% to winner)   
 Please specify prize money amount for each athlete placed 13<sup>th</sup> and beyond: 9€

\* \* \* \* \*

**COMPETITION No: 39**

Type of Competition: Table A against the clock  
 Acc. to Article: 238.2.1  
 Competition description: **CSIYH\* SEVEN YEARS OLD HORSES**

Jump-off (if any) None  
 Speed/Fixed time 350m/min  
 Height of obstacles: 1.35m  
 Number of horses per athlete 3  
 Number of Starters: 100\* (if more than 100 take part then please refer to Section XIV point 9)  
 Total prize money: 1.100€  
 Chart to be used: 1 (25% to winner)   
 2 (33% to winner)   
 Please specify prize money amount for each athlete placed 13<sup>th</sup> and beyond: 11€

\* \* \* \* \*

**COMPETITION No: 40**

Type of Competition: Table A against the clock  
 Acc. to Article: 238.2.1  
 Competition description: **CSI3\* SMALL CLASS A**

Jump-off (if any) None  
 Speed/Fixed time 350m/min  
 Height of obstacles: 1.10m  
 Number of horses per athlete 2  
 Number of Starters: 100\* (if more than 100 take part then please refer to Section XIV point 9)  
 Total prize money: 400€  
 Chart to be used: 1 (25% to winner)   
 2 (33% to winner)



Vejer de la Frontera 30 September – 11 October 2020

Please specify prize money amount for each athlete placed 13<sup>th</sup> and beyond: 4€

\* \* \* \* \*

**COMPETITION No: 41**

Type of Competition: Table A against the clock

Acc. to Article: 238.2.1

Competition description: **CSI3\* SMALL CLASS B**

Jump-off (if any)	None
Speed/Fixed time	350m/min
Height of obstacles:	1.20m
Number of horses per athlete	2
Number of Starters:	100* (if more than 100 take part then please refer to
Section XIV point 9)	
Total prize money:	500€
Chart to be used:	1 (25% to winner) <input checked="" type="checkbox"/>
	2 (33% to winner) <input type="checkbox"/>

Please specify prize money amount for each athlete placed 13<sup>th</sup> and beyond: 5€

\* \* \* \* \*

**COMPETITION No: 42**

Type of Competition: 2 Phases Special

Acc. to Article: 274.2.5

Competition description: **CSI3\* MEDIUM CLASS A**

Jump-off (if any)	None
Speed/Fixed time	350m/min
Height of obstacles:	1.30m
Number of horses per athlete	2
Number of Starters:	100* (if more than 100 take part then please refer to
Section XIV point 9)	
Total prize money:	1.000€
Chart to be used:	1 (25% to winner) <input checked="" type="checkbox"/>
	2 (33% to winner) <input type="checkbox"/>

Please specify prize money amount for each athlete placed 13<sup>th</sup> and beyond: 10€

\* \* \* \* \*

**COMPETITION No: 43**

Type of Competition: Table A against the clock

Acc. to Article: 238.2.1

Competition description: **CSI3\* BIG CLASS A**

Jump-off (if any)	None
Speed/Fixed time	375m/min
Height of obstacles:	1.40m
Number of horses per athlete	2
Number of Starters:	100* (if more than 100 take part then please refer to
Section XIV point 9)	
Total prize money:	3.000€
Chart to be used:	1 (25% to winner) <input checked="" type="checkbox"/>
	2 (33% to winner) <input type="checkbox"/>

Please specify prize money amount for each athlete placed 13<sup>th</sup> and beyond: 30€

\* \* \* \* \*

**COMPETITION No: 44 (QUALIFIER FOR CLASS 54)**

Type of Competition: Table A against the clock  
 Acc. to Article: 238.2.1  
 Competition description: **CSI3\* BIG CLASS B**

**This class counts for the Longines Ranking Group D (LR 5)**

**Open to the best 100 placed riders of class 36 Big Class B (1.45m-Thursday)  
 The best 30 placed riders qualify for the Big Class GP Class 54 (1.50m-Sunday)**

**If a qualified rider does not start or is already qualified, he will be replaced by the next rider up until 4 hours prior to the competition.**

**Should the overall number of riders be equal to/less than 100 no qualification system will be applied.**

Jump-off (if any)	None	
Speed/Fixed time	375m/min	
Height of obstacles:	1.45m	
Number of horses per athlete	1	
Number of Starters:	100	
Total prize money:	25.400€	
Chart to be used:	1 (25% to winner)	<input checked="" type="checkbox"/>
	2 (33% to winner)	<input type="checkbox"/>

Please specify prize money amount for each athlete placed 13<sup>th</sup> and beyond: 125€

\* \* \* \* \*

**FOURTH DAY: SATURDAY**

**DATE (dd/mm/yy): 10/10/2020**

**COMPETITION No: 45**

Type of Competition: Table A against the clock  
 Acc. to Article: 238.2.1  
 Competition description: **CSI3\* SMALL CLASS A**

Jump-off (if any)	None	
Speed/Fixed time	350m/min	
Height of obstacles:	1.10m	
Number of horses per athlete	2	
Number of Starters:	100* (if more than 100 take part then please refer to	
Section XIV point 9)		
Total prize money:	400€	
Chart to be used:	1 (25% to winner)	<input checked="" type="checkbox"/>
	2 (33% to winner)	<input type="checkbox"/>

Please specify prize money amount for each athlete placed 13<sup>th</sup> and beyond: 4€

\* \* \* \* \*

**COMPETITION No: 46**

Type of Competition: Accumulator  
 Acc. to Article: 269.1,2,3,5  
 Competition description: **CSI3\* SMALL CLASS B**

Jump-off (if any)	None
-------------------	------

**Vejer de la Frontera 30 September – 11 October 2020**

---

Speed/Fixed time 350m/min  
 Height of obstacles: 1.20m  
 Number of horses per athlete 2  
 Number of Starters: 100\* (if more than 100 take part then please refer to Section XIV point 9)  
 Total prize money: 500€  
 Chart to be used: 1 (25% to winner)   
 2 (33% to winner)   
 Please specify prize money amount for each athlete placed 13<sup>th</sup> and beyond: 5€

\* \* \* \* \*

**COMPETITION No: 47**

Type of Competition: Table A against the clock  
 Acc. to Article: 238.2.1  
 Competition description: **CSI3\* MEDIUM CLASS A**

Jump-off (if any) None  
 Speed/Fixed time 350m/min  
 Height of obstacles: 1.30m  
 Number of horses per athlete 2  
 Number of Starters: 100\* (if more than 100 take part then please refer to Section XIV point 9)  
 Total prize money: 1.000€  
 Chart to be used: 1 (25% to winner)   
 2 (33% to winner)   
 Please specify prize money amount for each athlete placed 13<sup>th</sup> and beyond: 10€

\* \* \* \* \*

**COMPETITION No: 48**

Type of Competition: 2 Phases Special  
 Acc. to Article: 274.2.5  
 Competition description: **CSI3\* MEDIUM CLASS B**

Jump-off (if any) None  
 Speed/Fixed time 350m/min  
 Height of obstacles: 1.35m  
 Number of horses per athlete 2  
 Number of Starters: 100\* (if more than 100 take part then please refer to Section XIV point 9)  
 Total prize money: 2.000€  
 Chart to be used: 1 (25% to winner)   
 2 (33% to winner)   
 Please specify prize money amount for each athlete placed 13<sup>th</sup> and beyond: 20€

\* \* \* \* \*

**COMPETITION No: 49**

Type of Competition: Table A against the clock with Jump Off  
 Acc. to Article: 238.2.2  
 Competition description: **CSI3\* BIG CLASS A**

Jump-off (if any) One  
 Speed/Fixed time 375m/min  
 Height of obstacles: 1.40m  
 Number of horses per athlete 2

Vejer de la Frontera 30 September – 11 October 2020

Number of Starters: 100\* (if more than 100 take part then please refer to  
 Section XIV point 9)  
 Total prize money: 4.000€  
 Chart to be used: 1 (25% to winner)   
 2 (33% to winner)   
 Please specify prize money amount for each athlete placed 13<sup>th</sup> and beyond: 40€

\* \* \* \* \*

**FIFTH DAY: SUNDAY**

**DATE (dd/mm/yy): 11/10/2020**

**COMPETITION No: 50**

Type of Competition: Table A against the clock  
 Acc. to Article: 238.2.1  
 Competition description: **CSI3\* SMALL CLASS A**

Jump-off (if any) None  
 Speed/Fixed time 350m/min  
 Height of obstacles: 1.10m  
 Number of horses per athlete 2  
 Number of Starters: 100\* (if more than 100 take part then please refer to  
 Section XIV point 9)  
 Total prize money: 400€  
 Chart to be used: 1 (25% to winner)   
 2 (33% to winner)   
 Please specify prize money amount for each athlete placed 13<sup>th</sup> and beyond: 4€

\* \* \* \* \*

**COMPETITION No: 51**

Type of Competition: Table A against the clock  
 Acc. to Article: 238.2.1  
 Competition description: **CSI3\* SMALL CLASS B**

Jump-off (if any) None  
 Speed/Fixed time 350m/min  
 Height of obstacles: 1.25m  
 Number of horses per athlete 2  
 Number of Starters: 100\* (if more than 100 take part then please refer to  
 Section XIV point 9)  
 Total prize money: 500€  
 Chart to be used: 1 (25% to winner)   
 2 (33% to winner)   
 Please specify prize money amount for each athlete placed 13<sup>th</sup> and beyond: 5€

\* \* \* \* \*

**COMPETITION No: 52**

Type of Competition: 2 Phases Special  
 Acc. to Article: 274.2.5  
 Competition description: **CSI3\* MEDIUM CLASS B**

Jump-off (if any) None  
 Speed/Fixed time 350m/min  
 Height of obstacles: 1.35m  
 Number of horses per athlete 2

Vejer de la Frontera 30 September – 11 October 2020

Number of Starters: 100\* (if more than 100 take part then please refer to Section XIV point 9)  
 Total prize money: 2.000€  
 Chart to be used: 1 (25% to winner)  **x**  
 2 (33% to winner)

Please specify prize money amount for each athlete placed 13<sup>th</sup> and beyond: 20€

\* \* \* \* \*

**COMPETITION No: 53**

Type of Competition: Table A against the clock  
 Acc. to Article: 238.2.1  
 Competition description: **CSI3\* BIG CLASS A**

Jump-off (if any) None  
 Speed/Fixed time 375m/min  
 Height of obstacles: 1.40m  
 Number of horses per athlete 2  
 Number of Starters: 100\* (if more than 100 take part then please refer to Section XIV point 9)  
 Total prize money: 3.000€  
 Chart to be used: 1 (25% to winner)  **x**  
 2 (33% to winner)

Please specify prize money amount for each athlete placed 13<sup>th</sup> and beyond: 30€

\* \* \* \* \*

**COMPETITION No: 54**

Type of Competition: Table A against the clock with Jump Off  
 Acc. to Article: 238.2.2 + FEI Olympic Regulations Art. 632.6.1  
 Competition description: **CSI3\* BIG CLASS GP**

*This competition will count as a competition where athletes and horses, as a combination, can achieve the Minimum Eligibility Requirements (MER) or the Confirmation Result for the Tokyo Olympic Games in 2021 providing the course meets the following specifications: consist of at least 12 obstacles which may vary in height between 1.40m and 1.60m. The spread obstacles must have spreads of between 1.50m to 2.00m (2.20m for the triple bar). At least two straight obstacles must be provided with a minimum height of 1.60m.*

*The Foreign Judge is responsible for ensuring that the course is built to the required dimensions and must confirm to the FEI through the Foreign Judge Report whether or not the course requirements have been met and must upload/sent the course plan including all heights and dimensions.*

**This class counts for the Longines Ranking Group C (LR 6)**

**Open to the best 30 placed riders of class 36 Big Class B (1.45m-Thursdays) and the best placed riders of class 44 Big Class B (1.45m-Friday) until the number of 60 starters is reached.**

The following Athletes (not Athlete/Horse combinations) are automatically qualified for the Grand Prix at CSI Events, if present:

- 4.2.1. The winner of that Event's Grand Prix the previous year;
- 4.2.2. The current National Jumping Champion of the host country;
- 4.2.3. The individual Jumping medal winners of the last Olympic and Pan-American Games, the last World and Continental Championships and the winner of the last FEI World Cup™ Jumping Final.

All athletes qualified for the Grand Prix, including those automatically qualified must complete, with their Grand Prix horse, the initial round of at least one FEI competition prior to the Grand

Prix.

**If a qualified rider does not start or is already qualified, he will be replaced by the next rider up until 4 hours prior to the competition.**

*Art. 254.6. If there are 30 starters or less, each Athlete may ride two Horses.*

Jump-off (if any)	One
Speed/Fixed time	375m/min
Height of obstacles:	1.50m (2 verticals of 1m60 compulsory)
Number of horses per athlete	1
Number of Starters:	60
Total prize money:	54.200€
Chart to be used:	1 (25% to winner) <b>x</b>
	2 (33% to winner) <input type="checkbox"/>

Please specify prize money amount for each athlete placed 13<sup>th</sup> and beyond: 250€

\* \* \* \* \*

**X. FACILITIES OFFERED****1. ATHLETES****Accommodation**

At the expense of: The Organiser  or Athletes   
Accommodated (bed and breakfast) from \_\_\_\_\_ to \_\_\_\_\_

Requests for accomodation: sunshinetour@sunshinetour.net

**Meals**

At the expense of: The Organiser  or Athletes   
Meals provided from \_\_\_\_\_ to \_\_\_\_\_ .

**2. GROOMS****Accommodation.**

Requests for accommodation must be sent with entries.

At the expense of: The Organiser  or Athletes   
Accommodated (bed and breakfast) from \_\_\_\_\_ to \_\_\_\_\_

Requests for accomodation: sunshinetour@sunshinetour.net

**Meals.**

At the expense of: The Organiser  or Athletes   
Meals provided from \_\_\_\_\_ to \_\_\_\_\_ .

**NB: If applicable, Organiser must provide proper sanitary conditions. The showering facilities should be sufficient for both male and female grooms with hot and cold water. Shower facilities as well as restrooms should at all times be in a state of cleanliness.**

## XI. LOGISTICAL/ADMINISTRATIVE/TECHNICAL INFORMATION

### 1. DRAW

List of Draws, time, date and location: Draw will be made by computer at the Show Office the day before each class.

### 2. COMPETITION ARENA(S)

Dimensions: Arena 3: 150mx80m  
Type of Footing: Grass

### 3. PRACTICE ARENA(S)

Dimensions: Arena 6: 80mx85m  
Type of Footing: Sand "All weather"

Riders must have the possibility to exercise their horses in an exercise area under a Steward's supervision at least 30 minutes per day outside of the competition warm-up period. Details of opening times of exercise areas must be included in the timetable.

### 4. STABLES

Size of boxes 3 m x 3 m (minimum 3m x 3m+20% 3m x 4m)

### 5. SAFETY CUPS

Name of Manufacturer: BECK & HEUN GMBH Steinstrasse 4 D-35794 Mengerkirchen

### 6. TIMING DEVICE

Name of Manufacturer: ALGE  
Model: TDC 8001  
FEI Report number: 22020007A

### 7. SCORING/TIMING PROVIDER

Will you use a FEI Certified Service Provider to manage the scoring and timing at your Event?

(The list of certified Service Providers is available here: <https://inside.fei.org/fei/your-role/it-services/it-providers/list>)

No

Name of the company: CIRCUITO HÍPICO DEL SOL, S.L.

Contact person at Event

Name: Begoña Quirós Cabrera

FEI ID number: 10114813

Contact email: office@sunshinetour.net

The FEI may require to be provided with real time results data feed of your events according to FEI requirements; in this case you and your provider will be informed accordingly.

### 8. OTHER TECHNOLOGY/SERVICE PROVIDER(S)

Will you use other technology/service provider(s) at your event?



No **9. PRIZE GIVING CEREMONY**

The owner of the winning horse/pony must be invited to the prize giving ceremony for the Grand Prix, if present at the event.

The number of athletes required to present themselves for the prize-giving ceremony of each competition is 5.

**10. ADVERTISING ON ATHLETES AND HORSES**

At CSI events, and all competitions except for the Nations Cup, athletes are authorised to carry the logo of their personal sponsor in accordance with the articles 256.3 and 257.3 of the FEI Jumping Rules.

The Chief Steward will check that the advertising on athletes and horses complies with these Articles.

**11. TICKETING**

Are you selling tickets for spectators to attend your event: Yes  No

Name of your ticketing provider:

Web address to buy ticket:

**12. BETTING**

Betting will be authorised by the Organiser: Yes  No

**13. TRANSPORT REIMBURSEMENT HORSES / PONIES**

Transport expenses to be paid by:

The Organiser  at \_\_\_\_\_ per km.

The Athlete

**14. WELCOME**

The time and date of arrival of athletes, horses and their means of transport must be given to the Organiser in order to facilitate their arrival.

**15. LOCAL TRANSPORTATION - ARRANGEMENTS FROM HOTEL TO SHOWGROUNDS**

Walking distance

Organiser Shuttle Service

Public Transport  to be paid by the Organiser  / the Athlete

If paid by Athlete approximate cost per round trip:

Other:

**16. ENTRY RIGHT TO SHOWGROUNDS/ACCREDITED PERSONS**

Entry right to the stable area according to FEI Veterinary Regulations Articles 1008-1009.

NUMBER OF ACCREDITED PERSONS:

Athlete: 1

Partner: 1

Groom: 1

Horse Owner: 2 two (2) accreditations per horse acc. to FEI-Passport

**17.SUSTAINABILITY**

Please consider the environment when organising an FEI Event. Please find useful information on FEI Sustainability here: <http://inside.fei.org/fei/your-role/organisers/handbook>

## XII. VETERINARY MATTERS

### 1. CUSTOMS FORMALITIES

Contact details for Customs Formalities:

Name: TRANSHIPICA INTERNATIONAL JESUS ESTEVEZ  
Address: Asunción, 15. Brunete (Madrid-Spain)  
Telephone: +34 918 158 276  
Fax: +34 918 158 270  
Email: info@jesusestevez.com  
Opening hours:

Space for organiser to include details if necessary

### 2. HEALTH REQUIREMENTS

#### GENERAL

In accordance with the FEI Code of Conduct for the Welfare of the Horse it is imperative that all Horses at FEI Events are physically fit and free from infectious disease before being allowed to compete.

#### ENTRY OF HORSES

Required health tests and vaccinations:  
Quarantine period:  
Specimen Import Licence applied:

For questions or problems, please contact your Government Veterinary Services.

Space for organiser to include details if necessary

### 3. NATIONAL REQUIREMENTS

If applicable please provide: UE Requirements

Absolutely necessary for Spanish Authorities:

1. Horses coming from the rest of Spain: Transport and health certificate.
2. Horses coming from EU: International Transport Certificate valid between EU members.
3. Horses coming from other countries: Valid Certificate which is required at the moment of entry.

Only for horses travelling from Spain:

CODIGO DE EXPLOTACION O REGA: ES 110390000780

Dehesa Montenmedio

Carretera Nacional 340, Km.41.3

11150 Vejer de la Frontera (Cádiz-España)

#### 4. PONIES

FEI Veterinary Regulations, Chapter IX and Annex IX:

For all Pony Events, Ponies must be available for Pony Measurement if requested by the FEI.

#### 5. INJURY SURVEILLANCE

FEI Veterinary Regulations, Chapter VIII:

Horses participating in FEI Events are subject to injury surveillance protocols; and in the event of fatality, a post mortem examination.

#### 6. TRANSPORT OF HORSES

Horses must be fit to travel and be transported in suitable vehicles for the transport of horses. Any government requirements for disease testing and control must be requested well in advance, to ensure that the horse is in compliance by the time of arrival at the border of the country where the Event is taking place. Athletes, or their representatives, have the responsibility to comply with national legislation in both their country of origin and the host nation of the Event. Where necessary athletes must contact local government authorities or veterinary advisors for information regarding animal health requirements and transport legislation. Within the European Union (EU), this includes EU Council Regulation (EC) No 1/2005 concerning the protection of animals during transport within the Member States of the EU.

#### 7. VENUE ARRIVAL INFORMATION & FITNESS TO COMPETE

##### 7.1. PASSPORTS. FEI General Regulations Article 137

**For all issues relating to FEI Horse Passports/FEI Recognition Cards please contact your National Federation.**

All Horses competing at FEI Events must be registered with the FEI.

FEI Passports or FEI Recognition Cards (for those Horses with a national passport approved by the FEI) are compulsory for FEI Events.

NB: Horses entered in CIMs and in CSIP in their country of residence are not required to have an FEI Passport or FEI Recognition Card but must be properly registered with the FEI and identifiable (GRs 137.2).

Athletes who do not present a Horse's Passport and/or Recognition Card, or one that is not correctly validated or fail to meet other passport requirements will be **subject to Sanctions in accordance with Annex VI of the FEI Veterinary Regulations** and may not be allowed to compete.

**NB** for Horses permanently resident in a Member State of the European Union: all Horses must have a national EU passport in compliance with EU Regulations to which a FEI Recognition card is applied. The exception to this being Horses in possession of an FEI passport which has been continually revalidated without interruption.

##### 7.2. VACCINATIONS - EQUINE INFLUENZA. FEI Veterinary Regulations Article 1003

Horses competing at FEI Events must comply with the requirements for Equine Influenza vaccination in accordance with the Veterinary Regulations and as summarised below.

VACCINATION	PROTOCOL	ELIGIBILITY TO ENTER
-------------	----------	----------------------

		VENUE
<b>Primary Course</b>	1 <sup>st</sup> Vaccination: day 0 2 <sup>nd</sup> Vaccination: day 21-92	May compete 7 days after the 2 <sup>nd</sup> Vaccination
<b>First Booster</b>	Within 7 months of the 2 <sup>nd</sup> vaccination of the Primary Course	May compete for 6 months +21 days after the 2 <sup>nd</sup> vaccination of the Primary Course Must not compete in the 7 days after receiving a vaccination
<b>Boosters</b>	<b>MINIMUM:</b> within one year of previous booster vaccination <b>IF COMPETING:</b> must be in the 6 months +21 days of the booster previous vaccination	Must have been vaccinated within 6 months +21 days before arriving at the Event Must not compete in the 7 days after receiving a vaccination

All FEI registered Horses intending to compete at FEI Events (including CIMs) must be vaccinated against Equine Influenza in accordance with these VRs. The exception being if the applicable domestic legislation prevents the use of Equine Influenza vaccines within the relevant territory

### 7.3. EXAMINATION ON ARRIVAL. FEI Veterinary Regulations Article 1031

On arrival at an Event venue, all Horses must undergo an examination by a veterinarian to confirm their identification from their passport and micro-chip ID (where present), their vaccination status and general health. To protect all horses attending events, any Horse with a questionable health status concerning vaccination, disease or other concerns, must be stabled within the isolation facilities provided by the Organising Committee pending a decision on entering the venue.

### 7.4. HORSE INSPECTIONS. FEI Veterinary Regulations Articles 1034-1042

All Horses will be assessed for their fitness to compete during the Horse Inspection. Any Horse demonstrating questionable fitness may be referred to the Holding Box for further veterinary examination. Horses not deemed fit to compete by the Inspection Panel will not be permitted to compete.

### 7.5. LIMB SENSITIVITY EXAMINATION. FEI Veterinary Regulations Articles 1048-1053

All Horses are subject to examination under the protocol for abnormal limb sensitivity throughout the period of an Event. For Jumping that includes, but is not limited to, between rounds and before the Jump Off. Horses may be examined once or on multiple occasions during the Period of an Event.

Horses may be selected for examination under the protocol randomly or they may be targeted. All Horses selected to be tested must submit promptly to the examination or are subject to immediate disqualification. There is no obligation to examine any specific number of Horses at an Event.

## 8. EQUINE ANTI-DOPING AND CONTROLLED MEDICATION PROGRAMME (EADCMP). FEI VETERINARY REGULATIONS, CHAPTER VII

### 8.1. SAMPLING. FEI VETERINARY REGULATIONS Chapter VII

All horses competing at FEI Events may be subject to sampling for the presence of Prohibited Substances in accordance with the Anti-Doping and Controlled Medication Regulations (EADCMRs). Horses may be selected for sampling in accordance with obligatory testing, targeted or random sampling procedures. Refer to FEI Financial Charges for details of fees relating to Equine and Human Anti-Doping program (EADCMP), which OCs/NFs have the right to charge to the athlete

(applicable for all FEI events worldwide).

## 8.2. ELECTIVE TESTING. FEI VETERINARY REGULATIONS ARTICLES 1058

Elective Testing may be carried out prior to an Event to check for the presence of Prohibited Substances. Please refer to <https://inside.fei.org/fei/cleansport/horses> for information and details.

## XIII. HUMAN ANTI-DOPING

Athletes can be tested at any FEI Event, by the FEI or by other Anti-Doping Organisations with Testing jurisdiction. Organisers will have the responsibility to provide facilities and staff/volunteers to facilitate such Testing if requested by the FEI as outlined in article 22.3 of the FEI's Anti-doping Rules for Human Athletes (ADRHA).

The ADRHA rules are published on the FEI website at <http://inside.fei.org/content/anti-doping-rules>.

## XIV. ADDITIONAL INFORMATION

### 1. THE FEI POLICY FOR ENHANCED COMPETITION SAFETY DURING THE COVID-19 PANDEMIC

The FEI Policy for Enhanced Competition Safety during the Covid-19 Pandemic ("Policy") (<https://inside.fei.org/system/files/FEI%20Policy%20for%20Enhanced%20Competition%20Safety%20during%20the%20Covid-19%20Pandemic%20-%20Effective%201%20July%202020.pdf>) is mandatory and applies for any FEI Event taking place **as of 1 July 2020**. The Policy has been developed based on currently accepted best practices by the WHO and US Center for Disease Control (CDC) and will be continually reviewed and updated as more information becomes available. It is not intended to replace the applicable guidance and policies from domestic government and health authorities, but to supplement their recommendations with sport specific considerations.

The OC shall submit the risk assessment and mitigation plan (including name and contact details of the person in charge) to the FEI as an annex to the Event Schedule, **at the latest ten (10) working days before the event's deadline for Definite Entries**.

Events for which the FEI has not received the documented risk assessment and mitigation measures plan in accordance with article 2.1.g) of the Policy **will be removed from the FEI calendar** in accordance with Article 112.3 of the FEI General Regulations.

### **ASSUMPTION OF RISK / WAIVER OF LIABILITY**

In consideration of being allowed to participate in the Event and related activities, all Participants (as defined in the Policy) acknowledge, appreciate, and agree that:

1. Participation includes possible exposure to and illness from infectious diseases including but not limited to COVID-19. While particular rules and personal discipline may reduce this risk, the risk of serious illness and death does exist; and,
2. The Participants knowingly and freely assume all such risks, both known and unknown, even if arising from the negligence of the OC or others, and assume full responsibility for their participation; and,
3. The Participants willingly agree to comply with the stated and customary terms and

conditions for participation as regards protection against infectious diseases. If, however, a Participant observes any unusual or significant hazard during his/her presence or participation, the Participant will remove himself/herself from participation and bring such to the attention of the nearest official immediately; and,

4. The Participants, for themselves and on behalf of their heirs, assigns, personal representatives and next of kin, HEREBY RELEASE AND HOLD HARMLESS THE OC AND THE FEI, their officers, officials, agents, and/or employees, other participants, sponsoring agencies, sponsors, advertisers, and if applicable, owners and lessors of premises used to conduct the event ("RELEASEES"), WITH RESPECT TO ANY AND ALL ILLNESS, DISABILITY, DEATH, or loss or damage to person or property, WHETHER ARISING FROM THE NEGLIGENCE OF RELEASEES OR OTHERWISE, to the fullest extent permitted by law.

The Participants confirm to have read this release of liability and assumption of risk agreement, fully understand its terms, understand that they have given up substantial rights.

## **2. INSURANCES AND NATIONAL REQUIREMENTS**

Equestrian sports involve inherent dangerous risks. To the greatest extent permitted by law, the FEI and the FEI Event Organiser shall NOT be liable for any damages relating to loss of property or injury of any kind to Athletes, Owners, Support Personnel or Horses at or in connection with an FEI Event and the FEI expressly excludes all such liability.

### **2.1. ATHLETES, OWNERS AND SUPPORT PERSONNEL**

#### **2.1.1. Personal Accident and Health Insurance**

It is your responsibility as an Athlete/Owner/ Support Personnel to ensure that you have adequate personal accident insurance in place to cover your participation at FEI Events and in particular to insure against any personal injury or medical expenses arising from an accident, injury or illness which may occur at a FEI Event.

You should check with your National Federation to confirm if your National Federation's insurance policy (if any) covers personal accidents and/or illnesses which may occur when you are attending/participating in FEI Events.

If your National Federation does not have a personal accident/health insurance policy or if the National Federation's insurance policy does not cover personal accident or health claims, then you should obtain your own personal accident and health insurance policy to cover your attendance/participation at FEI Events.

#### **2.1.2. Personal Property Insurance**

You should also ensure that you are insured against property loss, theft or damage which may occur at an FEI Event.

Again, the advice is to check with your National Federation to confirm if they have an insurance policy in place which would cover you in case of such property loss, theft or damage. If not, then you should obtain your own personal property insurance to cover such situations.

#### **2.1.3. Press Equipment**

Press equipment and other items left in the Press workroom, Press lockers, the Press Tribune or anywhere on the showgrounds are left entirely at the owner's risk. The Organising Committee does not accept any responsibility for any loss or damage to such equipment or items. Members of the Press are advised not to leave any equipment or personal items

unattended.

## **2.2. ATHLETES AND OWNERS**

### **2.2.1. Third Party Liability Insurance**

As an Athlete/Owner you are personally responsible for damages to third parties caused by you, your employees, Support Personnel, your agents or your Horses. You are, therefore, strongly advised to take out third-party liability insurance providing full coverage in relation to FEI Events at home and abroad, and to keep the policy up to date.

The FEI and the Organiser will NOT be responsible for any damage caused to third parties by you, your employees, Support Personnel, your agents or your Horses.

### **2.2.2. Additional Liability Information**

Space for organiser to include reference to National Laws when necessary

### **2.2.3. Horse Insurance**

As an Owner you should ensure that your Horses are adequately insured against any injuries or illnesses they may sustain while participating at a FEI Event.

Space for organiser to include reference to National Laws when necessary

## **3. PROTESTS/APPEALS**

To be valid, all Protests and Appeals must be made in writing and accompanied by a deposit of CHF 150.- or equivalent.

Protest and appeal forms are available on the FEI website:

Protests: <http://inside.fei.org/sites/default/files/FEI%20Protest%20Form.pdf>

Appeals: <http://inside.fei.org/sites/default/files/FEI%20Appeal%20Form.pdf>

## **4. SCHOOLING DURING COMPETITIONS**

Athletes wishing to school during speed competitions (Table A and Table C) must inform the OC before these competitions begin. These athletes will start first in these competitions.

## **5. STEWARDING**

- If an athlete is uncertain as to whether the boots he/she intends to use during an event are allowed, he/she or his/her representative should show the boots to the Chief Steward for his/her opinion before the boots are used in training or in competition.
- In addition, athletes are to be made aware that hind boots must be removed and placed again on the horse's legs in the presence of a Steward while in the warm-up arena prior to entering the competition arena for certain competitions. (If bandages are used in place of boots, athletes are not required to remove the bandages in the warm-up arena.) This procedure is compulsory for competitions for which boot and bandage control is



mandatory, that is the Nations Cup, Grand Prix, and the competition with the highest prize money, and is at the discretion of the Chief Steward for other competitions.

- As an alternative to carrying out this procedure at the time designated by the Steward an athlete may ask his/her groom to take the boots to the in-gate and place them on the horse's legs in front of the Steward prior to the combination entering the arena.
- The Steward has the authority to intervene if a boot is deemed excessively tight by instructing that the boot be removed and put on again correctly. *[Stewards are to note that it is normal for a horse's gait to be somewhat affected immediately after boots have been removed and re-placed.]* If an athlete or his/her groom refuses to remove and replace the boot(s) when instructed to do so by the Steward, a Yellow Warning Card will be issued to the athlete in question.
- If it is deemed impossible or unsafe to remove the hind boots in the warm-up arena prior to the combination entering the competition arena, due to an extremely excited or nervous horse, the boots of the horse in question are to be removed by the athlete/groom following the athlete's round upon leaving the arena and inspected by the Steward. This inspection may be carried out during the boot and bandage control if the boot and bandage control is carried out for the competition in question.
- This procedure does not replace boot and bandage control after completion of an athlete's round for competitions for which boot and bandage control is mandatory (refer to JRs Art. 244.1).

## **6. DISPUTES**

In the event of any discussion concerning the interpretation of the schedule (in translated languages), the English version will be decisive.

## **7. MODIFICATION TO SCHEDULE**

In exceptional circumstances, together with the approval of Chefs d'Equipe, host NF delegate, if any, and the Ground Jury, the Organiser may change the schedule in order to clarify any matter arising from an omission or due to unforeseen circumstances. Any such changes must be notified to all athletes and officials as soon as possible and they must be reported to the FEI Secretary General by the Technical Delegate, the President of the Ground Jury or the Foreign Judge, as applicable.

## **8. ADDITIONAL INFORMATION FROM THE OC**

Space for organiser to include any additional information

**Age of Athletes and Horses according to the Event's Category**

<b>Event's Category</b>	<b>Age of Athletes</b>	<b>Age of Horses</b>
<b>Olympic Games/WEG</b>	As of 18 <sup>th</sup> year	Min 9 y.o.
<b>Continental Championships Senior</b>	As of 18 <sup>th</sup> year	Min 8 y.o.
<b>Regional Championships/Games</b>	As of 18 <sup>th</sup> year As of 16 <sup>th</sup> year if height of obstacles max.1.40m (JRs Annex IX, Art. 6.1)	Min. 8 y.o. Min. 7 y.o. if height of obstacles max. 1.40m (JRs Art. 254.1.1)
<b>World Cup Final</b>	As of 18 <sup>th</sup> year	Min. 9 y.o.
<b>Nations Cup Final</b>	As of 18 <sup>th</sup> year	Min. 8 y.o.
<b>CSI-W1*-5*/CSIO-W1*-5*</b> Grand Prix, World Cup, Nations Cup, Power and Skill, Derby or Competition with the highest prize money Other Competitions Other Competitions if height max. 1.40m Other Competitions if height max. 1.30m	As of 18 <sup>th</sup> year As of 16 <sup>th</sup> year with permission of their NF As of 14 <sup>th</sup> year " " As of 12 <sup>th</sup> year " "	Min. 7 y.o. Min. 7 y.o. Min. 7 y.o. Min. 7 y.o.
<b>CSI3*-5*/CSIO3*-5*</b> Grand Prix, Nations Cup, Power and Skill, Derby or Competition with the highest prize money Other Competitions Other Competitions if height max. 1.40m Other Competitions if height max. 1.30m	As of 18 <sup>th</sup> year As of 16 <sup>th</sup> year with permission of their NF As of 14 <sup>th</sup> year " " As of 12 <sup>th</sup> year " "	Min. 7 y.o.
<b>CSI2*</b> Power and Skill or Derby Grand Prix Other Competitions if height max. 1.40m Other Competitions if height max. 1.30m	As of 18 <sup>th</sup> year As of 16 <sup>th</sup> year with permission of their NF As of 14 <sup>th</sup> year " " As of 12 <sup>th</sup> year " "	Min. 6 y.o.
<b>CSIO2*</b> Nations Cup, Grand Prix, Power and Skill, Derby or Competition with the highest prize money Other Competitions Other Competitions if height max. 1.40m Other Competitions if height max. 1.30m	As of 18 <sup>th</sup> year As of 16 <sup>th</sup> year with permission of their NF As of 14 <sup>th</sup> year " " As of 12 <sup>th</sup> year " "	Min. 6 y.o. *
<b>CSI1*</b> Power and Skill or Derby Grand Prix / Other Competitions Other Competitions if height max. 1.30m	As of 18 <sup>th</sup> year As of 14 <sup>th</sup> year with permission of their NF As of 12 <sup>th</sup> year " "	Min. 6 y.o.
<b>CSIO1*</b> Nations Cup, Grand Prix, Power and Skill, Derby or Competition with the highest prize money Other Competitions Other Competitions if height max. 1.40m Other Competitions if height max. 1.30m	As of 18 <sup>th</sup> year As of 16 <sup>th</sup> year with permission of their NF As of 14 <sup>th</sup> year " " As of 12 <sup>th</sup> year " "	Min. 6 y.o.
<b>CH-Y</b>	As of 16 <sup>th</sup> year to end 21 <sup>st</sup> year	Min. 7 y.o.
<b>CSI/CSIO-Y</b>	As of 16 <sup>th</sup> year to end 21 <sup>st</sup> year	Min. 7 y.o.
<b>CH-J</b>	As of 14 <sup>th</sup> year to end 18 <sup>th</sup> year	Min. 7 y.o.
<b>CSI/CSIO-J</b>	As of 14 <sup>th</sup> year to end 18 <sup>th</sup> year	Min. 6 y.o.
<b>CSI/CSIO-Ch/CH-Ch</b>	As of 12 <sup>th</sup> year to end 14 <sup>th</sup> year	Min. 6 y.o.
<b>CSI/CSIOP/CH-P</b>	As of 12 <sup>th</sup> year to end 16 <sup>th</sup> year Ponies must be registered as ponies with FEI	Min. 6 y.o.
<b>CSIU-25</b>	As of 16 <sup>th</sup> year to end 25 <sup>th</sup> year As of 14 <sup>th</sup> year if height max. 1.40m	Min. 7 y.o.
<b>CSIV</b>	As of 45 <sup>th</sup> year	Min. 6 y.o.
<b>CSIAm</b>	As of 12 <sup>th</sup> year until end of 13 <sup>th</sup> year if competition height is max. 1.30 m; as of 14 <sup>th</sup> year if height exceeds 1.30 m.	Min. 6 y.o.
<b>CSIYH</b>	Per Art. 255.2	Min. 5 y.o. – Max. 8 y.o.
<b>CH-M-YH-S</b>	As of 18 <sup>th</sup> year or 16 year for athletes qualified with the same horse	5 y.o. / 6 y.o. / 7 y.o.

\* Art. 254.1.1: Horses entered for CSIO2\* Events at which the Nations Cup is built to the dimensions set forth in JRs Art. 264.3 for 2\* Events must be at least 6 years old; Horses entered for CSIO2\* Events at which the Nations Cup is built to the dimensions set forth in JRs Art. 264.3 for 3\* Events or higher must be at least 7 years old.

9. PRIZE MONEY DISTRIBUTION

**Prize Money Distribution Chart 1:** Prize money distribution with **25%** of prize money for the winner updated 30.01.2019

N° of starters	up to 11	12-48		49-100		101-110 declared starters		111-120 declared starters	
N° of prizes	Same as the number of starters who finish the competition	12		First 12 acc. to percentages below; extra prizes for 13 <sup>th</sup> to last*		First 16 acc. to percentages below; extra prizes for 17 <sup>th</sup> to last*		First 20 acc. to percentages below; extra prizes for 21 <sup>st</sup> to last*	
Prize money	Example: Competition prize money = 40'000.-	100% = 40'000		100% = 40'000		133% = 53'200		166% = 66'400	
		%		%		%		%	
1	All athletes who complete the competition receive prize money, to be distributed according to the percentages at right from the 1 <sup>st</sup> placed to the last placed athlete. The remaining prizes, i.e. the prizes foreseen up to 12 <sup>th</sup> place, are then distributed in descending order starting again with the 1 <sup>st</sup> placed athlete until there are no more prizes to be distributed. See examples below. 5 athletes: winner gets prize for 1 <sup>st</sup> (25%) and the other athletes get the relevant percentages down to the last athlete, i.e. 5 <sup>th</sup> place (7%). The prize for 6 <sup>th</sup> (5.5%) is then given to the winner, the prize for 7 <sup>th</sup> (4%) is given to the 2 <sup>nd</sup> placed athlete, the prize for 8 <sup>th</sup> (3%) is given to the 3 <sup>rd</sup> placed athlete, the prize for 9 <sup>th</sup> (3%) is given to the 4 <sup>th</sup> placed athlete and the prize for 10 <sup>th</sup> (2.5%) is given to the 5 <sup>th</sup> placed athlete. The prize for 11 <sup>th</sup> (2.5%) is then given to the 1 <sup>st</sup> placed athlete and the prize for 12 <sup>th</sup> (2.5%) is given to the 2 <sup>nd</sup> placed athlete. 10 athletes: winner gets prize for 1 <sup>st</sup> (25%) and 11 <sup>th</sup> (2.5%), second placed gets prize for 2 <sup>nd</sup> (20%) and 12 <sup>th</sup> (2.5%); the remaining athletes receive the prize money for their placing as per the percentages from 3 <sup>rd</sup> to 10 <sup>th</sup> place.	25	10'000	25	10'000	25	13'300	25	16'600
2		20	8000	20	8000	20	10'640	20	13'280
3		15	6000	15	6000	15	7980	15	9960
4		10	4000	10	4000	9	4788	8	5312
5		7	2800	7	2800	6.5	3458	6	3984
6		5.5	2200	5.5	2200	5	2660	4.5	2988
7		4	1600	4	1600	3.5	1862	3	1992
8		3	1200	3	1200	2.5	1330	2.5	1660
9		3	1200	3	1200	2.5	1330	2.5	1660
10		2.5	1000	2.5	1000	2	1064	2	1328
11		2.5	1000	2.5	1000	2	1064	2	1328
12		n/a	2.5	1000	2.5	1000	2	1064	2
Total	40'000	100%	40'000	100%	40'000				
13						1.5	798	1.5	996
14						1.5	798	1.5	996
15						1	532	1	664
16						1	532	1	664
Total						100%	53'200		
17								1	664
18								0.5	332
19								0.5	332
20								0.5	332
Total								100%	66'400
									Extra prizes for 21 <sup>st</sup> to last place*

\* The OC must provide additional prizes for the remaining placed athletes to fulfil quota of one prize per four athletes. The amount to be given to each of these athletes must be stated in the Schedule.

**Prize Money Distribution Chart 2:** Prize money distribution with **33%** of prize money for the winner updated 30.01.2019

N° of starters	up to 11	12-48		49-100		101-110 declared starters		111-120 declared starters	
N° of prizes	Same as the number of starters who finish the competition	12		First 12 acc. to percentages below; extra prizes for 13 <sup>th</sup> to last*		First 16 acc. to percentages below; extra prizes for 17 <sup>th</sup> to last*		First 20 acc. to percentages below; extra prizes for 21 <sup>st</sup> to last*	
Prize money	Example: Competition prize money = 40'000.-	100% = 40'000		100% = 40'000		133% = 53'200		166% = 66'400	
		%		%		%		%	
1	All athletes who complete the competition receive prize money, to be distributed according to the percentages at right from the 1 <sup>st</sup> placed to the last placed athlete. The remaining prizes, i.e. the prizes foreseen up to 12 <sup>th</sup> place, are then distributed in descending order starting again with the 1 <sup>st</sup> placed athlete until there are no more prizes to be distributed. See examples below. 5 athletes: winner gets prize for 1 <sup>st</sup> (25%) and the other athletes get the relevant percentages down to the last athlete, i.e. 5 <sup>th</sup> place (7%). The prize for 6 <sup>th</sup> (5.5%) is then given to the winner, the prize for 7 <sup>th</sup> (4%) is given to the 2 <sup>nd</sup> placed athlete, the prize for 8 <sup>th</sup> (3%) is given to the 3 <sup>rd</sup> placed athlete, the prize for 9 <sup>th</sup> (3%) is given to the 4 <sup>th</sup> placed athlete and the prize for 10 <sup>th</sup> (2.5%) is given to the 5 <sup>th</sup> placed athlete. The prize for 11 <sup>th</sup> (2.5%) is then given to the 1 <sup>st</sup> placed athlete and the prize for 12 <sup>th</sup> (2.5%) is given to the 2 <sup>nd</sup> placed athlete. 10 athletes: winner gets prize for 1 <sup>st</sup> (25%) and 11 <sup>th</sup> (2.5%), second placed gets prize for 2 <sup>nd</sup> (20%) and 12 <sup>th</sup> (2.5%); the remaining athletes receive the prize money for their placing as per the percentages from 3 <sup>rd</sup> to 10 <sup>th</sup> place.	33	13'200	33	13'200	33	17'556	33	21'912
2		20	8000	20	8000	19.5	10'374	19.5	12'948
3		15	6000	15	6000	14.5	7714	14.5	9628
4		10	4000	10	4000	9.5	5054	8.5	5644
5		6	2400	6	2400	5.5	2926	5	3320
6		4.5	1800	4.5	1800	4	2128	3.5	2324
7		3	1200	3	1200	2.5	1330	2.5	1660
8		2.5	1000	2.5	1000	2	1064	2	1328
9		2	800	2	800	2	1064	2	1328
10		2	800	2	800	2	1064	2	1328
11		1	400	1	400	1	532	1	664
12		n/a	1	400	1	400	1	532	1
Total	40'000	100%	40'000	100%	40'000				
13						1	532	1	664
14						1	532	1	664
15						1	532	1	664
16						0.5	266	0.5	332
Total						100%	53'200		
17								0.5	332
18								0.5	332
19								0.5	332
20								0.5	332
Total								100%	66'400
									Extra prizes for 21 <sup>st</sup> to last place*

\* The OC must provide additional prizes for the remaining placed athletes to fulfil quota of one prize per four athletes. The amount to be given to each of these athletes must be stated in the Schedule.

In case of a tie for the 12<sup>th</sup> place in a competition with 12 to 48 starters, the prize money foreseen for the 12<sup>th</sup> place will be divided equally among the athletes concerned.

**For Competitions run in two rounds with more than 12 starters in 2<sup>nd</sup> round:**

OCs that indicate in the schedule that a specific number (that is more than 12) of athletes will return for the second round will be permitted to distribute the prize money for that competition among all the athletes taking part in the second round, even if the second round is followed by a jump-off in case of a tie on penalties for first place after the second round.

**DEDUCTIONS FROM PRIZE MONEY AT COMPETITIONS:**

Full details of any deductions from prize money must be outlined in the schedule. This includes government taxes. If it is necessary for Organisers to deduct such taxes, they must provide participants with an official form indicating the amount of tax deducted.

**The tax form must be provided to the athletes upon arrival and returned to the Organiser prior to departing.**

According to the Spanish Law concerning Physical Person Return Tax (I.R.P.F), the OC must deduct the rate fixed by the above-mentioned law over all the sums paid to the competitors. This rate differs according to the athletes nationality. It depends on the international agreements established by Spain with the different European countries. Currently, the tax rate (I.R.P.F) for Foreign Competitors is 24%.

All riders may ask for further information to:

MINISTERIO DE ECONOMIA Y HACIENDA  
Delegación de Hacienda de Madrid  
c/ Guzman El Bueno, 73  
28015 MADRID (ESPAÑA)

Prize money is including 21% VAT.

**IMPORTANT**

**The total amount of prize money shown for each Competition in the schedule must be distributed. (FEI General Regulations articles 127 and 128)**

For details of the prize money breakdown for each competition please refer to the tables at the end of this document; the Organiser must specify which of the two (2) tables will be used. The total prize money for the Competition must be distributed among the first twelve (12) placed athletes.

The Organiser must provide additional created prizes for athletes placed beyond twelfth (12<sup>th</sup>) place. The minimum amount for each of these additional prizes, for athletes placed from thirteenth (13<sup>th</sup>) to last place, must be clearly specified in the approved schedule and not exceed the prize money of the athlete placed twelfth (12<sup>th</sup>)

**10. MAXIMUM NUMBER OF STARTERS PER COMPETITION****\*Annex VI FEI Jumping Rules:**

Maximum 100 starters per Competition other than the GP. If more than 100 starters are declared, the OC must provide the following percentages of additional prize money for every ten declared starters, up to 120 declared starters:

- 101 to 110 declared starters: the OC must provide 133% of the original Competition prize money, which is to be distributed among the 16 best placed athletes in the Competition according to the prize money distribution chart I or II. The additional prize money provided by the OC is not taken into consideration with regard to the overall prize money that determines the star level of the Event or the Longines Ranking point group of the Competition, if applicable.
- 111 to 120 declared starters: the OC must provide 166% of the original Competition prize money, which is to be distributed among the 20 best placed athletes in the Competition

according to the prize money distribution chart I or II. The additional prize money provided by the OC is not taken into consideration with regard to the overall prize money that determines the star level of the Event or the Longines Ranking point group of the Competition, if applicable.

If more than 120 starters are declared, the OC must split the Competition into two groups and provide 200% of the original Competition prize money which is to be divided equally between the two groups. The additional prize money provided by the OC is not taken into consideration with regard to the overall prize money that determines the star level of the Event or the Longines Ranking point group of the Competition, if applicable.

OCs may apply either of the following methods for splitting the Competition:

The competition is split into two groups before it starts. There may be athletes with multiple horses in each group but all horses of any one athlete must be in the same group. If it is not possible to have two groups of equal size there may be a different number of starters in each group;

OR

The competition is run as one single competition and split afterward into two groups and the classification established as follows: the athlete with the best score is the winner of the first group, the athlete with the second best score is the winner of the second group and so on until prizes have been allocated to 25% of the total number of starters. *NB: In this case separate results must be sent to the FEI for each of the two groups, e.g. results for Competition 1a and for Competition 1b.*

In both cases above each group must offer the same amount of prize money. For the avoidance of doubt, it is the number of declared starters in the Competition, not the final number of starters, that determines whether the Competition must be split.

If there are more than 200 declared starters, the OC must split the Competition into three groups and provide the same percentages of additional prize money as indicated above (100% of original Competition prize money to be provided for each of the three groups if each group has 100 or fewer starters; 133% of original prize money to be provided for each group if any of the three groups has 101-110 starters; 166% of original prize money to be provided for each if any of the three groups has 111-120 starters).

<sup>3</sup> For CSI-W Events with a Grand Prix Competition in addition to the FEI World Cup™ competitions, the minimum prize money requirements indicated above for the Grand Prix apply only to the FEI World Cup™ Competition as it has the status of a Grand Prix; the Grand Prix Competition at such Events cannot offer more prize money than the prize money offered for the FEI World Cup™ Competition. Refer to the FEI Jumping World Cup™ rules for details relating to date of implementation of this rule at CSI-W Events.

## 11. GLOSSARY

### \*Glossary FEI Jumping Rules:

#### Fees:

- Compulsory Fee: Compulsory Fees are fees that may be charged by the OC for costs/services not included in the Entry Fee. Compulsory Fees, if charged, must be paid by the Athletes concerned as outlined below. Only the following Compulsory Fees may be charged by the OC, providing full details of the amount to be charged is included in the Schedule and approved by the FEI:
  - NF fee if applicable
  - NF medication control programme fee if applicable
  - FEI EADCMR fee if applicable (OC to indicate in the Schedule if the EADCMR fee is included in the Entry Fee or not)
  - Fee for health/customs-related documents for Horses if these have been requested by the Athlete.
  - Fee for manure disposal (maximum € 40 per horse per Event)

- Fee for lorry parking if applicable (The fee indicated in the Schedule may only be charged per lorry not per Athlete.)
- Fee for electric hook-up for lorry (The fee indicated in the Schedule may only be charged per lorry, not per Athlete.)
- Discretionary Fee: Discretionary Fees are fees that may be charged for optional commodities/services that may be purchased by an Athlete if he so chooses and that do not affect the equity of the Athlete's right to compete at the Event or the well-being of the Horse, such as:
  - VIP or premium parking
  - VIP table
  - Extra box for tack or for non-competing Horse
  - Extra bedding and/or fodder (details to be included e.g. shavings, straw, hay)
  - Premium stabling (all stabling at the Event must meet minimum FEI requirements)
- Entry Fee: The Entry Fee is the fee charged to participate in an Event with one Horse and covers the following:
  - Stabling of one Horse for the duration of the Event (includes cleaning and disinfecting stables before the event, including between Events that are part of Tours, water and electricity in the stables, first bedding or a fixed amount of bedding depending on the type of event and 24 hour security services for the stables)
  - Use of all facilities at the Event (no infrastructure fees may be charged)
  - Right to participate in all Competitions in accordance with the conditions in the Schedule (no nomination fees or start fees may be charged)
  - Administrative/Office fees (includes all services relating to administration of the Event and running of the Competitions: data/results/timing services, bookkeeping and accreditation services)

**XV. ANNEXES****1. FEI ENTRY SYSTEM**

Please fill the form below in order to provide you and the other members of your committee or your IT Providers access to the FEI Entry System.

**FEI ID<sup>1</sup>:** 10006341  
**Name\*:** Teresa  
**First Name\*:** Blázquez Abascal  
**E-Mail\*:** info@sunshinetour.net  
**Access Rights\*:**  Admin<sup>2</sup>  Consult<sup>3</sup>  
**Events<sup>4</sup>:**

---

**FEI ID<sup>1</sup>:** 10114813  
**Name\*:** Begoña  
**First Name\*:** Quirós Cabrera  
**E-Mail\*:** office@sunshinetour.net  
**Access Rights\*:**  Admin<sup>2</sup>  Consult<sup>3</sup>  
**Events<sup>4</sup>:**

---

**FEI ID<sup>1</sup>:**  
**Name\*:**  
**First Name\*:**  
**E-Mail\*:**  
**Access Rights\*:**  Admin<sup>2</sup>  Consult<sup>3</sup>  
**Events<sup>4</sup>:**

---

<sup>1</sup> If already have an FEI user account.

<sup>2</sup> Provides you the required access to manage entries and substitutions and download entries/lists.

<sup>3</sup> You are just able to consult and download the entries/lists.

<sup>4</sup> Leave the field blank if the user deals with the entries of all events in the show.

\* **Mandatory Fields**

## 2. RESULTS

In order to proceed with the results publication and for qualification purposes the FEI requires results **to be uploaded directly on the FEI Database** within two days after the conclusion of the event.

All relevant information, file format and tutorial can be found on this page:

<http://inside.fei.org/fei/your-role/organisers/xml-format>

If you or your provider are unable to produce the required files, results will be accepted by e-mail to [results@fei.org](mailto:results@fei.org), in the proper Excel or "XML" format immediately after the event.

Please refer to compulsory format for CSIs/CSIOs/Championships and Games; the file can be downloaded using the following link:

<https://inside.fei.org/fei/your-role/it-services/results/jumping-results-forms>

**All results must include FEI Passport Registration number of horses and FEI ID number of Riders.**

Please note that as per Art. 109.6 (GR): OCs of International Jumping Events must inform the FEI and NFs whose teams or individuals have taken part, of the results and prize money paid to each placed Athlete and team, within two (2) days following the Event, unless otherwise specified for qualification and ranking reasons as communicated by the FEI. Failure from OCs of International Events to provide the FEI with the appropriate result(s) and/or prize money information by the aforesaid deadline and/or in the aforesaid format shall entail a warning for the first violation and thereafter a fine of CHF 1'000.- per violation.

**THE APPENDIX (8 PAGES) IS PART OF THIS APPROVED AND SIGNED SCHEDULE AND MUST BE DISTRIBUTED TO ALL OFFICIALS AND NFs AND IS AVAILABLE TO OTHERS UPON REQUEST**