

This document contains:

- The Event Covid-19 risk assessment and risk mitigation plan in accordance with the [FEI Policy for Enhanced Competition Safety during the Covid-19 Pandemic](#)
- The Event Approved Schedule

Given the current covid-19 situation, please note that the FEI's approval of a Schedule should not be taken as an absolute guarantee that the Event will definitely go ahead. The decision whether the Event can take place must be made by the OC and NF in close consultation with the applicable domestic government and public health authorities. It is the responsibility of each Participant to check the status of the Event prior to planning his/her travel to the Event.

Guidance for the use of the WHO Risk Assessment tools in the context of COVID-19 - FEI version

Guidance for FEI Event organisers ("OCs") during the current outbreak of COVID-19

In view of the current outbreak of COVID-19, this disease-specific and event-specific risk assessment and mitigation checklist has been developed by WHO for use by host countries and event organizers, to assess the specific risk of COVID-19.

The FEI has slightly adapted the wording in the document, mainly by replacing the initial term "mass gathering sporting event" by "FEI Event". Under the FEI Policy for Enhanced Competition Safety during the Covid-19 Pandemic, which applies to all FEI Events taking place after 1 July 2020, all OCs of FEI Events must carry out a risk assessment of their Event in terms of Covid-19 transmission, using the present document.

The following risk assessment and mitigation checklist should be used in conjunction with the "WHO Mass Gathering Sports Addendum Guidelines" - OCs should consider the term "mass gathering" in it as synonym of "FEI Event" in this context.

In order to accurately provide answers the following risk assessment and mitigation checklist, OCs must be knowledgeable on the current COVID-19 outbreak. OCs should reference the daily global COVID-19 situation reports provided by WHO as well as the national COVID-19 situation reports, if available.

The tool must be completed in this Excel spreadsheet (see following tabs), as the scores are automatically calculated there. Once the tool is completed, the scores received in the Excel spreadsheet for both sections will appear in the decision matrix found on the final tab ("Overall risk scores") for the Event's overall risk score to be determined.

It must be ensured that this risk assessment is conducted with input from local public health authorities and that the necessary personnel with expertise in mass gatherings, risk assessment, epidemiology, and infectious disease control measures are included from the initial stages of planning.

For the final determination, factors under consideration include:

- the current stage of the COVID-19 outbreak and known transmission dynamics
- the geographical distribution and number of participants, and their individual risk profile
- the risk assessment tool
- the mitigation measures that are currently in place or feasible and any discipline-specific guidance issued by the FEI.

It is important to remember that while mitigation measures can reduce the risk of COVID-19 infections, they cannot completely eliminate the threat. It is WHO's view that all countries with community transmission should seriously consider postponing or reducing sport events that bring people together and have the potential to amplify disease, and support the recommended best practice of physical distancing. Any decision will be supported through the use of WHO tools, in particular this risk assessment tool.

If movement restrictions and further national measures have been established in the country, the risk assessment does not apply.

However, when the process of re-opening/conducting mass gatherings is being considered post movement restrictions, it will be key to ensure any decisions are based on a risk assessment, such as the WHO Mass gatherings COVID-19 risk assessment.

Risk assessment for COVID-19

The questions below will enable OCs to review the additional considerations specific to sports, and thus inform their risk assessment of COVID-19 associated with their Event. This will help OCs understand and manage any additional risk from COVID-19.

The risk assessment should be reviewed and reassessed regularly during the planning phase and updated immediately prior to the transition to the operational phase, especially in light of the rapidly evolving nature of the outbreak. Reference should be made to the latest technical guidance and situation reports on the WHO website.

The risk assessment for COVID-19 associated with the Event must be coordinated and integrated with the host country's national risk assessment for COVID-19. The person completing the questionnaire should include input from the local public health authorities, consult WHO's latest technical guidance and ensure that there is an up-to-date evaluation of the epidemiological situation.

Please answer Yes (1) or No (0) to the following questions to determine a risk assessment score that incorporates factors specific to sporting events

Additional risk of COVID-19 to the sporting event	Yes (1)/No (0)	Score
Will the event be held in a country that has documented active local transmission of COVID-19 (community spread)?	1	1
Will the event be held in a single venue or multiple venues/cities/countries? <i>(single venue = 0; multiple venues = 1)</i>	0	0
Will the event include international participants (athletes and spectators) from countries that have documented active local transmission of COVID-19 (community spread)? <i>(NB: if the Events does not involve spectators, please clarify this in the comments to the questions in relation to spectators in the "Mitigation Checklist" sheet)</i>	1	1
Will the event include a significant number of participants (athletes or spectators) at higher risk of severe COVID-19 disease (e.g., people over 65 years of age or people with underlying health conditions)?	0	0
Will the event include sports that are considered at higher risk of spread for COVID-19 (eg, contact sports)?	0	0
Will the event be held indoors? <i>(Yes = 1; No = 0)</i>	0	0
Total COVID-19 risk score		2

Mitigation checklist for COVID-19

Mitigation measures assess the current effort and planning to reduce the risk of spread of COVID-19 disease for the event. As mitigation measures can reduce the overall risk of the sporting event contributing to the spread of COVID-19, they should be taken into account after the risk assessment has occurred to gain a clearer understanding of the overall risk of transmission and further spread of COVID-19, should the event be held. Together with the risk assessment score, the mitigation measure will contribute to the decision matrix and influence the assessment of the overall risk of transmission and further spread of COVID-19 in relation to the event.

Topic	Key consideration	Score Yes/Completed (2), Maybe/In progress (1), No/Not considered (0)	Weighting	Total score	Comments
Understanding of the overview of the current COVID-19 situation by the OC	Have the relevant OC and responsible staff been informed about the latest available guidance on the COVID-19 outbreak (official web resources available from WHO, CDC, ECDC, UN, local public health authorities)? And are the OC and staff concerned committed to following the available guidance?	2	1	2	
	Is the OC aware of global and local daily situation reports as provided by WHO or local public health authorities?	2	1	2	
	Do the OC and responsible staff understand the risks and transmission routes of COVID-19, the steps that Event attendees can take to limit spread, the recognized best practices (including respiratory etiquette, hand hygiene, physical distancing, etc.), and the travel restrictions adopted by different countries that may affect the Event?	2	1	2	
Event emergency preparedness and response plans	Has a contingency medical response plan for COVID-19 been developed for the Event?	2	3	6	
	Does the contingency medical response plan include information about how attendees should interact with the host country healthcare system (e.g. hotline/helpline telephone number, medical teams and first-aid points for the Event, local health care system)?	2	3	6	
	Is there an Emergency COVID-19 Outbreak Response Coordinator/Team in the OC or other structure structure for the Event with defined roles and responsibilities, coordinating the health preparedness and response planning for the outbreak?	2	2	4	
	Has the host country or OC requested support from WHO and/or local public health authorities ?	2	3	6	
	Has the OC acquired the following supplies to help reduce the risk of transmission of COVID-19?				
	Personal protective equipment (e.g. masks, gloves, gowns) for onsite medical personnel	2	3	6	
	Hand sanitizer and alcohol rubs/gels, tissues, frequently replaced soap canisters and closed bins for safe disposal of hygienic materials (e.g. tissues, towels, sanitary products) in washrooms and changing rooms	2	3	6	
	Hand sanitizers and alcohol rubs for all entrances and throughout the venue	2	3	6	

If a person feels unwell/ shows symptoms of an acute respiratory infection during the Event:					
Is there a procedure for athletes or spectators to clearly identify whom to contact and how to do so if they or other Event participants feel unwell?	2	3	6		
Is there a protocol on whom the OC should contact in the host country to report suspected cases and request testing and epidemiological investigations?	2	3	6		
Are first-aid services or other medical services in-place and equipped to support patients with respiratory symptoms?	2	2	4	We'll have an equipped ambulance at the showground and if needed the patient will be moved to the nearest Hospital that is located only 5 minutes from the facilities.	
Are there isolation rooms or mobile isolation units available onsite?	0	2	0	They should go to the relevant health authority.	
Are there any designated medical facilities that manage patients with COVID-19 infection in the host country?	2	2	4		
Are there transportation services with trained medical professionals available to transport critically ill patients with severe acute respiratory infections to a hospital or to evacuate them from the host country, if necessary?	2	2	4		
Has a cleaning schedule been developed to ensure the venue is clean and hygienic – wiping surfaces and any equipment regularly with disinfectant is strongly recommended (before, during and after the event and between each round of competition)?	2	3	6		
Are there established screening measures , including temperature checks in place for participants at the point of entry, venues, routes and on-site medical facilities (first-aid points)? (Please specify in Comments what these screening measures include)	2	3	6	The temperature of everyone will be taken at the arrival to the showground.	
Is the host country conducting COVID-19 laboratory diagnostic tests ? (If Yes, please specify in comments the type of COVID-19 diagnostic test used)	2	3	6		
Does the host country have a national public health emergency preparedness and response plan that can address severe respiratory diseases, including COVID-19?	2	2	4		
Is there a preliminary agreement by the host country to provide care for any COVID-19 cases connected with the Event?	1	3	3		
If the Event is for a duration of 14 days or longer, does the medical response plan for the event include resources and protocols for managing all public health interventions that would be necessary and supporting the national public health authorities if participants are infected and become unwell at the Event? (If the event is for less than 14 days, please score 0)	0	3	0		
If the Event is for less than 14 days, does the medical response plan include protocols for OCs to notify all participants of possible exposure to COVID-19 if the OCs are made aware of any suspected or confirmed cases that attended the Event? (If the event is for 14 days or longer, please score 0)	2	3	6		
Stakeholder and partner coordination	Is there an established mechanism for collaboration and coordination between the health and security sectors , which is considered as crucial?	2	2	4	
	Are there agreed, clear and easily understood processes in place for reporting to external multi-sectoral stakeholders (including surveillance authorities, WHO, CDC, ECDC, etc.) and disseminating risk communication messages (Media)?	2	2	4	

Command and control	Is there a decision-making authority/body and an agreed procedure to modify, restrict, postpone or cancel the Event related to the evolving COVID-19 outbreak?	2	3	6	
	Are there arrangements to activate a strategic health operations centre if there are suspected COVID-19 cases in connection with the Event?	2	2	4	
	Have the OC and staff undergone training and exercises on personal safety procedures and emergency mitigation measures (including those specifically listed in this checklist)?	1	3	3	
Risk communication	Is there a risk communication strategy for the Event in regard to COVID-19?	2	3	6	
	Is there a designated person(s) to lead media activities and tasked with managing all external communications with national and international government officials, the general public, and the media? (If yes, please identify the spokesperson in comments)	2	2	4	
	Has there been monitoring of national and international media and social media established for rumours to be able to counter them early? (Please explain in the comments what protocols are in place for counter messaging)	2	2	4	
	Has coordination been set up with major official media channels and social media sites such as Twitter, Facebook and Instagram so that messaging can be coordinated with, and assisted by, the platforms to provide targeted messaging from OCs (including messaging to counter fake news and rumours, and proactive messaging about the status of the sporting event, including changes)?	2	2	4	
Public health awareness of COVID-19 before and during the event	Has public health advice on clinical features of COVID-19, preventive measures, especially respiratory etiquette, hand hygiene practices, and physical distancing, been shared with all staff involved in the Event, athletes, the public, and personnel of all relevant stakeholders?	2	3	6	
	Has information on the at-risk populations been provided to all athletes, the public and others so they may make an informed decision on their attendance based on their personal risks?	2	3	6	
	Has public advice included information on the meaning of the following measures: quarantine, self-isolation and self-monitoring ?	2	2	4	
Surge capacity	Are there any surge arrangements in place in the event of a public health emergency during the Event - (i.e. suspected and confirmed cases of COVID-19)				
	Do these surge arrangements include funding for mitigation measures?	2	3	6	
	Do these surge arrangements include stockpiles of equipment (e.g. personal protective equipment, etc.)	2	3	6	
	Do these surge arrangements include training of extra staff?	2	2	4	
	Do these surge arrangements include volunteers?	0	2	0	
	Will there be daily health checks of athletes/competitors?	2	2	4	On arrival at the showground the temperature of each athlete will be taken.
	Will the athletes be separated from other groups , such as officials, support staff and spectators, to limit transmission?	2	2	4	
	Are there measures in place to limit the sharing of equipment, water bottles, towels, etc. ?	2	3	6	

Specific mitigation measures	Will athletes be given closed containers to allow for the safe disposal or storing of all hygienic materials (e.g. tissues, towels, etc.)?	2	3	6	
	Will the Event have designated seating for all spectators?	2	3	6	
	Does the designated seating provided allow for physical distancing between spectators (minimum of 1 metre)?	2	2	4	
	Have pre-travel health checks been performed on all athletes to ensure underlying co-morbidities, medications, allergies, etc. are documented?	0	2	0	

Sum of mitigation measures	202
Total mitigation score (%)	92

202

Event overall risk score

The decision matrix takes the risk score and the mitigation score to provide a colour determination. This colour determination identifies the total risk of transmission and further spread of COVID-19 in relation to the Event. The "Colour Determination" key below the decision matrix describes the total risk for each colour.

Total COVID-19 risk score (from "Risk Assessment" Tab)	2
--	---

Total mitigation score (from "Mitigation Checklist" Tab)	92
--	----

Risk Vs. Mitigation Matrix

Total Risk Assessment Score	Very Prepared to Mitigate COVID-19 Impacts (76-100)	Somewhat Prepared to Mitigate COVID-19 Impacts (51-75)	Somewhat Unprepared to Mitigate COVID-19 Impacts (26-50)	Very Unprepared to Mitigate COVID-19 Impacts (0-25)
0 - Negligible	Very low	Very low	Very low	Very low
1 - Very Low Risk	Very low	Very low	Low	Low
2 - Low Risk	Low	Low	Low	Moderate
3 - Moderate Risk (low-moderate)	Low	Moderate	Moderate	Moderate
4 - Moderate Risk (high-moderate)	Moderate	Moderate	High	Very High
5 - High Risk	High	High	Very High	Very High
6 - Very High Risk	Very High	Very High	Very High	Very High

KEY FOR COLOUR DETERMINATION OF OVERALL RISK	
VERY LOW	Overall risk of transmission and further spread of COVID-19 in relation to the Event is considered <u>very low</u> .
LOW	Overall risk of transmission and further spread of COVID-19 in relation to the Event is considered <u>low</u> . Recommend checking whether mitigation measures can be strengthened.
MODERATE	Overall risk of transmission and further spread of COVID-19 in relation to the Event is considered <u>moderate</u> . Recommend <u>significant</u> efforts to improve mitigation measures or reduce risk of transmission (decrease risk assessment score).
HIGH	Overall risk of transmission and further spread of COVID-19 in relation to the Event is considered <u>high</u> . Recommend <u>significant</u> efforts to improve <u>both</u> mitigation measures and reduce risk of transmission (decrease risk assessment score).
VERY HIGH	Overall risk of transmission and further spread of COVID-19 in relation to the Event is considered <u>very high</u> .

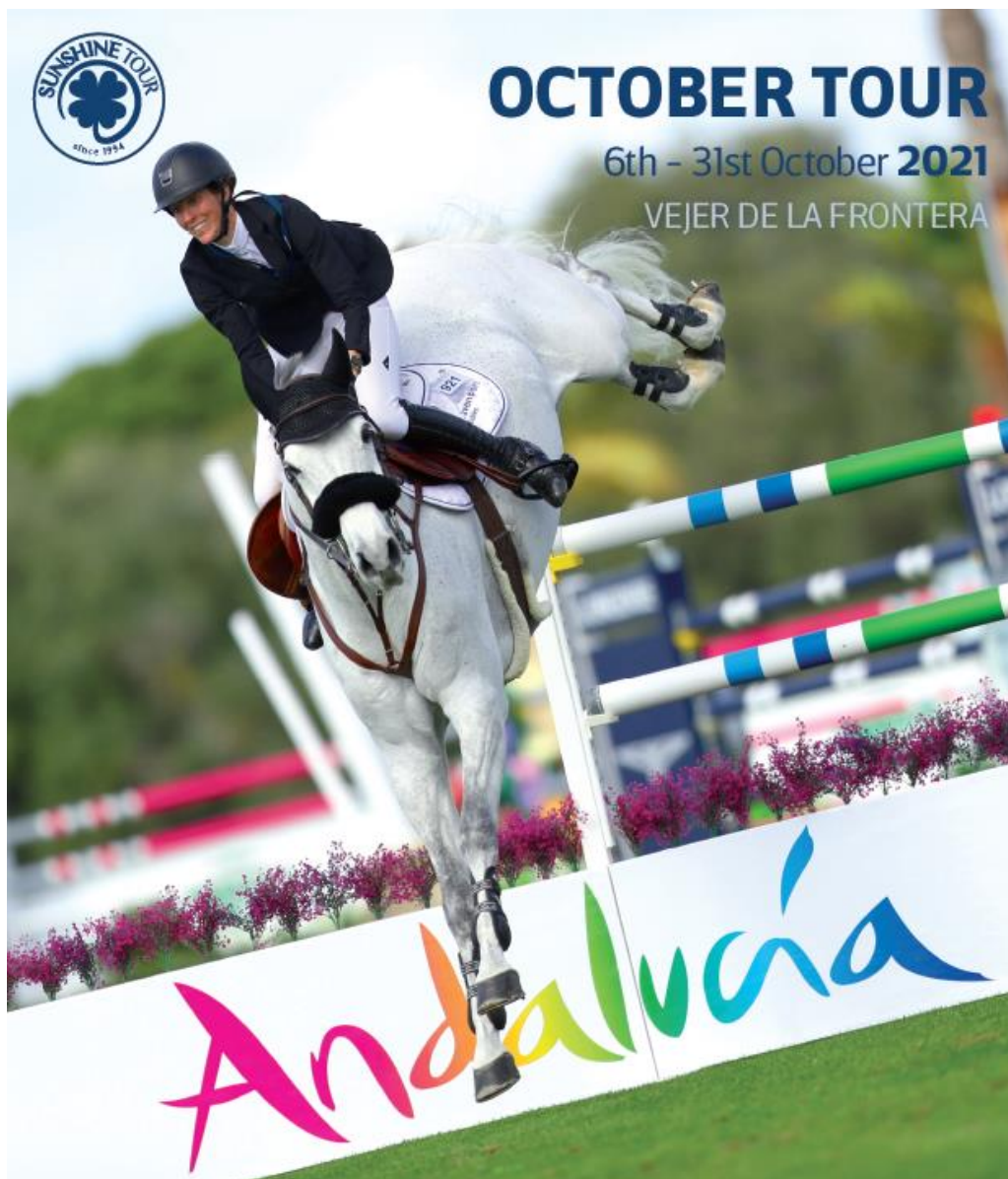


SUNSHINE TOUR

since 1994

PROTOCOL for the OCTOBER TOUR at DEHESA MONTENMEDIO 2021 6th-31st of October

1



Tel: +34 956 447 125 / +34 649 293 273
sunshinetour@sunshinetour.net
www.sunshinetour.net



SUNSHINE TOUR

since 1994

The following protocols and procedures will be established ensuring that the Sunshine Tour S.L. safely hosts this competition here at Montenmedio. Horse numbers have been limited. Thanks to the large size of our facilities and the experience of our showground teams, adequate safety measures are in place that minimise risks associated with COVID-19 transmission and that follow the guidelines set up by the Higher Sports Council and the Spanish Royal Federation Spanish of Horse Riding.

2

1. GENERAL COVID-19 RULES:

- The competition will be open **for the public, respecting the capacity limitations set out in the current measures of the Spanish Government.** The public will only have access to the grandstands and restaurants area.
- On arrival at the showground your temperature will be taken. Should it exceed 38 degrees centigrade you will be asked to leave the facilities and placing yourself in immediate contact with the relevant health services.
- **The use of the masks will be required inside of the buildings. All persons on the outside of the venue must wear a mask ONLY if the safety distance of 1.5m cannot be respected** (masks will be on sale at the Show Office).
- **All persons on the venue should respect the safety distance of 1.5m between others.**
- We encourage to **limit your physical social contacts.**
- There will be **air purifier anti COVID-19** in all the restaurants, toilets, and offices.
- There will be regular disinfection of all communal areas during the day (bathrooms, stable areas, showers etc).
- **Hydro-alcoholic gels** will be available throughout the facilities, and you will be expected to use these regularly to sanitize your hands when you access any area, such as the stables, the horse showering stations, the bathrooms and showers, restaurants, the Show Office, judges boxes and the warm up areas. There will be regular ventilation of closed spaces including the warehouses, restaurants, offices, bathrooms, showers and judges boxes etc.
- **In the case that you experience any symptoms related to Covid-19 you must cancel your entries and may not attend.**
People who develop symptoms on site must inform the OC immediately. This will enable the OC to alert the authorities responsible for contact tracing.

2. BEFORE TRAVELLING TO THE SUNSHINE TOUR/ ON ARRIVAL AT THE SHOWGROUND:

➤ **Before travelling to the Sunshine Tour:**

- As per the EHV-1 By-Laws, it is now mandatory to use the **FEI HorseApp** mobile application to:
- Enter the temperature of each horse twice daily for the 10 days leading up to the arrival at the event.
 - Fill in a Horse Health FEI Self-Certification form for all horses attending the event.
 - It will be necessary to communicate the date and time of arrival of the horses to the showground to the OC at least 2 days in advance.



SUNSHINE TOUR

since 1994

- ✓ We would also like to remind you to bring your own thermometer to the event as you will have to take the temperature of each horse after unloading them and twice a day during the event.

➤ **On arrival at the showground:**

- On your arrival the horses will be placed in their assigned stables by our Stable Manager. You should wait to the veterinarian that will come and check your horses.
- If your horses are deemed acceptable by the vet, you may unload your equipment.
- Passports and travel permits will be passed to the Stable Manager.
- Once documents have been passed to the Show Office you will be provided your competition numbers.
- There will be a limit number of people in each Office at any one time. Each secretary will attend only one person at a time, on this front we strongly recommend that you do not come to the office in groups but send a delegated person.
- **We stress that you only come to the Show Office when it is absolutely essential and that you use the online App to do most of your general planning and contact with showground staff (see point 4).**
- Riders, grooms, and partners will find the **accreditation** on the **online App in a digital format**. In the case that it is not feasible for someone to use this application please get in contact with us so that we may provide you, on arrival at the showground, with an accreditation wristband.
- In order to gain access the stable area **accreditation will be required**. We would like to ask all riders to **send us the details (address, identity card number, telephone number, e-mail address and a picture)** from the members of your team **before the 25th of September**.
- Head numbers will be provided by the OC. It is obligatory to use these head numbers at all times when a horse leaves the stables - disregarding for what reason (competition, clear round, training, grassing, a.s.o.).
 - ✓ ***Your number will remain the same for the four weeks of the competition.***

3. STABLE AREA:

- We recommend that everyone takes the utmost care to sanitize their own allocated areas.
- Hydrogels will be available both at the entrances to the stable areas and at the horse shower areas.
- The horse showers will be regularly sanitized by our staff. The use of the hydrogel before using these facilities is obligatory.

4. SECRETARY:

We recommend using the “Sunshine Tour Mobile” App (available for IOS & Android) for all your orders and planning at the competition:

- **Accreditation.**
- **Entries.**
- **Results.**
- **Videos:** using the App you can access and download all your videos for **FREE**.



SUNSHINE TOUR

since 1994

- The App will send you **notifications** of any program or timetable changes and it will provide you with all the information you need about the Show (amongst other things it contains a short program, plan of the installations and personalised competition times etc.)
- **Orders for forage etc can be made by merely entering your stable number and stable Zone (A or B). You may also accredit your groom to make orders on your behalf.**
- **Live Streaming. (also available on our website at www.sunshinetour.net).**
- **Accounts.** Your account will be available through the App and should be paid by a bank transfer. Once payment is confirmed the Show Office will send you an appointment so you may pass by and collect your documents, return your numbers, etc.
- **Following the BOE guidelines contactless payments should be made.**
- Applications for **health papers** need to be done at the Show Office at least 7 days before of your departure. It will be necessary to provide the entry health papers and the form that will be available at the Show Office and/or through the App and need to be filled in complete and correctly at own responsibility.

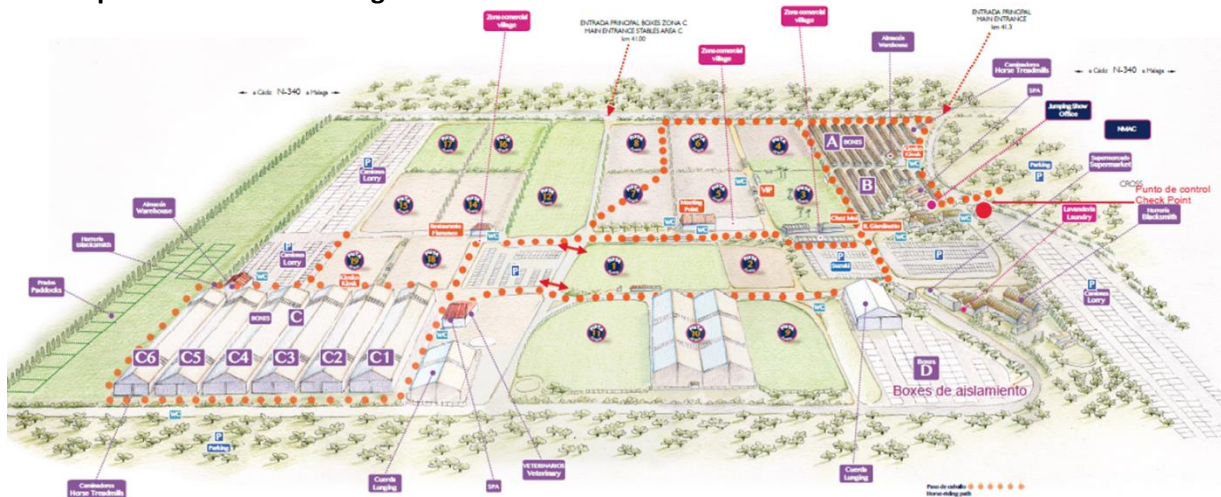
We must stress that you may only come to the Show Office if absolutely essential and unavoidable and that you must use the App for activities and requests.

You can contact the show / accounting office as follows:

- **Show Office: +34 956 447 125 (Ext.1) / +34 649 293 273 (WhatsApp) - sunshinetour@sunshinetour.net**
- **Accounting Office: +34 956 447 125 (Ext.2) / +34 673 35 26 01 (WhatsApp) - contabilidad@sunshinetour.net**

5. WARM UP ARENAS:

- Each competition arena will have a specific warm up arena.
- Access to the arenas will be controlled at all times, only **25** horses that are entered in the current /relevant class will be allowed entry.
- There will be 1 arena for free access for training every day.
- Additionally, arena 10 will be open for lunging every day until 10.00 a.m.
- Only **ONE** person per rider may enter the warm up arenas.
- **The OC are in charge of setting up and disinfecting the warm up fences, replacing fallen poles and also of raking etc.**





SUNSHINE TOUR

since 1994

6. MEETINGS/RESTAURANTS

- ✓ **Parties and/or barbecues are completely forbidden throughout the facility (sanctions will be assessed to anyone who do not respect this rule).**
- ✓ **Restaurants will be open and will comply with the current regulations at the time of the celebration of the event.**

5

23/08/2021



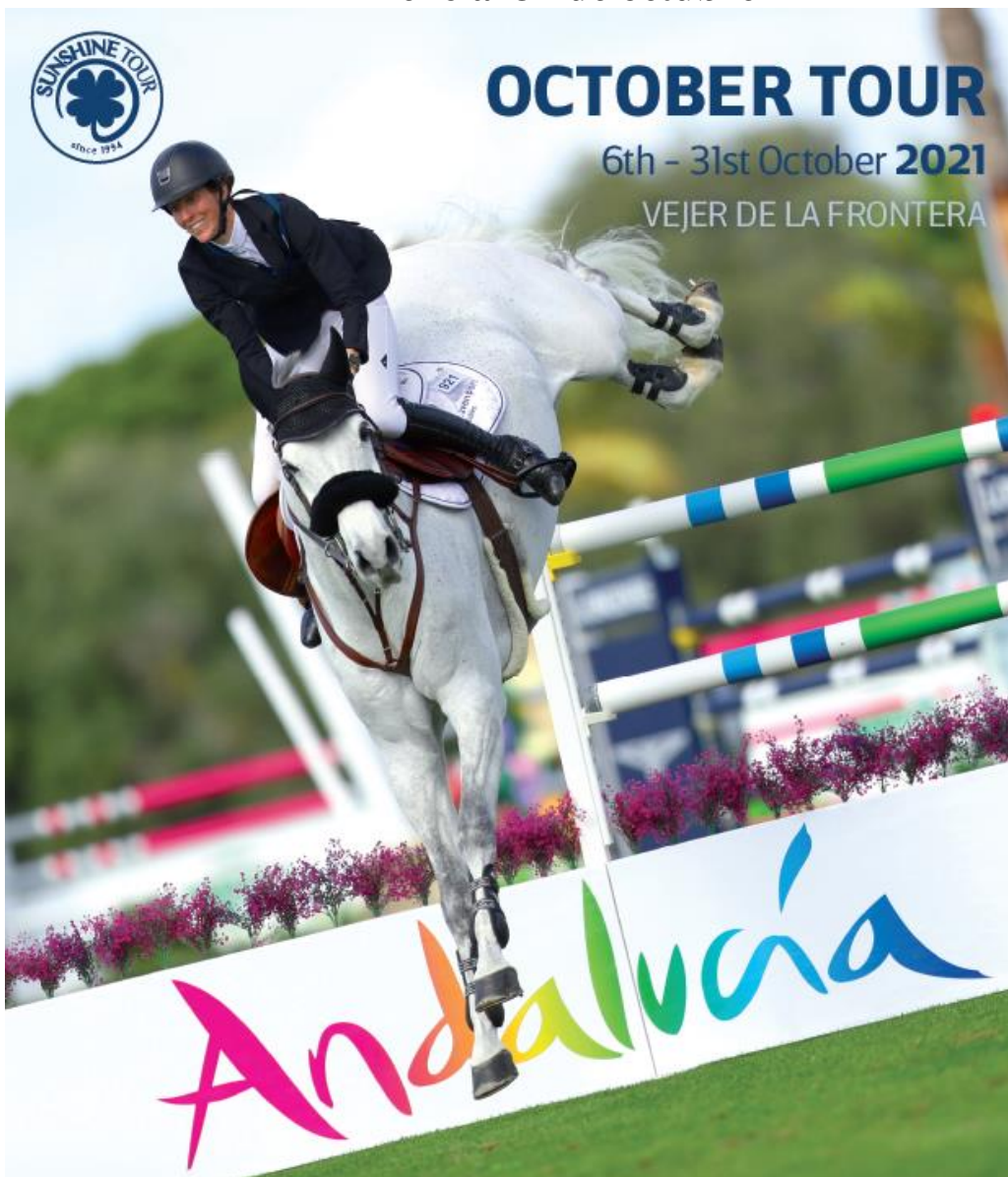
SUNSHINE TOUR

since 1994

PROTOCOLO OCTOBER TOUR DEHESA MONTENMEDIO 2021

Del 6 al 31 de octubre

6



Tel: +34 956 447 125 / +34 649 293 273
sunshinetour@sunshinetour.net
www.sunshinetour.net



SUNSHINE TOUR

since 1994

Los siguientes protocolos y procedimientos se establecerán para que Circuito Hípico del Sol, S.L. celebre sus próximos concursos de forma segura. Hemos limitado el número de caballos y gracias a la dimensión de la instalación, así como a la experiencia de nuestro equipo se proporcionan las adecuadas condiciones para el desarrollo de la competición siguiendo con las directrices marcadas por el Consejo Superior de Deportes y la Real Federación Hípica Española para evitar los riesgos asociados con la COVID-19.

7

1. NORMAS GENERALES COVID-19:

- Se autorizará el acceso del **público general** a la instalación, respetando las limitaciones de aforo marcadas en la normativa vigente. El público sólo tendrá acceso a la zona de gradas y restaurantes.
- A su llegada a la instalación se le tomará la temperatura y si esta es superior a 38 grados deberá abandonar la instalación de inmediato y ponerse en contacto con las autoridades sanitarias competentes.
- **Será obligatorio el uso de mascarillas en todo momento en el interior y, en el exterior sólo en el caso de que no pueda respetarse la distancia mínima de seguridad de 1.5m.**(Dispondremos de mascarillas para la venta en la Show Office).
- **Será obligatorio respetar la distancia de seguridad de 1.5m.**
- Se recomienda **limitar el contacto físico** con otras personas.
- Dispondremos de un **sistema purificador de aire anti-COVID-19** en todos los restaurantes, aseos y oficinas.
- Se desinfectarán varias veces al día las zonas de uso común de toda la instalación (baños, zona de boxes, duchas, etc.).
- Dispondremos de **geles hidroalcohólicos** en toda la instalación con los que deberán desinfectarse las manos con frecuencia; los accesos a la zona de boxes, duchas para los caballos, accesos a los aseos y duchas, entradas a los restaurantes, oficina del concurso, casetas de jurado, así como en las pistas de calentamiento.
- Se realizarán tareas de ventilación periódica en los espacios cerrados tales como almacén, restaurantes, oficinas, baños, duchas, casetas de jurado, etc.
- **En caso de tener síntomas compatibles con la enfermedad se les ruega que cancelen sus inscripciones y no acudan al evento.**
 - **Si alguna persona presenta síntomas deberá informada al CO inmediatamente. De este modo el CO podrá informar a las autoridades competentes responsables.**

2. ANTES Y DESPUÉS DE LA LLEGADA A LA INSTALACIÓN:

➤ Antes de la llegada al concurso:

- De acuerdo con los estatutos de EHV-1, es obligatorio utilizar la aplicación móvil **FEI HorseApp** para:
 - Toma y registro de temperatura de los caballos 2 veces al día durante los 10 días previos a la llegada al concurso.
 - Cumplimentar el formulario "Horse Health FEI Self-Certification" para todos los caballos que asistan al evento.
 - **Será necesario comunicar fecha y hora de llegada de los caballos a la instalación al CO con una antelación mínima de 2 días.**



SUNSHINE TOUR

since 1994

- ✓ Se recuerda que deben traer su propio termómetro para la toma de temperatura de los caballos tanto a la llegada como durante el evento (2 veces al día).

➤ Llegada al concurso:

- A su llegada a la instalación los caballos serán ubicados en los boxes asignados por nuestro jefe de cuadras, dónde deberán esperar a que el veterinario responsable realice el examen clínico a los mismos.
- Una vez que el veterinario acredite que los caballos se encuentran en buen estado de salud podrán descargar el material de los camiones y deberán hacer entrega de pasaportes y guías al jefe de cuadras.
- Una vez entregada la documentación, la oficina del concurso tendrá preparados los dorsales de los caballos y podrán pasar a recogerlos.
 - El aforo máximo de la oficina estará limitado en número de personas. Cada secretaria atenderá a una sola persona, por lo que se les recomienda que no vengán en grupos de varias personas.
 - **Aconsejamos sólo venir a la oficina en casos de extrema necesidad e intentar hacer todos los trámites vía telemática (ver punto 4).**
 - *Los jinetes, grooms y acompañantes tendrán sus acreditaciones en la App en formato digital. En caso de que no fuese posible tener la App rogamos nos lo comuniquéis y os haremos entrega de una pulsera a modo de acreditación.*
 - **La acreditación siempre será necesaria para acceder a la zona de cuadras** y por ello rogamos a todos los jinetes que nos envíen los datos personales (dirección, número de DNI o Pasaporte, número de teléfono, dirección de correo electrónico y una fotografía reciente) de todos los miembros del equipo **antes del 25 de septiembre.**
 - **Los dorsales serán proporcionados por el CO y será obligatorio su uso en todo momento. Se mantendrá el mismo número de dorsal durante las 4 semanas del tour.**

8

3. ZONA DE BOXES:

- Recomendamos que todos contribuyan a desinfectar su propia zona de boxes.
- Dispondremos de hidrogel en la entrada a la zona de cuadras y en las zonas de ducha de los caballos.
- La zona de duchas para caballos será desinfectada frecuentemente por nuestro personal y será obligatoria la desinfección de las manos con hidrogel antes del uso de estas.

4. SECRETARÍA:

Se recomienda utilizar la App **“Sunshine Tour Mobile” (disponible para IOS & Android)** para todo lo relacionado con la competición:

- **Acreditación.**
- **Matriculas.**
- **Resultados.**
- **Videos:** a través de la App podréis ver y descargar vuestros vídeos de forma **GRATUITA.**
- Recibiréis **notificaciones** de cualquier cambio en la programación y tendréis disponible toda la información sobre la competición (short program, plano de la instalación, horarios de competición diarios personalizados, etc.)



SUNSHINE TOUR

since 1994

- **Pedidos de suministros** indicando número de box y zona (A o B). Es posible acreditar a vuestros mozos para que puedan realizar los pedidos en vuestro nombre.
- **Live Streaming.** (También disponible en nuestra web www.sunshinetour.net).
- **Contabilidad.** Podrán revisar sus cuentas contables a través de la app y abonarlas mediante transferencia bancaria. Una vez recibamos el comprobante les citaremos para que pasen a retirar la documentación de los caballos y guías de transporte en la oficina del concurso.

Siguiendo con las directrices publicadas en el BOE los pagos deberán realizarse con medios que no supongan contacto físico.

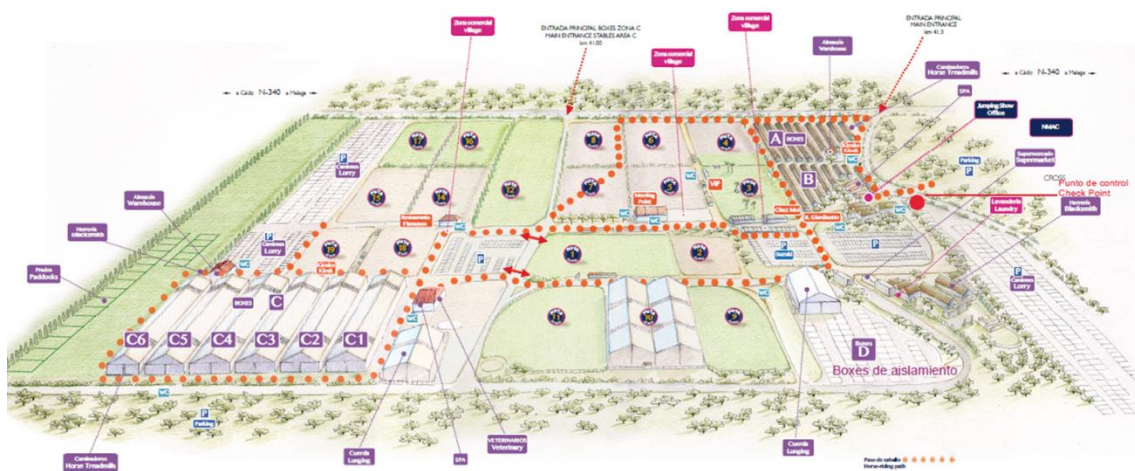
- Para poder solicitar las **guías de transporte** será requisito indispensable hacer entrega de la guía de entrada, así como de la solicitud correspondiente incluyendo todos los datos de la partida con una antelación mínima de 7 días antes de su viaje. El formulario de solicitud estará disponible en la oficina del concurso, así como en la App.

Aconsejamos sólo venir a la oficina en casos de extrema necesidad e intentar hacer todos los trámites vía telemática.

- **Podrán contactar con la oficina del concurso/contabilidad:**
 - **Oficina del concurso/Show Office:** +34 956 447 125 (Ext.1) / +34 649 293 273 (WhatsApp) - sunshinetour@sunshinetour.net
 - **Oficina de contabilidad/Accounting Office:** +34 956 447 125 (Ext.2) / +34 673 35 26 01 (WhatsApp) - contabilidad@sunshinetour.net

5. PISTAS DE ENSAYO:

- Cada pista de competición tendrá su correspondiente pista de ensayo.
- Habrá un control de acceso a las pistas donde solo se permitirán 25 caballos de la prueba que se esté disputando.
- Cada día habrá una pista libre para trabajar.
- De forma adicional se habilitará la pista 10 para dar cuerda cada día hasta las 10.00 a.m.
- A la pista de ensayo podrá acceder tan solo 1 persona por jinete.
- El Comité Organizador se encargará de desinfectar los reparos y de pasar el rastrillo.





SUNSHINE TOUR

since 1994

6. REUNIONES/RESTAURANTES

- **Las fiestas y/o barbacoas están prohibidas en toda la instalación (se impondrán sanciones a todo aquel que incumpla esta norma).**
- **Los bares y restaurantes se regirán por la normativa vigente según el nivel de alerta en Andalucía en el momento de la celebración del evento.**

10

23/08/2021

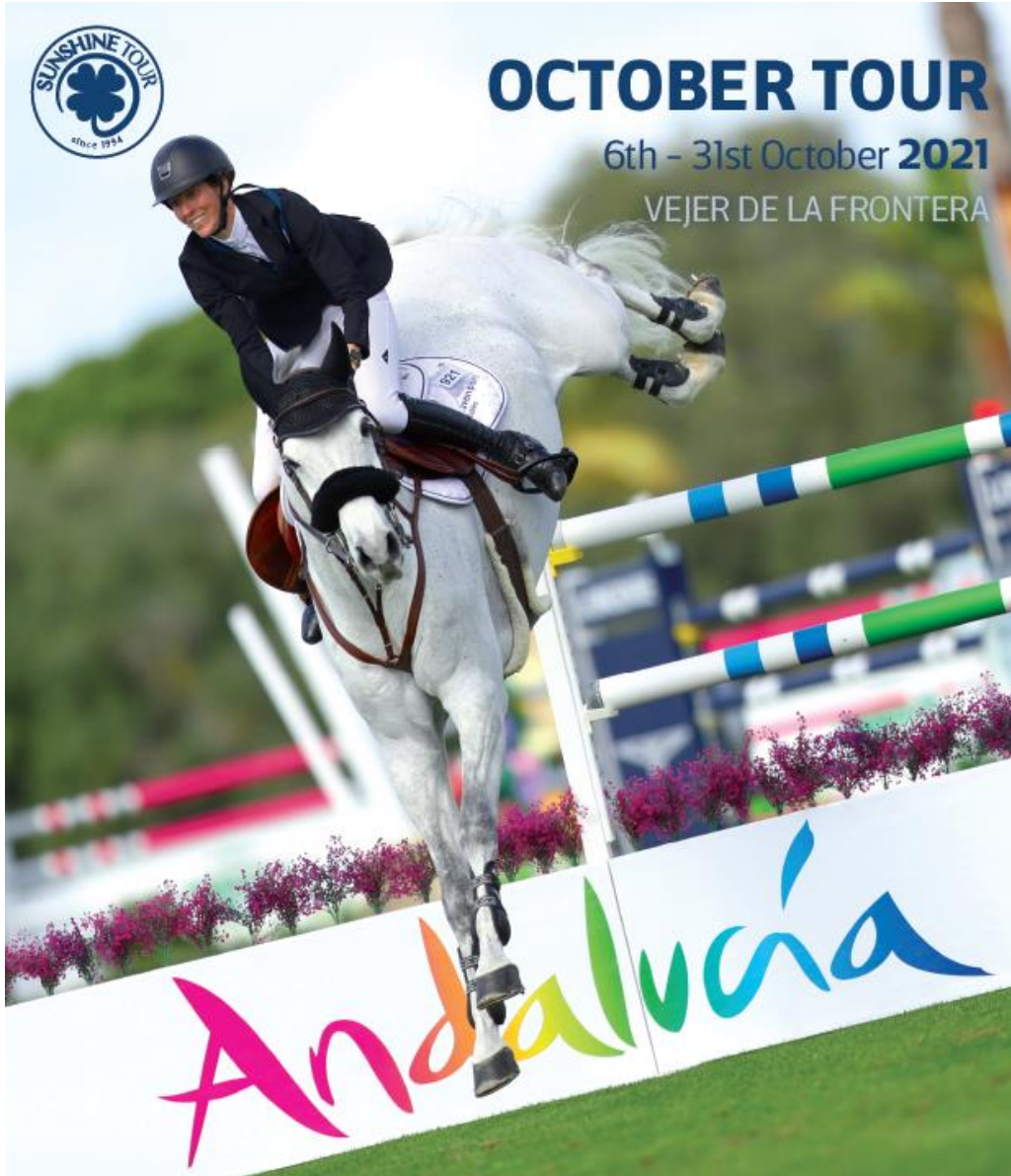


SUNSHINE TOUR

since 1994

EHV-1 Action Protocol and Contingency Plan for the October Tour, Dehesa Montenmedio, 2021

1



Tel: +34 956 447 125 / +34 649 293 273
sunshinetour@sunshinetour.net
www.sunshinetour.net



SUNSHINE TOUR

since 1994

The following **Biosecurity, Action Protocol and Contingency Plans** are set up in order to safeguard the attendees of the next events held at the Sunshine Tour, S.L. Horse numbers have been limited and thanks to the size of the installations as well as the experienced team running them, we are able to meet the conditions set forward by the Federación Ecuestre Internacional (FEI) and the Real Federación Hípica Española (RFHE) to avoid risks associated with the EHV-1.

- **Action Protocol:**

- Arrival at the event.

- During the Event.

- **Contingency Plan:**

- Isolation Zone.

- Access to the Isolation Zone.

- Horse stabling.

- Hospitals/laboratories.

Appendix:

- Installation Plan.



SUNSHINE TOUR

since 1994

1. ACTION PROTOCOL

3

Arrival at the event:

1. **Lorry reception** will take place at the **Control Point** by the **Stable Manager**.
2. **Horses** will be examined by the 'elected' Veterinarian.
 - Lorries will be directed by the Stable Manager, to their assigned stabling where the following checks will be carried out:
 - Horses are correctly placed in their assigned stables.
 - Horse **microchips** will be read and checked with their Passports.
 - The passports will be validated, FEI, LICs, DIE & Tarjeta Validación Deportiva, along with any other incidental documentation.
 - Vaccine dates will be checked to ensure each horse is up to date with obligatory vaccinations such as Equine Flu.
 - Clinical horse examination:
 - Each horse will have its temperature taken by the rider/groom and this will be recorded by the elected veterinary, who will note down the temperature in the FEI HorseApp.
 - Heart and breathing rates will be recorded along with the presence of any other symptoms, such as cough, lymph node infarction, etc.
 - If the horse's temperature is over 38.5°C, taking into account ambient temperatures and the conditions during transit to the installations, the horse will be rechecked after one hour of rest. If the horse then tests as equal to or below 38.5°C the horse will be accepted and may be installed in its assigned stable.
 - In the case that the horse's temperature continues to be above 38.5°C the **Contingency Plan** will be put in to operation. Firstly, the horse and all of the horses travelling on the same vehicle (same origin), will be moved to the Isolation Zone. The Contingency plan is outlined in the second part of this document.
 - If the horse's temperature is normal on the following day and it is verified that the horse does not present any other infectious symptoms, the animal will be transferred to its assigned stable.
3. The horse's **passport** and health papers, will be collected by the stable manager and delivered to the Show Office.

NOTE: The responsible veterinarian will have both disposable equipment ready to examine groups of horses (from the same origin / transport vehicle), as well using and



SUNSHINE TOUR

since 1994

carrying out thorough cleaning and disinfection of all standard medical tools before use between horses (eg: thermometer, stethoscope ...)

► [Horse Arrival procedure.pdf \(fei.org\)](#)

4

During the event:

1. Stable areas:

- ✓ Horses will be stabled in open air, in fixed boxes with a height of 2.30m permitting good ventilation in the stables. (Stable areas; A and B).
- ✓ Horses will be assigned boxes corresponding to their zone of origin, transport / previous stabling etc; but with sufficient separation between one and another.
- ✓ All stables will be cleaned, disinfected and sealed before the arrival of the horses to the installations.
- ✓ Hydrogel is available at the entrances to the stabling areas and horse showering areas.
- ✓ Every evening, shared areas, the horse showers and the walkways in the stabling areas will be disinfected by our stable staff.

2. The temperature of each horse must be taken twice daily (morning and evening) by the rider or groom and must be noted down on the Temperature Control Sheet which will be provided by the Organising Committee (OC) for each horse participating in the event. The temperature control sheet must be visible and placed in the front part of each stable, for easy recognition and verification of data by veterinarians and all other officials.

3. In the case of suspicious symptoms arising during the event (fever etc):

- ✓ The horse will be immediately isolated to a designated Isolation box.
- ✓ Any horses in its contact group will be clinically contained and placed under observation.
- ✓ The Autoridad Sanitaria Local (Local Health Authority) and the Comité Técnico Nacional Veterinario de la RFHE (National Technical Committee) will be immediately notified by the OC and the designated Official National Veterinarian.
- ✓ Relevant procedures will be taken and the Contingency Plan brought into action.



SUNSHINE TOUR

since 1994

2. CONTINGENCY PLAN

5

1. Isolation Zone:

- ✓ There will be an Isolation Zone which will be more than 50m away from the main stabling area (Stable area D).
- ✓ Stables in this area will be carefully cleaned and disinfected constantly by our staff.
- ✓ There will be a sufficient number of boxes available proportional to the number of horses attending the event. A minimum of 3m will be kept between the rows of stables.
- ✓ There will be a box with hoist available in the isolation area.
- ✓ These stables have good ventilation channels.
- ✓ Pets are prohibited in the isolation area.

2. Access to the Isolation Zone:

Only those in charge of the care of an isolated horse may enter the Isolation Zone.

3. Horse Stabling:

- ✓ Horses that travelled together will be placed together in the same group but with sufficient separation between each of them.
- ✓ Each horse will have a separate tack area specifically for that individual horse, to prevent cross contamination of other horses by sharing of materials.
- ✓ Temperature Control Sheets must be visible, placed on the front of each stable charts. Rectal temperature should be taken twice each day, morning and evening
- ✓ Hand disinfection points will be placed at the entrance / exit of the Isolation Zone and there will be an area to change clothes and shoes before exiting the Zone.
- ✓ There will be a plan of the Isolation Zone area which will be filled in to show each horse's details, any extra data and contact information.

4. Care and Monitoring of Isolated horses:

- a) Rectal temperature should be taken twice daily during isolation by the person responsible for each horse's care. It is important to assess the general appearance of the horse (discharge from



SUNSHINE TOUR

since 1994

nostrils and eyes, any changes in the consistency and number of stools) and its wellbeing noted, any changes in water or feed consumption, how the horse is moving etc. If the horse presents any sign of symptoms the vet should be immediately called to attend.

- b) There will be a 24hr **treatment clinic** on call at the installations.
- c) In the case that a horse needs to be transported to the hospital we have a **horse ambulance solely reserved for the transport**.
- d) **PPE:** Specific equipment will be used for each horse in the isolation area. All equipment that is shared such as thermometers etc, will be disinfected between each and every horse. Materials that cannot be disinfected (brushes and sponges etc) will be for individual use with each horse.
Footwear and clothing, should be washed and disinfected after use with each horse, as well as coveralls and disposable gloves which should be carefully disposed of after each use.

6

5. Hospitals /Laboratories:

- ✓ **Hospital Veterinario de Referencia** → **Hospital de Referencia la Equina:** Apdo 110, C. Martagina, Km 1, 29692 Manilva, Málaga
- ✓ **Hospital de Referencia para casos de EHV-1** → **Hospital Clínico Veterinario UCO:** Campus Universitario de Rabanales. Ctra. Nacional IV-A, Km 396, 14014 Córdoba
- ✓ **Laboratorio EXOPOL** → Mailing of samples with PCR results returned in 24hrs.

▶ [EHV-1 - List of Laboratories 2021.pdf \(fei.org\)](#)

12/08//2021

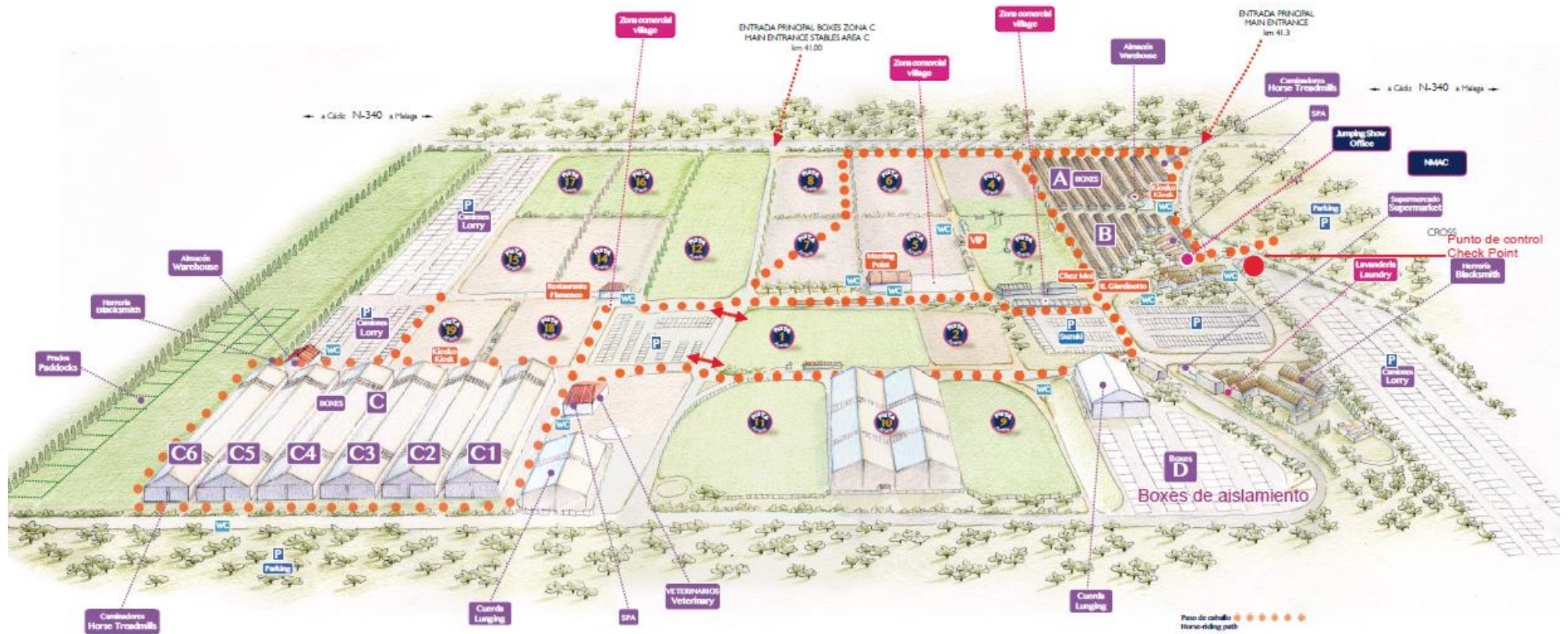


SUNSHINE TOUR

since 1994

APPENDIX:

INSTALLATION PLAN





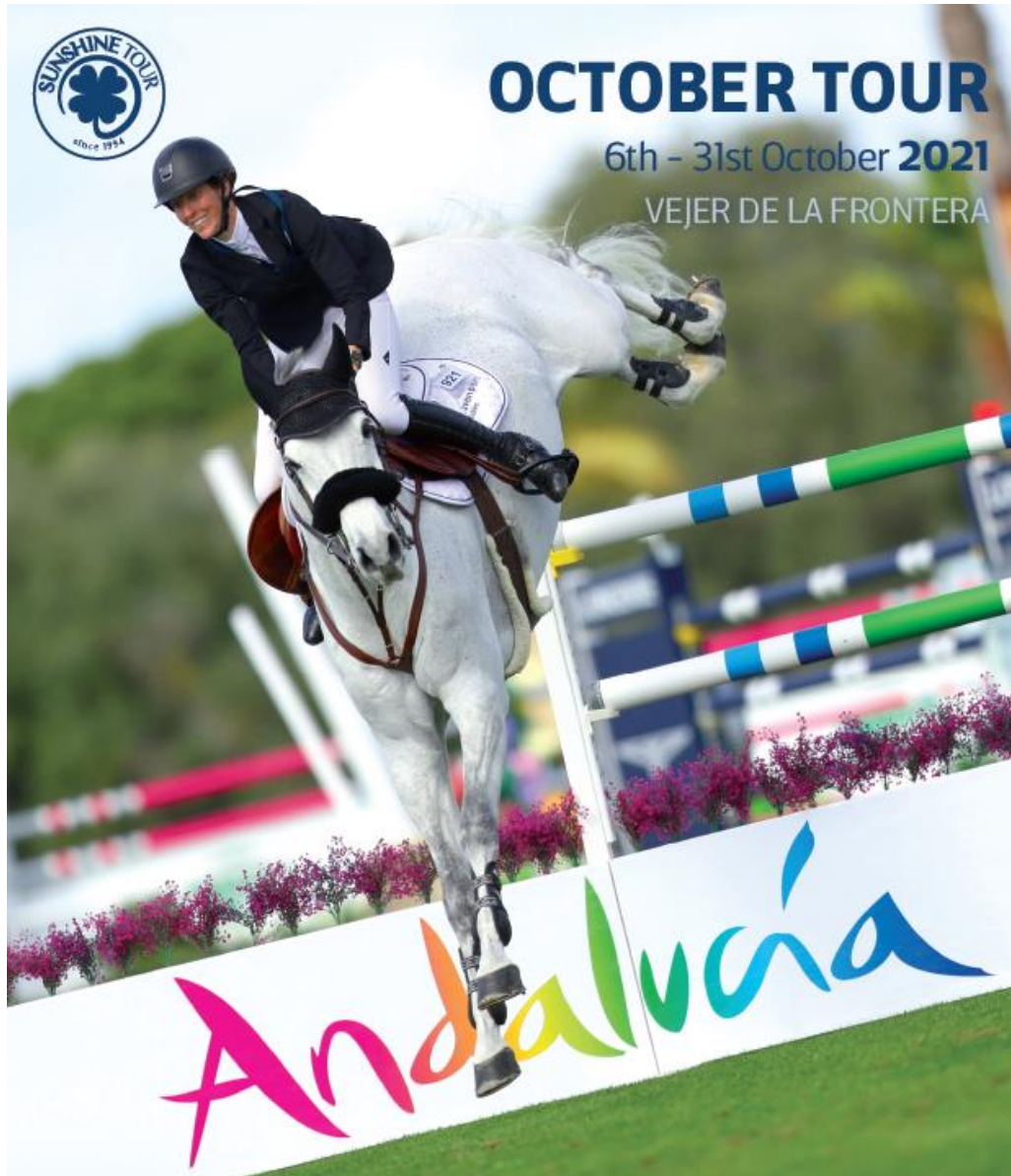
SUNSHINE TOUR

since 1994

Protocolo de Actuación y Plan de Contingencia EHV-1

October Tour Dehesa Montenmedio 2021

1



Tel: +34 956 447 125 / +34 649 293 273
sunshinetour@sunshinetour.net
www.sunshinetour.net



SUNSHINE TOUR

since 1994

El siguiente **Protocolo de Actuación y Plan de Contingencia en materia de Bioseguridad** ha sido elaborado para que Circuito Hípico del Sol, S.L. celebre sus próximos concursos de forma segura. Hemos limitado el número de caballos y gracias la dimensión de la instalación, así como a la experiencia de nuestro equipo se proporcionan las adecuadas condiciones para el desarrollo de la competición siguiendo con las directrices marcadas por la Federación Ecuestre Internacional (FEI) y la Real Federación Hípica Española (RFHE) para evitar los riesgos asociados con el EHV-1.

2

1. Protocolo de actuación:

Llegada al concurso.

Durante el concurso.

2. Plan de Contingencia:

Zona de aislamiento.

Acceso a la unidad de aislamiento.

Estabulación de caballos.

Hospitales/laboratorios.

Anexo:

I. Plano de la instalación.



SUNSHINE TOUR

since 1994

1.PROTOCOLO DE ACTUACIÓN

Llegada al concurso:

3

1. **Recepción de camiones** en el **punto de control** por parte del jefe de cuadras.
2. **Examen de los caballos a la llegada** por parte del veterinario responsable.
 - Siguiendo las indicaciones del jefe de cuadras los camiones deberán dirigirse hasta los boxes asignados donde se les realizará el correspondiente examen:
 - a) Los caballos serán ubicados en los boxes correspondientes.
 - b) Verificación de la identidad del caballo a través de lectura de microchip e identidad en su Pasaporte.
Comprobación de validez de pasaporte FEI, LICs, DIE + Tarjeta Validación Deportiva y otras incidencias documentales.
Comprobación de las pautas de vacunación obligatorias contra influenza equina.
 - c) Examen clínico de los caballos:
 - Toma de temperatura por parte del mozo/jinete y registro de la misma por el veterinario responsable en la FEI HorseApp.
 - Además se examinarán frecuencia cardiaca, frecuencia respiratoria y registro de cualquier incidencia (tos, infartación ganglionar, etc).
 - Si la temperatura del caballo es superior a 38,5°C, teniendo en cuenta que una temperatura alta es compatible con las circunstancias del viaje, se someterá al caballo a una segunda toma de temperatura tras 1 hora de reposo. Si esta segunda toma de temperatura es inferior o igual a 38,5°C se aceptará al caballo y podrán instalarse en la zona asignada.
 - En caso de que la temperatura siga siendo superior a 38.5°C se procederá a trasladar al animal, así como al resto de caballos que lo acompañan en el vehículo de transporte hasta la zona de aislamiento y se pondrá en marcha el correspondiente Plan de Contingencia que se detalla en el segundo punto de este documento.
 - En caso de que la temperatura sea normal al día siguiente y se compruebe que el caballo no presenta ninguna otra sintomatología infecciosa se trasladará al animal a la zona de boxes asignada.
3. Recogida de los **pasaportes de los caballos** junto con sus guías sanitarias por parte del jefe de cuadras para entregarlas en la oficina del concurso.

NOTA: El veterinario responsable dispondrá de equipos desechables para el examen entre grupos de caballos (mismo origen / vehículo de transporte), procediendo a la



SUNSHINE TOUR

since 1994

limpieza y desinfección de los utensilios de trabajo entre caballos (termómetro, fonendoscopio ...)

► [Horse Arrival procedure.pdf \(fei.org\)](#)

4

Durante el concurso:

1. Zona de cuadras:

- ✓ Los caballos serán estabulados en boxes fijos al aire libre de altura 2,30m, lo que permite una buena ventilación en la zona de cuadras (Zona de boxes A y B).
- ✓ Los caballos se distribuirán por zonas de origen en los boxes correspondientes, pero con la consiguiente separación entre unos y otros
- ✓ Los boxes serán desinfectados, limpiados y sellados antes de la llegada de los caballos a la instalación.
- ✓ Dispondremos de hidrogel en la entrada a la zona de cuadras y en las zonas de ducha de los caballos.
- ✓ La zona de duchas para caballos, así como los pasillos de la zona de cuadras serán desinfectadas cada noche por nuestro personal.

2. Toma de temperatura 2 veces al día (mañana y tarde) por parte del jinete/mozo y registro en la hoja de control de temperatura que será proporcionada por el CO a cada caballo participante del evento.

La hoja de control de temperaturas deberá dispuesta en la parte delantera del box para su fácil reconocimiento y comprobación de datos por veterinarios, comisarios y resto de oficiales.

3. Ante la presencia de una sospecha durante el transcurso del concurso (fiebre, etc):

- ✓ Aislamiento de forma inmediata del animal en el box de aislamiento designado.
- ✓ Contención clínica y delimitación del grupo de caballos de contacto.
- ✓ Comunicación inmediata a la Autoridad Sanitaria Local y al Comité Técnico Nacional Veterinario de la RFHE por parte del CO y del Veterinario Oficial Nacional designado.
- ✓ Toma de medidas y aplicación del plan de contingencia.



SUNSHINE TOUR

since 1994

2. PLAN DE CONTINGENCIA

5

1. Zona de aislamiento:

- ✓ Existirá una zona de aislamiento ubicada a más de 50 metros de la zona de cuadras (Zona de boxes D).
- ✓ Los boxes de la zona de aislamiento serán limpiados y desinfectados cuidadosamente y de forma constante por nuestro personal.
- ✓ Se dispondrá de un número de boxes suficiente y proporcional al número de caballos participantes. Se guardará una distancia mínima de 3 metros entre las líneas de los boxes.
- ✓ Se dispondrá de un box con polipasto en la zona de aislamiento.
- ✓ Existirán buenos canales de ventilación en los boxes.
- ✓ Se prohíbe el acceso de mascotas a la zona de aislamiento.

2. Acceso a la unidad de aislamiento:

Sólo podrán acceder al recinto las personas que estén al cuidado de los caballos aislados.

3. Estabulación de caballos:

- ✓ Estabulación conjunta de caballos que viajen en el mismo grupo, pero con la consiguiente separación entre unos y otros.
- ✓ Establecimiento de un guarnés específico del material de cada caballo para que no se junte con el del resto de caballos.
- ✓ Hoja de temperatura fuera de cada box para el registro de temperaturas rectales 2 veces/día.
- ✓ Puntos de desinfección de manos a la entrada/salida de la zona de aislamiento. Además, se habilitará una zona para cambiarse de ropa y calzado a la salida.
- ✓ Se elaborará un plano con la ubicación y datos de interés/contacto de los caballos en la zona de aislamiento.

4. Cuidado y seguimiento de caballos en aislamiento:

- a) La temperatura rectal de cada caballo deberá tomarse y registrarse dos veces al día durante el aislamiento por parte de la persona responsable de cada caballo. Además, será importante evaluar la apariencia general (secreción de ollares y ojos, cambios en la consistencia y número de heces), controlar la cantidad de agua y comida que consume el caballo y controlar como se



SUNSHINE TOUR

since 1994

mueve. Si el caballo presenta algún tipo de sintomatología deberá ser atendido por un veterinario.

- b) Habrá una **clínica de tratamiento** en la instalación operativa durante las 24 horas del día.
- c) En caso de que sea necesario llevar a algún caballo al Hospital dispondremos de **ambulancia exclusiva para realizar los traslados**.
- d) **EPI'S**: Se usará un equipo específico para cada caballo en la zona de aislamiento. Los equipos que sean de uso compartido, como, por ejemplo, ramales o termómetros, serán desinfectados entre caballo y caballo y aquel material que no pueda desinfectarse (cepillos y esponjas) será de uso exclusivo.

El calzado y la ropa, por ejemplo, deberá lavarse y desinfectarse después de cada uso, así como los monos y guantes desechables que deberán desecharse cuidadosamente después de cada uso.

5. Hospitales/Laboratorios:

- ✓ **Hospital Veterinario de Referencia → Hospital de Referencia la Equina:**
Apdo 110, C. Martagina, Km 1, 29692 Manilva, Málaga
- ✓ **Hospital de Referencia para casos de EHV-1 → Hospital Clínico Veterinario UCO:** Campus Universitario de Rabanales. Ctra. Nacional IV-A, Km 396, 14014 Córdoba
- ✓ **Laboratorio EXOPOL** para el envío de muestras PCR y obtención de los resultados en 24 horas.
- ✓
 - ▶ [EHV-1 - List of Laboratories 2021.pdf \(fei.org\)](#)

12/08//2021

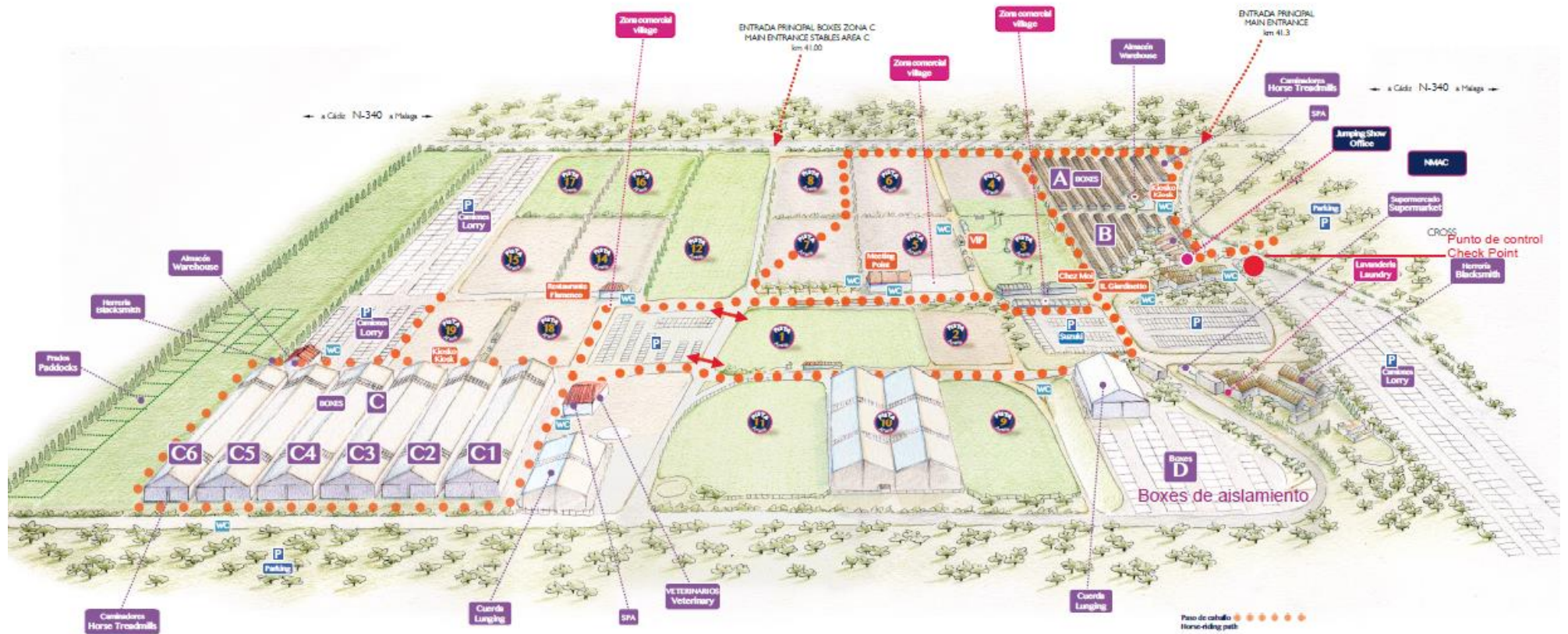


SUNSHINE TOUR

since 1994

ANEXO I:

PLANO DE LA INSTALACIÓN



I. DENOMINATION OF THE EVENT

Venue: Vejer de la Frontera - October Tour Dehesa Montenmedio 2021

Date: Week 1: CSI2*/CSIYH* 14th – 17th October 2021

Week 2: CSI3*/CSIYH* 21st – 24th October 2021 **NF:** **ESP**

Indoor:

Outdoor:

EVENT CATEGORIES:

- | | | | | |
|---------------------------------|----------------------------------|---|-----------------------------------|-----------------------------------|
| CSIO5* <input type="checkbox"/> | CSI5*-W <input type="checkbox"/> | CSI5* <input type="checkbox"/> | CSIU25-A <input type="checkbox"/> | CSIU25-B <input type="checkbox"/> |
| CSIO4* <input type="checkbox"/> | CSI4*-W <input type="checkbox"/> | CSI4* <input type="checkbox"/> | CSIY-A <input type="checkbox"/> | CSIY-B <input type="checkbox"/> |
| CSIO3* <input type="checkbox"/> | CSI3*-W <input type="checkbox"/> | CSI3* <input checked="" type="checkbox"/> | CSIJ-A <input type="checkbox"/> | CSIJ-B <input type="checkbox"/> |
| CSIO2* <input type="checkbox"/> | CSI2*-W <input type="checkbox"/> | CSI2* <input checked="" type="checkbox"/> | CSIch-A <input type="checkbox"/> | CSIch-B <input type="checkbox"/> |
| CSIO1* <input type="checkbox"/> | CSI1*-W <input type="checkbox"/> | CSI1* <input type="checkbox"/> | CSIV-A <input type="checkbox"/> | CSIV-B <input type="checkbox"/> |
| CSIOY <input type="checkbox"/> | | CSIL1* <input type="checkbox"/> | CSIAm-A <input type="checkbox"/> | CSIAm-B <input type="checkbox"/> |
| CSIOJ <input type="checkbox"/> | | CSIYH2* <input type="checkbox"/> | CSIP <input type="checkbox"/> | |
| CSIOP <input type="checkbox"/> | | CSIYH1* <input checked="" type="checkbox"/> | | |
| CSIOCh <input type="checkbox"/> | | | | |

Championship

Games

II. GENERAL CONDITIONS

- FEI Statutes, 24th edition, effective 19 November 2019
- FEI General Regulations, 24th edition, 1st January 2020, updates effective 1st January 2021
- FEI Veterinary Regulations, 14th edition, 1 January 2018, updates effective 1st January 2021
- The Jumping Rules and its Annexes, 26th edition 1 January 2018, updates effective 1 January 2021
- <https://inside.fei.org/fei/regulations/jumping>
- CSI/CSIO Prize Money requirements 2020 – To be applied also for 2021
<https://inside.fei.org/sites/default/files/Final%20CSIs-CSIOs%20-%202020.pdf>
- Longines Rankings – Groups Categories 2020 – To be applied also for 2021
<https://inside.fei.org/sites/default/files/Final%20Longines%20Ranking%20Groups%20-%202020.pdf>
- Equine Anti-Doping and Controlled Medication Regulations (EADCMR), 3rd Edition, effective 1st January 2021
- FEI Anti-Doping Rules for Human Athletes (ADRHA), based upon the 2021 WADA Code, effective 1st January 2021
- The FEI Policy for Enhanced Competition Safety during the Covid-19 Pandemic, effective as of 1 July 2020 (updated 12 October 2020) and until further notice
- All subsequent published revisions/updates, the provisions of which will take precedence.

THE ANNEXE(S) IS/ARE PART OF THIS APPROVED AND SIGNED SCHEDULE AND MUST BE DISTRIBUTED TO ALL OFFICIALS AND NFs AND IS AVAILABLE TO OTHERS UPON REQUEST

Approved by the FEI, Lausanne, on 02/09/2021, modified on 03/09/2021, 07/09/2021, 13/09/2021



Marco Fusté
Jumping Director

NB: No modifications to the approved Schedule will be accepted less than two weeks prior to the event. Additionally, no change may be made to a Longines Ranking competition once the schedule has been approved. Prizes in kind, to be accepted as prize money to count for Longines Ranking competitions and total event prize money, must be easily convertible into cash (GRs Art. 127).

TABLE OF CONTENTS

I.	DENOMINATION OF THE EVENT	1
II.	GENERAL CONDITIONS	1
III.	THE FEI CODE OF CONDUCT FOR THE WELFARE OF THE HORSE	3
IV.	GENERAL INFORMATION	4
	1. ORGANISER	4
	2. ORGANISING COMMITTEE	4
	3. EVENT DIRECTOR	4
	4. STABLE MANAGER	5
	5. ANNOUNCER	5
V.	OFFICIALS	6
VI.	INVITATIONS	8
	1. GENERAL	8
VII.	ENTRIES.....	11
	1. ENTRY DATES AND ENTRY FEES	11
	2. OTHER FEES.....	12
	3. NO-SHOWS/LATE WITHDRAWALS	13
VIII.	TIMETABLE.....	14
IX.	COMPETITION DETAIL.....	18
X.	FACILITIES OFFERED.....	40
	1. ATHLETES	40
	2. GROOMS	40
XI.	LOGISTICAL/ADMINISTRATIVE/TECHNICAL INFORMATION	41
	1. DRAW	41
	2. COMPETITION ARENA(S).....	41
	3. PRACTICE ARENA(S)	41
	4. STABLES	41
	5. SAFETY CUPS	41
	6. TIMING DEVICE	41
	7. SCORING/TIMING PROVIDER	41
	8. OTHER TECHNOLOGY/SERVICE PROVIDER(S)	41
	9. PRIZE GIVING CEREMONY	42
	10. ADVERTISING ON ATHLETES AND HORSES.....	42
	11. TICKETING.....	42
	12. BETTING.....	42
	13. TRANSPORT REIMBURSEMENT HORSES / PONIES.....	42
	14. WELCOME	42
	15. LOCAL TRANSPORTATION - ARRANGEMENTS FROM HOTEL TO SHOWGROUNDS	42
	16. ENTRY RIGHT TO SHOWGROUNDS/ACCREDITED PERSONS.....	42
	17. SUSTAINABILITY	43
XII.	VETERINARY MATTERS.....	44
	1. CUSTOMS FORMALITIES	44
	2. HEALTH REQUIREMENTS	44
	3. NATIONAL REQUIREMENTS	44
	4. PONIES	45
	5. INJURY SURVEILLANCE.....	45
	6. TRANSPORT OF HORSES.....	45
	7. VENUE ARRIVAL INFORMATION & FITNESS TO COMPETE	45
	8. EQUINE ANTI-DOPING AND CONTROLLED MEDICATION PROGRAMME (EADCMP). FEI VETERINARY REGULATIONS,	

CHAPTER VII	46
XIII. HUMAN ANTI-DOPING	48
XIV. ADDITIONAL INFORMATION	48
1. THE FEI POLICY FOR ENHANCED COMPETITION SAFETY DURING THE COVID-19 PANDEMIC.....	48
2. INSURANCES AND NATIONAL REQUIREMENTS.....	49
3. PROTESTS/APPEALS	50
4. SCHOOLING DURING COMPETITIONS	50
5. STEWARDING.....	50
6. DISPUTES	51
7. MODIFICATION TO SCHEDULE	51
8. ADDITIONAL INFORMATION FROM THE OC.....	51
9. PRIZE MONEY DISTRIBUTION	53
10. MAXIMUM NUMBER OF STARTERS PER COMPETITION	54
11. GLOSSARY	55
XV. ANNEXES.....	57

III. THE FEI CODE OF CONDUCT FOR THE WELFARE OF THE HORSE

The Fédération Equestre Internationale (FEI) expects all those involved in international equestrian sport to adhere to the FEI's Code of Conduct and to acknowledge and accept that at all times the welfare of the horse must be paramount and must never be subordinated to competitive or commercial influences.

1. At all stages during the preparation and training of competition horses, welfare must take precedence over all other demands. This includes good horse management, training methods, farriery and tack, and transportation.
2. Horses and Athletes must be fit, competent and in good health before they are allowed to compete. This encompasses medication use, surgical procedures that threaten welfare or safety, pregnancy in mares and the misuse of aids.
3. Events must not prejudice horse welfare. This involves paying careful attention to the competition areas, ground surfaces, weather conditions, stabling, site safety and fitness of the horse for onward travel after the event.
4. Every effort must be made to ensure that horses receive proper attention after they have competed and that they are treated humanely when their competition careers are over. This covers proper veterinary care, competition injuries, euthanasia and retirement.
5. The FEI urges all involved with the sport to attain the highest levels of education in their areas of expertise.

The **Long version** of this Code can be obtained from the Fédération Equestre Internationale, HM King Hussein I Building, Chemin de la Joliette 8, 1006 Lausanne, Switzerland. Telephone: +41 21 310 47 47. The Code is available in English. The Code is also available on the FEI's website: <http://inside.fei.org/>.

IV. GENERAL INFORMATION

1. ORGANISER

Name: CIRCUITO HÍPICO DEL SOL, S.L.
Address: Dehesa Montenmedio. Carretera Nacional 340, Km.41.3 11150 Vejer de la Frontera (Cádiz-Spain)
Telephone: +34 956 447 125 / +34 649 293 273
Fax:
Email: sunshinetour@sunshinetour.net
Website: www.sunshinetour.net

Contact Details Show Ground:

Address: Dehesa Montenmedio. Carretera Nacional 340, Km.41.3 11150 Vejer de la Frontera (Cádiz-Spain)

CODIGO DE EXPLOTACION O REGA: ES 110390000780

Telephone: +34 956 447 125 / +34 649 293 273

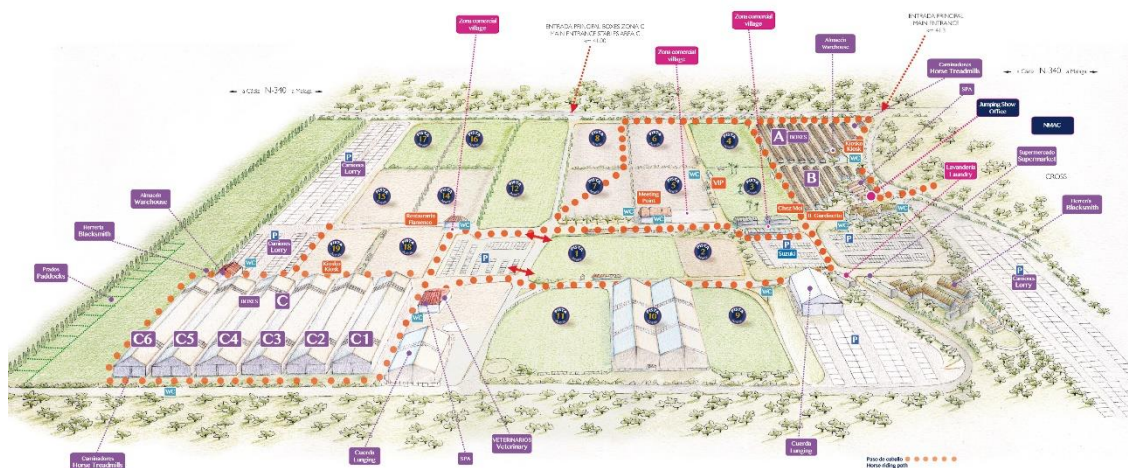
GPS Coordinates: Long 36.15 Lat -5.54 (Sunshine Tour)

Google Maps: Sunshine Tour - Circuito Hípico del Sol

Accessibility details (directions by road, nearest airport / train station):

The venue is situated between Km. 41 to 42.5 of National Road 340 (E-5);

- Main entrance for trucks and participants is at Km 41.4.



Nearest International Airports: Jerez de la Frontera (85 Km); Gibraltar (84 Km); Sevilla (160Km) & Málaga (195Km).

Nearest Train Station: San Fernando-Bahía Sur (49 Km).

2. ORGANISING COMMITTEE

Honorary President:
President of the Event: Mr. Antonio Blázquez Marín
Show Secretary: Mrs. Begoña Quirós
Press Officer: Mrs. Patricia Valdés

3. EVENT DIRECTOR

Name: Mrs. Teresa Blázquez Abascal

Address: Carretera Nacional 340, Km.41.3 11150 Vejer de la Frontera
(Cádiz-Spain)
Telephone: +34 956 447 125
Mobile: +34 649 293 273
Fax:
Email: tblazquez@sunshinetour.net

4. STABLE MANAGER

Name: Mr. Juan Antonio Naveda Braza
Telephone: +34 956 447 125
Email: sunshinetour@sunshinetour.net

5. ANNOUNCER

Name: Sunshine Tour - Circuito Hípico del Sol
Email: sunshinetour@sunshinetour.net

FEI APPROVED SCHEDULE



Vejer de la Frontera (ESP) 14-17 / 21-24 October 2021

V. OFFICIALS

* Compulsory

In case there are several categories and officials are not the same, please complete an additional chart per category.

** National Judges may no longer be appointed as Ground Jury members at Events of this category, and may only officiate on the Ground Jury at CSI1*/CSIYH1* and CSIY/J/Ch/V/Am Cat. B Events.

Ref.	Panel	Function	FEI ID	Name	NF	Level	E-mail & Mobile
1	Ground Jury	Ground Jury President	10051502	Mr. Francisco Captivo (W1)	POR	3*	fcaptivo@gmail.com +351967059559
		Ground Jury President	10077746	Mr. Manuel Carvalho Martins (W2)	POR	3*	manuelcmartins13@gmail.com
		Ground Jury Member	10052326	Mr. Joaquin Medina García (W1+W2)	ESP	2*	joaquinmedinahipica@gmail.com
		Ground Jury Member	10051502	Mr. Francisco Captivo (W2)	POR	3*	fcaptivo@gmail.com
		Ground Jury Member	10147729	Mr. Luis Almendros Fernández (W1 + W2)	ESP	1*	almendros50@gmail.com
		Ground Jury Member		Mr. Pilar Vázquez Jiménez (W1+W2)	ESP	NAT	pilarvazquez@fah.es
2	Foreign Judge	Foreign Judge	10077746	Mr. Manuel Carvalho Martins (W1)	POR	3*	manuelcmartins13@gmail.com
			10101586	Mary (Dineen) McGraw (W2)	IRL	3*	Marymcgraw1005@gmail.com
3		Foreign Technical Delegate					
4	Course Designer	Course Designer CSI2* W1	10174763	Mr. Marcos Núñez García-Delgado	ESP	2*	marcosngd@hotmail.com +34 608 41 20 14
		Course Designer CSI3* W2	10009945	Mr. Cedric Longis	FRA	3*	cedriclongis@icloud.com +33 6 58 12 97 11
		Assistant Course Designer	10174763	Mr. Marcos Núñez García-Delgado (W2)	ESP	2*	marcosngd@hotmail.com
		Assistant Course Designer	10049471	Mr. Javier Trenor (W1+W2)	ESP	4*	chatrenor@hotmail.com
		Assistant Course Designer	10094814	Mr. Luis Jesús Gonzalez Molina (W1+W2)	ESP	NAT	gonzalezmolinaluis@gmail.com
5	Chief Steward	Chief Steward		Mrs. Auxiliadora Carrión Lojo	ESP	3*	carrionauxi@gmail.com +34 607 920 322
6	Foreign Steward	Foreign Steward					
7	Assistant Steward	Assistant Steward	10108054	Mrs. Sara López Carrión	ESP	2*	saritadacai@hotmail.com
		Assistant Steward	10108049	Mr. Javier Freire Lacave	ESP	2*	javi_cbc@hotmail.com
		Assistant Steward	10108048	Mrs. Sara de la Torre	ESP	2*	storredel1@gmail.com
		Assistant Steward	10106838	Mr. François Pfyffer	SUI	2*	slidingmotion@gmail.com
		Assistant Steward	10108053	Mrs. Mónica Llach Moreno	ESP	2*	segurocaballo@hotmail.es

FEI APPROVED SCHEDULE



Vejer de la Frontera (ESP) 14-17 / 21-24 October 2021

8	FEI Veterinary Delegate	FEI Foreign Veterinary Delegate 14-17 October	10051299	Mrs. Manuela Pigato	ITA	3	manuelapigato@libero.it
		FEI Foreign Veterinary Delegate 21-24 October	10051112	Mr. Francisco Camacho	POR	2	FEI10051112@gmail.com
		FEI Veterinary Delegate	10080996	Mrs. Eva Imaz Ceca	ESP		letonic2@hotmail.com +34 606 54 73 86
9	Veterinary Service Manager / Treating Veterinarian	Veterinary Service Manager	10095054	Mrs. Isabel Cienfuegos Marco	ESP		isabelcienfuegosm@hotmail.com +34 626 900 068
		FEI Permitted Treating Veterinarian	10095054	Mrs. Isabel Cienfuegos Marco	ESP		isabelcienfuegosm@hotmail.com +34 626 900 068
10	Medical Doctor	Medical Doctor		Ambulancias Barbate	ESP		+34 956 447 125
11	Farrier	Farrier		Mr. Julio Guisado Rawas	ESP		+34 666 430 800

Please note that the schedule has been approved under the provision that all appointed Officials have successfully passed the on-line FEI Competency Evaluation Test.

VI. INVITATIONS

1. GENERAL

Horses entered in one CSI star level/category may not enter another CSI star level/category at the same Event.

Horses may take part in national Competitions and international Competitions at the same Event only under the following conditions:

- Horses may take part in national Events up to two hours prior to the start of the international Event's Horse Inspection;
- If the national Event includes Competitions after the international Event ends, either on the same day or on the following day(s), horses having taken part in the international Event may take part in national Competitions only, following the conclusion of the international Event.

Invitations

For all Events at which the CSI Invitation Rules apply, a certain percentage of Athletes must be invited in descending order of the Longines Ranking, a certain percentage of Athletes will be home Athletes selected by the host NF and a certain percentage will be Athletes invited by the Organising Committee (OC); the percentages for each invitation group are established for each star level as follows:

Event Level	Athletes from the Longines Ranking	Athletes selected by the host NF	OC Invitations
CSI5*	60%	20%	20%
CSI4*	50%	25%	25%
CSI3*	40%	30%	30%
CSI2*	30%	30%	40%
CSI2* Open , option with no Longines Ranking Competitions if the number of invited Athletes is restricted	0%	20%	80%
CSI2* Open , option with no Longines Ranking Competitions if the number of invited Athletes is unrestricted	N/A, CSI Invitation Rules do not apply to CSI Events at which the number of Athletes invited is not restricted.		

If an OC decides not to limit the number of Athletes, no limit can be set on the maximum number of horses and all entries will therefore automatically be accepted.

CSI2* star level:

Maximum number of Athletes to be invited: Unlimited
 Maximum number of Horses that may be entered: Unlimited
 Maximum number of Horses per Athlete: 12

CSI3* star level:

Maximum number of Athletes to be invited: Unlimited
 Maximum number of Horses that may be entered: Unlimited

Maximum number of Horses per Athlete: 12

FEI Wild Cards:

CSI5*: 1

CSI4*/CSI3*/CSI2*: 2

Connected Events:

There are no connected Events in this show

Section 1: Compulsory Invitations

Athletes can choose Events for which they wish to receive an information from the Monday eight weeks prior to the week of the Event until midnight GMT on the 4th Sunday prior to the Event.

Section 2: Home Athletes selected by the host NF

Entries for home Athletes in this section must be made through the FEI Entry System between the Monday eight weeks prior to the week of the Event until midnight GMT on the 3rd Wednesday prior to the week of the Event.

Section 3: OC Invitations

Entries in the OC Invitation Quota can be made in the FEI Entry System from the Monday eight weeks prior to the week of the Event up until the closing date for regular entries (the closing date for regular entries cannot be earlier than the 3rd Thursday prior to the week of the Event, and no later than four days prior to the Event) as indicated in the Schedule.

Events for which the Schedule states that overseas air transportation of Horses will be provided/organised by the OC are, for logistical reasons, authorised to establish the closing date for entries at the earliest on the 5th Sunday prior to the event.

For all other Events, please use the template below:

CSIYH* (5,6 & 7 y/o):

NF invited : All
Total Number of athletes : unlimited
Number of horses per athlete: **9 horses/rider (max.3 per age)**

CSI2/3*:

NF invited : All
Total Number of athletes : unlimited
Number of horses per athlete: **12 Horses max/rider (4 Max. Small/Medium/Big)** as follows:

Small Class (1.10-1.20-1.25m): 3 per rider
Medium Class A (1.30-1.35m): 2 per rider
Big Class A (1.40-1.45-1.50m): 2 per rider (Only 1 in the LR)

Classes with heights max.1.30m are open for children 12-13 years old with the express permission of their NF (Art. 255 JRs).

Classes with heights max.1.40m are open for children 14-15 years old with the express permission of their NF (Art. 255 JRs).

Athletes are invited by the Organiser through their National Federation.

One (1) groom per athlete.

- **Each horse can jump one class per day, but max. 3 classes per week.**
- **Athletes can compete with a total of 12 horses in the CSI2/3* and 9 horses in the CSIYH* (3 per age).**

All riders should get in contact with the show office before the date of the definite entries. The OC reserve the right to give preference to the entries of riders who contacted the show office in time.

The number of stables is binding with the deposit payment.
A prepayment of 100€/horse/week must be done to the following account:
Please specify the name of the riders (especially for payment done by companies, sponsors...)

Holder: CIRCUITO HÍPICO DEL SOL, S.L.
Bank : UNICAJA BANK
IBAN : ES27 2103 4020 0100 3000 7954
SWIFT N° : UCJAES2MXXX
Bank address: Avenida de Andalucía, N° 17
11150 Vejer de la Frontera
Cádiz – Spain

The deposit is not refundable for cancellation after 01.09.2021. All no show or late withdrawals for any reason will be directly and automatically invoiced to the rider and his/her NF. The OC will charge the 100% of the price of the entry fee per horse. The fee is payable even if the horse is subsequently withdrawn after the date of substitutions.

The OC reserve the right to give preference to the entries of riders who register for the whole tour.

VII. ENTRIES

IMPORTANT

- Entries must be made by NFs through the FEI Entry System for all categories of this Event (<https://invitation.fei.org/login>);
- Additional documentation can be found at: <https://inside.fei.org/fei/your-role/it-services/fei-entry-system/fei-entry-system-jumping>;
- All Athletes and Horses participating in any International Competition must be registered with the FEI;
- Athletes and/or Horses present at the Event without having been entered through the FEI's Online Entry System will be automatically disqualified unless compelling circumstances warrant otherwise.

1. ENTRY DATES AND ENTRY FEES

Entries have to be in accordance with Art.251 of the FEI Jumping Rules, 26th edition, updates effective 1 January 2021

Deadlines for Entries:

Definite Entries:

1st week: 23/09/2021

2nd week: 30/09/2021

Last date for substitutions:

One day before of the vet check

1st week: 12/10/2021

2nd week: 19/10/2021

Entry fee per horse (per category):

VAT excluded

Stabling included

CSI3*: 450€/event

CSI2*: 400€/event

CSIYH*: 300€/event

Non-competing: 300€/event

VAT (in %) :

21%

Please refer to definition of Entry fees and Compulsory fees in the Glossary of the FEI Jumping Rules 26th edition, updates effective 1 January 2021, that is copied in Section XIV point 10.

Compulsory fees per horse:

- EADCMP Fee: Included in entry fee
Not included in entry fee
 - Lower Level Events (CIMS) CHF 18 per horse per event
 - Higher Level Events CHF 25 per horse per event

(For definition of CIMs see Appendix E of the FEI General Regulations, all other events not defined as CIMs)

- Fee for manure disposal (at OC discretion; maximum € 40 per horse per Event). 40€ Per horse
- Fee for health/customs-related documents for Horses, if applicable (only if requested) 35€ Per horse

All aforementioned amounts are including VAT

Total maximum fee per horse: 75€ + 18 CHF (Lower Events) or 25 CHF (Higher Events)

Compulsory fees per athlete:

- NF fee if applicable Per athlete
- NF medication control programme fee if applicable Per athlete
- Fee for lorry parking if applicable 80€/week Per lorry/caravan
- Fee for electric hook-up for lorry 90€/week since arrival Per lorry/caravan

All aforementioned amounts are including VAT

Total maximum fee per Athlete: Depending on the number of lorries.

2. OTHER FEES

All other fees must optional fees and be listed hereunder with the details of the amounts to be charged and approved by the FEI. Only fees approved by the FEI and listed in the approved Schedule can be charged by the OC. Please specify if price per bale or other quantity.

Hay: 10,12€/bale

Straw: 6,60€/bale (**1st bedding free**)

Shavings: 11.07€/bale National - ~~12.70€/bale Imported~~

Other (please specify):

- Tack room (permanent stables): 80€/week
Only limited number available in permanent stables

- Fee for parking Trailer, if requested 50 €/ week

- Fee for electric hook-up for Trailer, if requested 30 €/ week

- Large stable (only with certificate) 50 € per stable

- Unloading feed: 60.50€/pallet (max.242€)

THE OC WILL NOT ACCEPT THE DELIVERY OF HAY, SHAVINGS AND STRAW BY OTHERS SUPPLIERS ON THE SHOW GROUND! FOR ANY ILLEGAL DELIVERY WE WILL CHARGE THE ATHLETE 1.000€.

**Please note that all these prizes are subject to change.

All aforementioned amounts are including VAT

VAT number of the organiser: ESB41819673

The payments done by credit card American Express will have an additional surcharge of 3.00%.

All riders accounts must be closed before departure.

Payments must be done by credit card or bank transfer before leaving the facilities.

3. NO-SHOWS/LATE WITHDRAWALS

NB: In the case of withdrawals after the date of definite entries or no-shows the athlete or the respective NF will be held liable to reimburse the OC for the actual financial loss incurred by the OC (i.e. stabling and hotel expenses) as a result of the late withdrawal or no-show.

Amount charged: 300€ (VAT not included).

Space for organiser to provide further details if necessary

VIII. TIMETABLE

Competitions must not start before 08:00 and must not finish after 23:00, unless prior approval is granted by the FEI.

As per Jumping Rules Annex VI: combined competitions are not permitted.

The scheduling of competitions must take into account mandatory maintenance breaks as follows. In principle, there should be one maintenance break for every 40 starters; at a minimum, it is compulsory to include one maintenance break in competitions with 50-99 starters after half of the starters have competed. Competitions with 100 starters or more must have three maintenance breaks. The start list must indicate when the maintenance break will take place (e.g. after N° 25).

(to be provided per category/level if multiple events)

	Day	Date	Time
• Opening of stables	Tuesday (1 st week)	12/10/2021	12:00
	Tuesday (2 nd week)	19/10/2021	12:00
• Horse Inspection <i>All horses taking part at this Event must be present during the first horse inspection, unless unable to do so due to "force majeure"</i>	Wednesday (1 st Week)	13/10/2021	10:00
	Wednesday (2 nd Week)	20/10/2021	10:00
• Horse Re-Inspection	Thursday (1 st Week)	14/10/2021	08:30
	Thursday (2 nd Week)	21/10/2021	08:30
• Opening times of exercise areas	Daily		09:00-17:00

COMPETITION I: CSI2*/CSIYH*
1st Week: 14th – 17th October

No.	CLASSES	DATE		ART	Type	HEIGHT	PRIZE MONEY CSIYH*	PRIZE MONEY CSI2*
1	5 Y/O	Thursday	14/10/2021	238.1.1	FnoT	1,15	500,00 €	
2	6 Y/O	Thursday	14/10/2021	274.2.5	2Ph sp	1,25	700,00 €	
3	7 Y/O	Thursday	14/10/2021	274.2.5	2Ph sp	1,30	900,00 €	
4	1,30	Thursday	14/10/2021	274.2.5	2Ph sp	1,30		1.000,00 €
5	1,35	Thursday	14/10/2021	238.2.1	FT	1,35		2.000,00 €
6	1,40	Thursday	14/10/2021	238.2.1	FT	1,40		3.000,00 €
7	1,45	Thursday	14/10/2021	238.2.1	FT	1,45		4.000,00 €
8	5 Y/O	Friday	15/10/2021	274.2.5	2Ph sp	1,15-1,20	500,00 €	
9	7 Y/O	Friday	15/10/2021	238.2.1	FT	1,30-1,35	900,00 €	
10	1,10	Friday	15/10/2021	238.2.1	FT	1,10		400,00 €
11	1,20	Friday	15/10/2021	269	ACC	1,20		500,00 €
12	1,30	Friday	15/10/2021	238.2.1	FT	1,30		1.000,00 €
13	1,35	Friday	15/10/2021	274.2.5	2Ph sp	1,35		2.000,00 €
14	1,45	Friday	15/10/2021	238.2.1	FT	1,45		25.400,00 €
15	5 Y/O	Saturday	16/10/2021	274.2.5	2Ph sp	1,20	700,00 €	
16	6 Y/O	Saturday	16/10/2021	238.2.1	FT	1,25-1,30	700,00 €	
17	1,10	Saturday	16/10/2021	238.2.1	FT	1,10		400,00 €
18	1,20	Saturday	16/10/2021	238.2.1	FT	1,20		500,00 €
19	1,30	Saturday	16/10/2021	238.2.1	FT	1,30		1.000,00 €
20	1,35	Saturday	16/10/2021	274.2.5	2Ph sp	1,35		2.000,00 €
21	1,40	Saturday	16/10/2021	238.2.2	JO	1,40		4.000,00 €
22	6 Y/O	Sunday	17/10/2021	274.2.5	2Ph sp	1,30	900,00 €	
23	7 Y/O	Sunday	17/10/2021	238.2.1	FT	1,35	1.100,00 €	
24	1,10	Sunday	17/10/2021	238.2.1	FT	1,10		400,00 €
25	1,25	Sunday	17/10/2021	238.2.1	FT	1,25		600,00 €
26	1,40	Sunday	17/10/2021	238.2.1	FT	1,40		3.000,00 €
27	1,45	Sunday	17/10/2021	238.2.2	JO	1,45		25.400,00 €
							6.900,00 €	76.600,00 €

Total CSI2*: 76.600€

Total CSIYH*: 6.900€

Overall Prize Money: 83.500€

LR CLASSES					QUALIFICATION SYSTEM			
LR	Competition no	Date	Class/Heigh	Starters	Starters	Competition No.	Date	Class/Heigh
LR 1	14	Friday 15/10/2021	Big Class B (1.45m)	100	40	6	Thursday 14/10/2021	Big Class 1.40m
					*60	7	Thursday 14/10/2021	Big Class 1.45m
LR 2	27	Sunday 17/10/2021	Big Class GP (1.45m)	100	40	7	Thursday 14/10/2021	Big Class 1.45m
					**60	14	Friday 15/10/2021	Big Class 1.45m

COMPETITION II: CSI3* /CSIYH* 2nd Week: 21st – 24th October

No.	CLASSES	DATE		ART	Type	HEIGHT	PRIZE MONEY CSIYH*	PRIZE MONEY CSI3*
28	5 Y/O	Thursday	21/10/2021	238.1.1	FnoT	1,15	500,00 €	
29	6 Y/O	Thursday	21/10/2021	274.2.5	2Ph sp	1,25	700,00 €	
30	7 Y/O	Thursday	21/10/2021	274.2.5	2Ph sp	1,30	900,00 €	
31	1,30	Thursday	21/10/2021	274.2.5	2Ph sp	1,30		1.000,00 €
32	1,35	Thursday	21/10/2021	238.2.1	FT	1,35		2.000,00 €
33	1,40	Thursday	21/10/2021	238.2.1	FT	1,40		3.000,00 €
34	1,45	Saturday	23/10/2021	238.2.1	FT	1,45		25.400,00 €
93	1.45	Thursday	21/10/2021	238.2.1	FT	1.45		4.000,00 €
35	5 Y/O	Friday	22/10/2021	274.2.5	2Ph sp	1,15-1.20	500,00 €	
36	7 Y/O	Friday	22/10/2021	238.2.1	FT	1.30-1.35	900,00 €	
37	1,10	Friday	22/10/2021	238.2.1	FT	1,10		400,00 €
38	1,20	Friday	22/10/2021	269	ACC	1,20		500,00 €
39	1,30	Friday	22/10/2021	238.2.1	FT	1,30		1.000,00 €
40	1,40	Friday	22/10/2021	238.2.2	JO	1,40		3.000,00 €
41	1,45	Friday	22/10/2021	274.1.5.3	2Ph	1,45		25.400,00 €
42	5 Y/O	Saturday	23/10/2021	274.2.5	2Ph sp	1,20	700,00 €	
43	6 Y/O	Saturday	23/10/2021	238.2.1	FT	1,25-1.30	700,00 €	
44	1,10	Saturday	23/10/2021	238.2.1	FT	1,10		400,00 €
45	1,20	Saturday	23/10/2021	238.2.1	FT	1,20		500,00 €
46	1,30	Saturday	23/10/2021	238.2.1	FT	1,30		1.000,00 €
47	1,35	Saturday	23/10/2021	274.2.5	2Ph sp	1,35		2.000,00 €
48	1,40	Saturday	23/10/2021	238.2.1	FT	1,40		3.000,00 €
49	6 Y/O	Sunday	24/10/2021	274.2.5	2Ph sp	1,30	900,00 €	
50	7 Y/O	Sunday	24/10/2021	238.2.1	FT	1,35	1.100,00 €	
51	1,10	Sunday	24/10/2021	238.2.1	FT	1,10		400,00 €
52	1,25	Sunday	24/10/2021	238.2.1	FT	1,25		500,00 €
53	1,35	Sunday	24/10/2021	274.2.5	2Ph sp	1,35		2.000,00 €
54	1,40	Sunday	24/10/2021	238.2.1	FT	1,40		3.000,00 €
55	1,50	Sunday	24/10/2021	238.2.2	JO	1,50		51.200,00 €
							6.900,00 €	129.700,00 €

FEI APPROVED SCHEDULE
Vejer de la Frontera (ESP) 14-17 / 21-24 October 2021



Total CSI3*: 129.700€
Total CSIYH*: 6.900€
Overall Prize Money: 136.600€

LR CLASSES					QUALIFICATION SYSTEM			
LR	Competition no	Date	Class/Heigh	Starters	Starters	Competition No.	Date	Class/Heigh
LR 3	34	Saturday 23/10/2021	Big Class (1.45m)	100	30	40	Friday 22/10/2021	Big Class 1.40m
					***70	41	Friday 22/10/2021	Big Class 1.45m
LR 4	41	Friday 22/10/2021	Big Class (1.45m)	100	40	33	Thursday 21/10/2021	Big Class 1.40m
					*60	93	Thursday 21/10/2021	Big Class 1.45m
LR 5	55	Sunday 24/10/2021	Big Class GP (1.50m)	60	30	41	Friday 22/10/2021	Big Class 1.45m
					**30	34	Saturday 23/10/2021	Big Class 1.45m

IX. COMPETITION DETAIL

**COMPETITION I: CSI2*/CSIYH*
1st Week: 14th – 17th October**

The timetable will be announced the day before each competition.

FIRST DAY: THURSDAY

DATE (dd/mm/yy): 14/10/2021

COMPETITION No: 1

Type of Competition: Table A not against the clock

Acc. to Article: 238.1.1

Competition description: **CSIYH* FIVE YEAR OLD HORSES**

Jump-off (if any)	None	
Speed/Fixed time	350m/min	
Height of obstacles:	1.15m	
Number of horses per athlete	3	
Number of Starters:	100* (if more than 100 take part then please refer to	
Section XIV point 9)		
Total prize money:	500€	
Chart to be used:	1 (25% to winner)	<input checked="" type="checkbox"/>
	2 (33% to winner)	<input type="checkbox"/>

Please specify prize money amount for each athlete placed 13th and beyond: 5€

* * * * *

COMPETITION No: 2

Type of Competition: 2 Phases Special

Acc. to Article: 274.2.5

Competition description: **CSIYH* SIX YEAR OLD HORSES**

Jump-off (if any)	None	
Speed/Fixed time	350m/min	
Height of obstacles:	1.25m	
Number of horses per athlete	3	
Number of Starters:	100* (if more than 100 take part then please refer to	
Section XIV point 9)		
Total prize money:	700€	
Chart to be used:	1 (25% to winner)	<input checked="" type="checkbox"/>
	2 (33% to winner)	<input type="checkbox"/>

Please specify prize money amount for each athlete placed 13th and beyond: 7€

* * * * *

COMPETITION No: 3

Type of Competition: 2 Phases Special

Acc. to Article: 274.2.5

Competition description: **CSIYH* SEVEN YEAR OLD HORSES**

Jump-off (if any)	None
Speed/Fixed time	350m/min
Height of obstacles:	1.30m
Number of horses per athlete	3

FEI APPROVED SCHEDULE
Vejer de la Frontera (ESP) 14-17 / 21-24 October 2021

Number of Starters: 100* (if more than 100 take part then please refer to
Section XIV point 9)
Total prize money: 900€
Chart to be used: 1 (25% to winner)
2 (33% to winner)
Please specify prize money amount for each athlete placed 13th and beyond: 9€

* * * * *

COMPETITION No: 4

Type of Competition: 2 Phases Special
Acc. to Article: 274.2.5
Competition description: **CSI2* MEDIUM CLASS 1.30M**

Jump-off (if any) None
Speed/Fixed time 350m/min
Height of obstacles: 1.30 m
Number of horses per athlete 2
Number of Starters: 100* (if more than 100 take part then please refer to
Section XIV point 9)
Total prize money: 1.000€
Chart to be used: 1 (25% to winner)
2 (33% to winner)
Please specify prize money amount for each athlete placed 13th and beyond: 10€

* * * * *

COMPETITION No: 5

Type of Competition: Table A against the clock
Acc. to Article: 238.2.1
Competition description: **CSI2* MEDIUM CLASS 1.35M**

Jump-off (if any) None
Speed/Fixed time 350m/min
Height of obstacles: 1.35 m
Number of horses per athlete 2
Number of Starters: 100* (if more than 100 take part then please refer to
Section XIV point 9)
Total prize money: 2.000€
Chart to be used: 1 (25% to winner)
2 (33% to winner)
Please specify prize money amount for each athlete placed 13th and beyond: 15€

* * * * *

COMPETITION No: 6 (QUALIFIER FOR CLASS 14)

Type of Competition: Table A against the clock
Acc. to Article: 238.2.1
Competition description: **CSI2* BIG CLASS 1.40M**

The best 40 riders will qualify for the Big Class 1.45M Class 14 (LR 1 - Friday)

Jump-off (if any) None
Speed/Fixed time 375m/min
Height of obstacles: 1.40m
Number of horses per athlete 2

FEI APPROVED SCHEDULE
Vejer de la Frontera (ESP) 14-17 / 21-24 October 2021

Number of Starters: 100* (if more than 100 take part then please refer to
Section XIV point 9)
Total prize money: 3.000€
Chart to be used: 1 (25% to winner)
2 (33% to winner)
Please specify prize money amount for each athlete placed 13th and beyond: 20€

* * * * *

COMPETITION No: 7 (QUALIFIER FOR CLASS 14 & 27)

Type of Competition: Table A against the clock
Acc. to Article: 238.2.1
Competition description: **CSI2* BIG CLASS 1.45M**

- **The best placed riders not already qualified from competition 6, to reach the total of 100 starters qualify for the Big Class 1.45M Class 14 (LR 1 – Friday).**
- **The best 40 riders will qualify for the Big Class GP 1.45M Class 27 (LR 2 - Sunday).**

Jump-off (if any) None
Speed/Fixed time 375m/min
Height of obstacles: 1.45m
Number of horses per athlete 2
Number of Starters: 100* (if more than 100 take part then please refer to
Section XIV point 9)
Total prize money: 4.000€
Chart to be used: 1 (25% to winner)
2 (33% to winner)
Please specify prize money amount for each athlete placed 13th and beyond: 30€

* * * * *

SECOND DAY: FRIDAY **DATE (dd/mm/yy): 15/10/2021**

COMPETITION No: 8

Type of Competition: 2 Phases Special
Acc. to Article: 274.2.5
Competition description: **CSIYH* FIVE YEAR OLD HORSES**

Jump-off (if any) None
Speed/Fixed time 350m/min
Height of obstacles: 1.15-1.20m
Number of horses per athlete 3
Number of Starters: 100* (if more than 100 take part then please refer to
Section XIV point 9)
Total prize money: 500€
Chart to be used: 1 (25% to winner)
2 (33% to winner)
Please specify prize money amount for each athlete placed 13th and beyond: 5€

* * * * *

COMPETITION No: 9

Type of Competition: Table A against the clock
Acc. to Article: 238.2.1
Competition description: **CSIYH* SEVEN YEAR OLD HORSES**

Jump-off (if any) None
Speed/Fixed time 350m/min
Height of obstacles: 1.30-1.35m
Number of horses per athlete 3
Number of Starters: 100* (if more than 100 take part then please refer to
Section XIV point 9)
Total prize money: 900€
Chart to be used: 1 (25% to winner)
2 (33% to winner)
Please specify prize money amount for each athlete placed 13th and beyond: 9€

* * * * *

COMPETITION No: 10

Type of Competition: Table A against the clock
Acc. to Article: 238.2.1
Competition description: **CSI2* SMALL CLASS 1.10M**

Jump-off (if any) None
Speed/Fixed time 350m/min
Height of obstacles: 1.10m
Number of horses per athlete 3
Number of Starters: 100* (if more than 100 take part then please refer to
Section XIV point 9)
Total prize money: 400€
Chart to be used: 1 (25% to winner)
2 (33% to winner)
Please specify prize money amount for each athlete placed 13th and beyond: 4€

* * * * *

COMPETITION No: 11

Type of Competition: Accumulator
Acc. to Article: 269.1,2,3,5
Competition description: **CSI2* SMALL CLASS 1.20M**

Jump-off (if any) None
Speed/Fixed time 350m/min
Height of obstacles: 1.20m
Number of horses per athlete 3
Number of Starters: 100* (if more than 100 take part then please refer to
Section XIV point 9)
Total prize money: 500€
Chart to be used: 1 (25% to winner)
2 (33% to winner)
Please specify prize money amount for each athlete placed 13th and beyond: 5€

* * * * *

COMPETITION No: 12

Type of Competition: Table A against the clock
Acc. to Article: 238.2.1
Competition description: **CSI2* MEDIUM CLASS 1.30M**

Jump-off (if any) None
Speed/Fixed time 350m/min

Height of obstacles: 1.30m
 Number of horses per athlete 2
 Number of Starters: 100* (if more than 100 take part then please refer to Section XIV point 9)
 Total prize money: 1.000€
 Chart to be used: 1 (25% to winner)
 2 (33% to winner)
 Please specify prize money amount for each athlete placed 13th and beyond: 10€

* * * * *

COMPETITION No: 13

Type of Competition: 2 Phases Special
 Acc. to Article: 274.2.5
 Competition description: **CSI2* MEDIUM CLASS 1.35M**

Jump-off (if any) None
 Speed/Fixed time 350m/min
 Height of obstacles: 1.35m
 Number of horses per athlete 2
 Number of Starters: 100* (if more than 100 take part then please refer to Section XIV point 9)
 Total prize money: 2.000€
 Chart to be used: 1 (25% to winner)
 2 (33% to winner)
 Please specify prize money amount for each athlete placed 13th and beyond: 15€

* * * * *

COMPETITION No: 14 (QUALIFIER FOR THE GP CLASS 27)

Type of Competition: Table A against the clock
 Acc. to Article: 238.2.1
 Competition description: **CSI2* BIG CLASS 1.45M**

This class counts for the Longines Ranking Group D (LR 1)

- **Open to the best 40 placed riders of class 6 Big Class 1.40m (Thursday) and the best placed riders of class 7 Big Class 1.45m (Thursday) until the number of 100 starters is reached.**
- **The best placed riders not already qualified from competition 7, to reach the total of 100 starters (including automatically prequalified riders) qualify for the Big Class GP 1.45M Class 27 (LR 2 – Sunday).**

If a qualified rider does not start or is already qualified, he will be replaced by the next rider up until 4 hours prior to the competition.

Should the overall number of riders be equal to/less than 100 no qualification system will be applied. If there are still places available, each Athlete may ride two Horses.

Jump-off (if any) None
 Speed/Fixed time 375m/min
 Height of obstacles: 1.45m
 Number of horses per athlete 1
 Number of Starters: 100
 Total prize money: 25.400€
 Chart to be used: 1 (25% to winner)

2 (33% to winner)

Please specify prize money amount for each athlete placed 13th and beyond: 100€

* * * * *

THIRD DAY: SATURDAY

DATE (dd/mm/yy): 16/10/2021

COMPETITION No: 15

Type of Competition: 2 Phases Special

Acc. to Article: 274.2.5

Competition description: **CSIYH* FIVE YEAR OLD HORSES**

Jump-off (if any) None
Speed/Fixed time 350m/min
Height of obstacles: 1.20m
Number of horses per athlete 3
Number of Starters: 100* (if more than 100 take part then please refer to
Section XIV point 9)
Total prize money: 700€
Chart to be used: 1 (25% to winner)
2 (33% to winner)

Please specify prize money amount for each athlete placed 13th and beyond: 7€

* * * * *

COMPETITION No: 16

Type of Competition: Table A against the clock

Acc. to Article: 238.2.1

Competition description: **CSIYH* SIX YEAR OLD HORSES**

Jump-off (if any) None
Speed/Fixed time 350m/min
Height of obstacles: 1.25-1.30m
Number of horses per athlete 3
Number of Starters: 100* (if more than 100 take part then please refer to
Section XIV point 9)
Total prize money: 700€
Chart to be used: 1 (25% to winner)
2 (33% to winner)

Please specify prize money amount for each athlete placed 13th and beyond: 7€

* * * * *

COMPETITION No: 17

Type of Competition: Table A against the clock

Acc. to Article: 238.2.1

Competition description: **CSI2* SMALL CLASS 1.10M**

Jump-off (if any) None
Speed/Fixed time 350m/min
Height of obstacles: 1.10m
Number of horses per athlete 3
Number of Starters: 100* (if more than 100 take part then please refer to
Section XIV point 9)
Total prize money: 400€

FEI APPROVED SCHEDULE
Vejer de la Frontera (ESP) 14-17 / 21-24 October 2021

Chart to be used: 1 (25% to winner)
2 (33% to winner)

Please specify prize money amount for each athlete placed 13th and beyond: 4€

* * * * *

COMPETITION No: 18

Type of Competition: Table A against the clock

Acc. to Article: 238.2.1

Competition description: **CSI2* SMALL CLASS 1.20M**

Jump-off (if any) None
Speed/Fixed time 350m/min
Height of obstacles: 1.20m
Number of horses per athlete 3
Number of Starters: 100* (if more than 100 take part then please refer to
Section XIV point 9)
Total prize money: 500€
Chart to be used: 1 (25% to winner)
2 (33% to winner)

Please specify prize money amount for each athlete placed 13th and beyond: 5€

* * * * *

COMPETITION No: 19

Type of Competition: Table A against the clock

Acc. to Article: 238.2.1

Competition description: **CSI2* MEDIUM CLASS 1.30M**

Jump-off (if any) None
Speed/Fixed time 350m/min
Height of obstacles: 1.30m
Number of horses per athlete 2
Number of Starters: 100* (if more than 100 take part then please refer to
Section XIV point 9)
Total prize money: 1.000€
Chart to be used: 1 (25% to winner)
2 (33% to winner)

Please specify prize money amount for each athlete placed 13th and beyond: 10€

* * * * *

COMPETITION No: 20

Type of Competition: 2 Phases Special

Acc. to Article: 274.2.5

Competition description: **CSI2* MEDIUM CLASS 1.35M**

Jump-off (if any) None
Speed/Fixed time 350m/min
Height of obstacles: 1.35m
Number of horses per athlete 2
Number of Starters: 100* (if more than 100 take part then please refer to
Section XIV point 9)
Total prize money: 2.000€
Chart to be used: 1 (25% to winner)
2 (33% to winner)

Please specify prize money amount for each athlete placed 13th and beyond: 15€

* * * * *

COMPETITION No: 21

Type of Competition: Table A against the clock with Jump Off

Acc. to Article: 238.2.2

Competition description: **CSI2* MEDIUM CLASS 1.40M**

Jump-off (if any) One
Speed/Fixed time 375m/min
Height of obstacles: 1.40m
Number of horses per athlete 2
Number of Starters: 100* (if more than 100 take part then please refer to
Section XIV point 9)
Total prize money: 4.000€
Chart to be used: 1 (25% to winner)
2 (33% to winner)

Please specify prize money amount for each athlete placed 13th and beyond: 30€

* * * * *

FOURTH DAY: SUNDAY

DATE (dd/mm/yy): 17/10/2021

COMPETITION No: 22

Type of Competition: 2 Phases Special

Acc. to Article: 274.2.5

Competition description: **CSIYH* SIX YEAR OLD HORSES**

Jump-off (if any) None
Speed/Fixed time 350m/min
Height of obstacles: 1.30m
Number of horses per athlete 3
Number of Starters: 100* (if more than 100 take part then please refer to
Section XIV point 9)
Total prize money: 900€
Chart to be used: 1 (25% to winner)
2 (33% to winner)

Please specify prize money amount for each athlete placed 13th and beyond: 9€

* * * * *

COMPETITION No: 23

Type of Competition: Table A against the clock

Acc. to Article: 238.2.1

Competition description: **CSIYH* SEVEN YEAR OLD HORSES**

Jump-off (if any) None
Speed/Fixed time 350m/min
Height of obstacles: 1.35m
Number of horses per athlete 3
Number of Starters: 100* (if more than 100 take part then please refer to
Section XIV point 9)
Total prize money: 1.100€
Chart to be used: 1 (25% to winner)
2 (33% to winner)

Please specify prize money amount for each athlete placed 13th and beyond: 11€

* * * * *

COMPETITION No: 24

Type of Competition: Table A against the clock
Acc. to Article: 238.2.1
Competition description: **CSI2* SMALL CLASS 1.10M**

Jump-off (if any) None
Speed/Fixed time 350m/min
Height of obstacles: 1.10m
Number of horses per athlete 3
Number of Starters: 100* (if more than 100 take part then please refer to
Section XIV point 9)
Total prize money: 400€
Chart to be used: 1 (25% to winner)
2 (33% to winner)

Please specify prize money amount for each athlete placed 13th and beyond: 4€

* * * * *

COMPETITION No: 25

Type of Competition: Table A against the clock
Acc. to Article: 238.2.1
Competition description: **CSI2* SMALL CLASS 1.25M**

Jump-off (if any) None
Speed/Fixed time 350m/min
Height of obstacles: 1.25m
Number of horses per athlete 3
Number of Starters: 100* (if more than 100 take part then please refer to
Section XIV point 9)
Total prize money: 600€
Chart to be used: 1 (25% to winner)
2 (33% to winner)

Please specify prize money amount for each athlete placed 13th and beyond: 6€

* * * * *

COMPETITION No: 26

Type of Competition: Table A against the clock
Acc. to Article: 238.2.1
Competition description: **CSI2* BIG CLASS 1.40M**

Jump-off (if any) None
Speed/Fixed time 375m/min
Height of obstacles: 1.40m
Number of horses per athlete 2
Number of Starters: 100* (if more than 100 take part then please refer to
Section XIV point 9)
Total prize money: 3.000€
Chart to be used: 1 (25% to winner)
2 (33% to winner)

Please specify prize money amount for each athlete placed 13th and beyond: 20€

* * * * *

* * * * *

COMPETITION No: 27

Type of Competition: Table A against the clock with Jump Off

Acc. to Article: 238.2.2

Competition description: **CSI2* BIG CLASS GP**

This class counts for the Longines Ranking Group D (LR 2)

Open to the best 40 placed riders of class 7 Big Class 1.45m (Thursday) and the best placed riders of class 14 Big Class 1.45m (LR 1 - Friday) until the number of 100 starters is reached including prequalified riders.

The following Athletes (not Athlete/Horse combinations) are automatically qualified for the Grand Prix at CSI Events, if present:

- 4.2.1. The winner of that Event’s Grand Prix the previous year;
- 4.2.2. The current National Jumping Champion of the host country;
- 4.2.3. The individual Jumping medal winners of the last Olympic and Pan-American Games, the last World and Continental Championships and the winner of the last FEI World Cup™ Jumping Final.

All athletes qualified for the Grand Prix, including those automatically qualified must complete, with their Grand Prix horse, the initial round of at least one FEI competition among those listed in JRs Art. 261.4.4 prior to the Grand Prix.

If a qualified rider does not start or is already qualified, he will be replaced by the next rider up until 4 hours prior to the competition.

Art. 254.6. If there are 50 starters or less, each Athlete may ride two Horses.

Jump-off (if any)	One
Speed/Fixed time	375m/min
Height of obstacles:	1.45m
Number of horses per athlete	1
Number of Starters:	100
Total prize money:	25.400€
Chart to be used:	1 (25% to winner) <input checked="" type="checkbox"/> x
	2 (33% to winner) <input type="checkbox"/>

Please specify prize money amount for each athlete placed 13th and beyond: 100€

* * * * *

COMPETITION II: CSI3*/CSIYH*
2nd Week: 21st – 24th October

The timetable will be announced the day before each competition.

FIRST DAY: THURSDAY **DATE (dd/mm/yy): 21/10/2021**

COMPETITION No: 28

Type of Competition: Table A not against the clock

Acc. to Article: 238.1.1

Competition description: **CSIYH* FIVE YEAR OLD HORSES**

Jump-off (if any)	None
Speed/Fixed time	350m/min
Height of obstacles:	1.15m
Number of horses per athlete	3
Number of Starters:	100* (if more than 100 take part then please refer to
Section XIV point 9)	
Total prize money:	500€
Chart to be used:	1 (25% to winner) <input checked="" type="checkbox"/>
	2 (33% to winner) <input type="checkbox"/>

Please specify prize money amount for each athlete placed 13th and beyond: 5€

* * * * *

COMPETITION No: 29

Type of Competition: 2 Phases Special

Acc. to Article: 274.2.5

Competition description: **CSIYH* SIX YEAR OLD HORSES**

Jump-off (if any)	None
Speed/Fixed time	350m/min
Height of obstacles:	1.25m
Number of horses per athlete	3
Number of Starters:	100* (if more than 100 take part then please refer to
Section XIV point 9)	
Total prize money:	700€
Chart to be used:	1 (25% to winner) <input checked="" type="checkbox"/>
	2 (33% to winner) <input type="checkbox"/>

Please specify prize money amount for each athlete placed 13th and beyond: 7€

* * * * *

COMPETITION No: 30

Type of Competition: 2 Phases Special

Acc. to Article: 274.2.5

Competition description: **CSIYH* SEVEN YEAR OLD HORSES**

Jump-off (if any)	None
Speed/Fixed time	350m/min
Height of obstacles:	1.30m
Number of horses per athlete	3
Number of Starters:	100* (if more than 100 take part then please refer to
Section XIV point 9)	
Total prize money:	900€

FEI APPROVED SCHEDULE
Vejer de la Frontera (ESP) 14-17 / 21-24 October 2021

Chart to be used: 1 (25% to winner)
2 (33% to winner)

Please specify prize money amount for each athlete placed 13th and beyond: 9€

* * * * *

COMPETITION No: 31

Type of Competition: 2 Phases Special

Acc. to Article: 274.2.5

Competition description: **CSI3* MEDIUM CLASS 1.30M**

Jump-off (if any) None
Speed/Fixed time 350m/min
Height of obstacles: 1.30 m
Number of horses per athlete 2
Number of Starters: 100* (if more than 100 take part then please refer to Section XIV point 9)
Total prize money: 1.000€
Chart to be used: 1 (25% to winner)
2 (33% to winner)

Please specify prize money amount for each athlete placed 13th and beyond: 10€

* * * * *

COMPETITION No: 32

Type of Competition: Table A against the clock

Acc. to Article: 238.2.1

Competition description: **CSI3* MEDIUM CLASS 1.35M**

Jump-off (if any) None
Speed/Fixed time 350m/min
Height of obstacles: 1.35 m
Number of horses per athlete 2
Number of Starters: 100* (if more than 100 take part then please refer to Section XIV point 9)
Total prize money: 2.000€
Chart to be used: 1 (25% to winner)
2 (33% to winner)

Please specify prize money amount for each athlete placed 13th and beyond: 15€

* * * * *

COMPETITION No: 33 (QUALIFIER FOR CLASS 41)

Type of Competition: Table A against the clock

Acc. to Article: 238.2.1

Competition description: **CSI3* BIG CLASS 1.40M**

The best 40 riders will qualify for the Big Class 1.45M Class 41 (LR 4 - Friday)

Jump-off (if any) None
Speed/Fixed time 375m/min
Height of obstacles: 1.40m
Number of horses per athlete 2
Number of Starters: 100* (if more than 100 take part then please refer to Section XIV point 9)
Total prize money: 3.000€

FEI APPROVED SCHEDULE
Vejer de la Frontera (ESP) 14-17 / 21-24 October 2021

Chart to be used: 1 (25% to winner)
2 (33% to winner)
Please specify prize money amount for each athlete placed 13th and beyond: 20€

* * * * *

COMPETITION No: 93 (QUALIFIER FOR CLASS 41)

Type of Competition: Table A against the clock
Acc. to Article: 238.2.1
Competition description: **CSI3* BIG CLASS 1.45M**

- **The best placed riders not already qualified from competition 33, to reach the total of 100 starters qualify for the Big Class 1.45M Class 41 (LR 4 – Friday).**

Jump-off (if any) None
Speed/Fixed time 375m/min
Height of obstacles: 1.45m
Number of horses per athlete 2
Number of Starters: 100* (if more than 100 take part then please refer to Section XIV point 9)
Total prize money: 4.000€
Chart to be used: 1 (25% to winner)
2 (33% to winner)
Please specify prize money amount for each athlete placed 13th and beyond: 30€

* * * * *

SECOND DAY: FRIDAY **DATE (dd/mm/yy): 22/10/2021**

COMPETITION No: 35

Type of Competition: 2 Phases Special
Acc. to Article: 274.2.5
Competition description: **CSIYH* FIVE YEAR OLD HORSES**

Jump-off (if any) None
Speed/Fixed time 350m/min
Height of obstacles: 1.15-1.20m
Number of horses per athlete 3
Number of Starters: 100* (if more than 100 take part then please refer to Section XIV point 9)
Total prize money: 500€
Chart to be used: 1 (25% to winner)
2 (33% to winner)
Please specify prize money amount for each athlete placed 13th and beyond: 5€

* * * * *

COMPETITION No: 36

Type of Competition: Table A against the clock
Acc. to Article: 238.2.1
Competition description: **CSIYH* SEVEN YEARS OLD HORSES**

Jump-off (if any) None
Speed/Fixed time 350m/min

Vejer de la Frontera (ESP) 14-17 / 21-24 October 2021

Height of obstacles: 1.30-1.35m
 Number of horses per athlete 3
 Number of Starters: 100* (if more than 100 take part then please refer to Section XIV point 9)
 Total prize money: 900€
 Chart to be used: 1 (25% to winner)
 2 (33% to winner)
 Please specify prize money amount for each athlete placed 13th and beyond: 9€

* * * * *

COMPETITION No: 37

Type of Competition: Table A against the clock
 Acc. to Article: 238.2.1
 Competition description: **CSI3* SMALL CLASS 1.10M**

Jump-off (if any) None
 Speed/Fixed time 350m/min
 Height of obstacles: 1.10m
 Number of horses per athlete 3
 Number of Starters: 100* (if more than 100 take part then please refer to Section XIV point 9)
 Total prize money: 400€
 Chart to be used: 1 (25% to winner)
 2 (33% to winner)
 Please specify prize money amount for each athlete placed 13th and beyond: 4€

* * * * *

COMPETITION No: 38

Type of Competition: Accumulator
 Acc. to Article: 269.1,2,3,5
 Competition description: **CSI3* SMALL CLASS 1.20M**

Jump-off (if any) None
 Speed/Fixed time 350m/min
 Height of obstacles: 1.20m
 Number of horses per athlete 3
 Number of Starters: 100* (if more than 100 take part then please refer to Section XIV point 9)
 Total prize money: 500€
 Chart to be used: 1 (25% to winner)
 2 (33% to winner)
 Please specify prize money amount for each athlete placed 13th and beyond: 5€

* * * * *

COMPETITION No: 39

Type of Competition: Table A against the clock
 Acc. to Article: 238.2.1
 Competition description: **CSI3* MEDIUM CLASS 1.30M**

Jump-off (if any) None
 Speed/Fixed time 350m/min
 Height of obstacles: 1.30m
 Number of horses per athlete 2
 Number of Starters: 100* (if more than 100 take part then please refer to Section XIV point 9)

Section XIV point 9)

Total prize money: 1.000€
Chart to be used: 1 (25% to winner)
2 (33% to winner)

Please specify prize money amount for each athlete placed 13th and beyond: 10€

* * * * *

COMPETITION No: 40 (QUALIFIER FOR CLASS 34)

Type of Competition: Table A against the clock with Jump Off

Acc. to Article: 238.2.2

Competition description: **CSI3* MEDIUM CLASS 1.40M**

The best 30 riders will qualify for the Big Class 1.45M Class 34 (LR 3 -Saturday)

Jump-off (if any) One
Speed/Fixed time 375m/min
Height of obstacles: 1.40m
Number of horses per athlete 2
Number of Starters: 100* (if more than 100 take part then please refer to
Section XIV point 9)
Total prize money: 3.000€
Chart to be used: 1 (25% to winner)
2 (33% to winner)

Please specify prize money amount for each athlete placed 13th and beyond: 20€

* * * * *

COMPETITION No: 41 (QUALIFIER FOR CLASS 34 & THE GP CLASS 55)

Type of Competition: 2 Phases

Acc. to Article: 274.1.5.3

Competition description: **CSI3* BIG CLASS 1.45M**

This class counts for the Longines Ranking Group D (LR 4)

- **Open to the best 40 placed riders of class 33 Big Class 1.40m (Thursday) and the best placed riders of class 93 Big Class 1.45m (Thursday) until the number of 100 starters is reached.**
- **The best placed riders not already qualified from competition 40, to reach the total of 100 starters qualify for the Big Class 1.45M Class 34 (LR 3 – Saturday).**
- **The best 30 placed riders qualify for the Big Class 1.45M Class 55 (LR 5 – Sunday).**

If a qualified rider does not start or is already qualified, he will be replaced by the next rider up until 4 hours prior to the competition.

Should the overall number of riders be equal to/less than 100 no qualification system will be applied. If there are still places available, each Athlete may ride two Horses.

Jump-off (if any) None
Speed/Fixed time 375m/min
Height of obstacles: 1.45m
Number of horses per athlete 1
Number of Starters: 100
Total prize money: 25.400€
Chart to be used: 1 (25% to winner)

2 (33% to winner)

Please specify prize money amount for each athlete placed 13th and beyond: 100€

* * * * *

THIRD DAY: SATURDAY

DATE (dd/mm/yy): 23/10/2021

COMPETITION No: 42

Type of Competition: 2 Phases Special

Acc. to Article: 274.2.5

Competition description: **CSIYH* FIVE YEAR OLD HORSES**

Jump-off (if any) None
Speed/Fixed time 350m/min
Height of obstacles: 1.20m
Number of horses per athlete 3
Number of Starters: 100* (if more than 100 take part then please refer to
Section XIV point 9)
Total prize money: 700€
Chart to be used: 1 (25% to winner)
2 (33% to winner)

Please specify prize money amount for each athlete placed 13th and beyond: 7€

* * * * *

COMPETITION No: 43

Type of Competition: Table A against the clock

Acc. to Article: 238.2.1

Competition description: **CSIYH* SIX YEAR OLD HORSES**

Jump-off (if any) None
Speed/Fixed time 350m/min
Height of obstacles: 1.25-1.30m
Number of horses per athlete 3
Number of Starters: 100* (if more than 100 take part then please refer to
Section XIV point 9)
Total prize money: 700€
Chart to be used: 1 (25% to winner)
2 (33% to winner)

Please specify prize money amount for each athlete placed 13th and beyond: 7€

* * * * *

COMPETITION No: 44

Type of Competition: Table A against the clock

Acc. to Article: 238.2.1

Competition description: **CSI3* SMALL CLASS 1.10M**

Jump-off (if any) None
Speed/Fixed time 350m/min
Height of obstacles: 1.10m
Number of horses per athlete 3
Number of Starters: 100* (if more than 100 take part then please refer to
Section XIV point 9)

FEI APPROVED SCHEDULE
Vejer de la Frontera (ESP) 14-17 / 21-24 October 2021

Total prize money: 400€
Chart to be used: 1 (25% to winner)
2 (33% to winner)
Please specify prize money amount for each athlete placed 13th and beyond: 4€

* * * * *

COMPETITION No: 45

Type of Competition: Table A against the clock
Acc. to Article: 238.2.1
Competition description: **CSI3* SMALL CLASS 1.20M**

Jump-off (if any) None
Speed/Fixed time 350m/min
Height of obstacles: 1.20m
Number of horses per athlete 3
Number of Starters: 100* (if more than 100 take part then please refer to Section XIV point 9)
Total prize money: 500€
Chart to be used: 1 (25% to winner)
2 (33% to winner)
Please specify prize money amount for each athlete placed 13th and beyond: 5€

* * * * *

COMPETITION No: 46

Type of Competition: Table A against the clock
Acc. to Article: 238.2.1
Competition description: **CSI3* MEDIUM CLASS 1.30M**

Jump-off (if any) None
Speed/Fixed time 350m/min
Height of obstacles: 1.30m
Number of horses per athlete 2
Number of Starters: 100* (if more than 100 take part then please refer to Section XIV point 9)
Total prize money: 1.000€
Chart to be used: 1 (25% to winner)
2 (33% to winner)
Please specify prize money amount for each athlete placed 13th and beyond: 10€

* * * * *

COMPETITION No: 47

Type of Competition: 2 Phases Special
Acc. to Article: 274.2.5
Competition description: **CSI3* MEDIUM CLASS 1.35M**

Jump-off (if any) None
Speed/Fixed time 350m/min
Height of obstacles: 1.35m
Number of horses per athlete 2
Number of Starters: 100* (if more than 100 take part then please refer to Section XIV point 9)
Total prize money: 2.000€
Chart to be used: 1 (25% to winner)
2 (33% to winner)

FEI APPROVED SCHEDULE
Vejer de la Frontera (ESP) 14-17 / 21-24 October 2021

Please specify prize money amount for each athlete placed 13th and beyond: 15€

* * * * *

COMPETITION No: 48

Type of Competition: Table A against the clock
Acc. to Article: 238.2.1
Competition description: **CSI3* MEDIUM CLASS 1.40**

Jump-off (if any) None
Speed/Fixed time 375m/min
Height of obstacles: 1.40m
Number of horses per athlete 2
Number of Starters: 100* (if more than 100 take part then please refer to Section XIV point 9)
Total prize money: 3.000€
Chart to be used: 1 (25% to winner) x
2 (33% to winner)

Please specify prize money amount for each athlete placed 13th and beyond: 20€

* * * * *

COMPETITION No: 34 (QUALIFIER FOR CLASS 55)

Type of Competition: Table A against the clock
Acc. to Article: 238.2.1
Competition description: **CSI3* BIG CLASS 1.45M**

This class counts for the Longines Ranking Group D (LR 3)

- **Open to the best 30 placed riders of class 40 Big Class 1.40m (Friday) and the best placed riders of class 41 Big Class 1.45m (LR 4 - Friday) until the number of 100 starters is reached.**
- **The best placed riders not already qualified from competition 41, to reach the total of 60 starters (including automatically prequalified riders) qualify for the Big Class GP 1.45M Class 55 (LR 5 – Sunday).**

If a qualified rider does not start or is already qualified, he will be replaced by the next rider up until 4 hours prior to the competition.

Should the overall number of riders be equal to/less than 100 no qualification system will be applied. If there are still places available, each Athlete may ride two Horses.

Jump-off (if any) None
Speed/Fixed time 375m/min
Height of obstacles: 1.45m
Number of horses per athlete 1
Number of Starters: 100
Total prize money: 25.400€
Chart to be used: 1 (25% to winner) x
2 (33% to winner)

Please specify prize money amount for each athlete placed 13th and beyond: 100€

* * * * *

FOURTH DAY: SUNDAY

DATE (dd/mm/yy): 24/10/2021

COMPETITION No: 49

Type of Competition: 2 Phases Special

Acc. to Article: 274.2.5

Competition description: **CSIYH* SIX YEAR OLD HORSES**

Jump-off (if any) None
Speed/Fixed time 350m/min
Height of obstacles: 1.30m
Number of horses per athlete 3
Number of Starters: 100* (if more than 100 take part then please refer to Section XIV point 9)
Total prize money: 900€
Chart to be used: 1 (25% to winner)
2 (33% to winner)

Please specify prize money amount for each athlete placed 13th and beyond: 9€

* * * * *

COMPETITION No: 50

Type of Competition: Table A against the clock

Acc. to Article: 238.2.1

Competition description: **CSIYH* SEVEN YEAR OLD HORSES**

Jump-off (if any) None
Speed/Fixed time 350m/min
Height of obstacles: 1.35m
Number of horses per athlete 3
Number of Starters: 100* (if more than 100 take part then please refer to Section XIV point 9)
Total prize money: 1.100€
Chart to be used: 1 (25% to winner)
2 (33% to winner)

Please specify prize money amount for each athlete placed 13th and beyond: 11€

* * * * *

COMPETITION No: 51

Type of Competition: Table A against the clock

Acc. to Article: 238.2.1

Competition description: **CSI3* SMALL CLASS 1.10M**

Jump-off (if any) None
Speed/Fixed time 350m/min
Height of obstacles: 1.10m
Number of horses per athlete 3
Number of Starters: 100* (if more than 100 take part then please refer to Section XIV point 9)
Total prize money: 400€
Chart to be used: 1 (25% to winner)
2 (33% to winner)

Please specify prize money amount for each athlete placed 13th and beyond: 4€

* * * * *

COMPETITION No: 52

Type of Competition: Table A against the clock

Vejer de la Frontera (ESP) 14-17 / 21-24 October 2021

Acc. to Article: 238.2.1

Competition description: **CSI3* SMALL CLASS 1.25M**

Jump-off (if any)	None
Speed/Fixed time	350m/min
Height of obstacles:	1.25m
Number of horses per athlete	3
Number of Starters:	100* (if more than 100 take part then please refer to
Section XIV point 9)	
Total prize money:	500€
Chart to be used:	1 (25% to winner) <input checked="" type="checkbox"/>
	2 (33% to winner) <input type="checkbox"/>

Please specify prize money amount for each athlete placed 13th and beyond: 5€

* * * * *

COMPETITION No: 53

Type of Competition: 2 Phases Special

Acc. to Article: 274.2.5

Competition description: **CSI3* MEDIUM CLASS 1.35M**

Jump-off (if any)	None
Speed/Fixed time	350m/min
Height of obstacles:	1.35m
Number of horses per athlete	2
Number of Starters:	100* (if more than 100 take part then please refer to
Section XIV point 9)	
Total prize money:	2.000€
Chart to be used:	1 (25% to winner) <input checked="" type="checkbox"/>
	2 (33% to winner) <input type="checkbox"/>

Please specify prize money amount for each athlete placed 13th and beyond: 15€

* * * * *

COMPETITION No: 54

Type of Competition: Table A against the clock

Acc. to Article: 238.2.1

Competition description: **CSI3* BIG CLASS 1.40M**

Jump-off (if any)	None
Speed/Fixed time	375m/min
Height of obstacles:	1.40m
Number of horses per athlete	2
Number of Starters:	100* (if more than 100 take part then please refer to
Section XIV point 9)	
Total prize money:	3.000€
Chart to be used:	1 (25% to winner) <input checked="" type="checkbox"/>
	2 (33% to winner) <input type="checkbox"/>

Please specify prize money amount for each athlete placed 13th and beyond: 20€

* * * * *

COMPETITION No: 55

Type of Competition: Table A against the clock with Jump Off

Acc. to Article: 238.2.2 + JRs Annex VIII, Art. 3.11

Competition description: **CSI3* BIG CLASS GP**

**This class counts for the Longines Ranking Group C (LR 5)
Qualifier for CH-M-S 2022 (Certificates of Capability)**

Open to the best 30 placed riders of class 41 Big Class 1.45m (LR 3 -Friday) and the best placed riders of class 34 Big Class 1.45m (LR 4 - Saturday) until the number of 60 starters is reached including prequalified riders.

The following Athletes (not Athlete/Horse combinations) are automatically qualified for the Grand Prix at CSI Events, if present:

- 4.2.1. The winner of that Event's Grand Prix the previous year;
- 4.2.2. The current National Jumping Champion of the host country;
- 4.2.3. The individual Jumping medal winners of the last Olympic and Pan-American Games, the last World and Continental Championships and the winner of the last FEI World Cup™ Jumping Final.

All athletes qualified for the Grand Prix, including those automatically qualified must complete, with their Grand Prix horse, the initial round of at least one FEI competition among those listed in JRs Art. 261.4.4 prior to the Grand Prix.

If a qualified rider does not start or is already qualified, he will be replaced by the next rider up until 4 hours prior to the competition.

Art. 254.6. If there are 30 starters or less, each Athlete may ride two Horses.

Jump-off (if any)	One
Speed/Fixed time	375m/min
Height of obstacles:	1.50m (2 verticals of 1m60 compulsory)
Number of horses per athlete	1
Number of Starters:	60
Total prize money:	51.200€
Chart to be used:	1 (25% to winner) <input checked="" type="checkbox"/> x
	2 (33% to winner) <input type="checkbox"/>

Please specify prize money amount for each athlete placed 13th and beyond: 200€

Counting for CH-M-S 2022

*This competition will count as a competition where athletes and horses can achieve the Minimum Eligibility Requirements (MER) providing the course meets the following specifications: consist of at least 12 obstacles which may vary in height between 1.40m and 1.60m. The spread obstacles must have spreads of between 1.50m to 2.00m (2.20m for the triple bar). At least two vertical obstacles must be provided with a minimum height of 1.60m. In addition to these requirements the competition must comply with the following **mandatory requirements** to count for the CH-M-S 2022:*

- *The first obstacle may be a vertical minimum height 1m45 or an oxer minimum height 1m40 for the front pole and 1m45 for the back pole;*
- *One set of planks on flat cups;*
- *Triple bar minimum 1m80 spread and 1m50 height;*
- *One wall or gate;*
- *One narrow vertical or spread obstacle with frontal width between 2m50 to 3m00;*
- *Minimum one triple and one double combination (three doubles are not allowed);*
- *The triple combination must have at least one oxer minimum 1m50 height and 1m50 spread, and at least one one-stride distance either from A to B or from B to C;*
- *Approximately 50% of the efforts must be vertical obstacles and 50% must be spread obstacles (e.g. oxer, triple bar, Swedish oxer, narrow oxer etc.). Nevertheless, no more than 55% of the efforts may be vertical and no more than 60% of the efforts may be spread obstacles, including the water jump if there is one;*
- *Two verticals (other than the wall) must have a height of 1m60;*

- *At least two spread obstacles with minimum height of 1m50 and minimum spread of 1m60;*
- *Two liverpool obstacles, one vertical and one spread. If the course includes a water jump, a minimum of one liverpool will be allowed;*
- *Bend or straight line of up to six strides between two single obstacles;*
- *Depth of cups: minimum 50% of cups must have a depth of 18mm; depth of cups maximum 20mm if poles are 350-400cm long;*
- *Minimum length of course 400 meters with a minimum speed of 375m/min;*
- *The course will include minimum 12 and maximum 14 obstacles.*

The Foreign Judge is responsible for ensuring that the course is built to the required dimensions and must confirm to the FEI through the Foreign Judge Report whether or not the course requirements have been met and must upload/sent the course plan including all heights and dimensions following the Event.

* * * * *

X. FACILITIES OFFERED

1. ATHLETES

Accommodation

Hotel: Hipotels Gran Conil****

Address: C/Pleamar Nº 2 C.P.11140 Conil de la Frontera (Cádiz-Spain)

Telephone: +34 856 905 000 (Hotel) / +34 956 447 125 (Sunshine Tour)

GPS Coordinates: Lat 36.282842 Long -6.098732

At the expense of: The Organiser or Athletes

Accommodated (bed and breakfast) from _____ to _____

Meals

At the expense of: The Organiser or Athletes

Meals provided from _____ to _____ .

Requests for accomodation: sunshinetour@sunshinetour.net

2. GROOMS

Accommodation.

Requests for accommodation must be sent with entries.

At the expense of: The Organiser or Athletes

Accommodated (bed and breakfast) from _____ to _____

Meals.

At the expense of: The Organiser or Athletes

Meals provided from _____ to _____ .

Space for organiser to include details if necessary

NB: If applicable, Organiser must provide proper sanitary conditions. The showering facilities should be sufficient for both male and female grooms with hot and cold water. Shower facilities as well as restrooms should at all times be in a state of cleanliness.

XI. LOGISTICAL/ADMINISTRATIVE/TECHNICAL INFORMATION

1. DRAW

List of Draws, time, date and location: Draw will be made by computer at the Show Office the day before each class.

2. COMPETITION ARENA(S)

Dimensions: Arena 3: 150mx80m
Type of Footing: Grass

3. PRACTICE ARENA(S)

Dimensions: Arena 6: 80mx85m
Type of Footing: Sand

Riders must have the possibility to exercise their horses in an exercise area under a Steward's supervision at least 30 minutes per day outside of the competition warm-up period. Details of opening times of exercise areas must be included in the timetable.

4. STABLES

Size of boxes 3 m x 3 m (minimum 3m x 3m+20% 3m x 4m)

5. SAFETY CUPS

Name of Manufacturer: BECK & HEUN GMBH Steinstrasse 4 D-35794 Mengerkirchen

6. TIMING DEVICE

Name of Manufacturer: ALGE
Model: TDC 8001
FEI Report number: 22020007A

7. SCORING/TIMING PROVIDER

Will you use a FEI Certified Service Provider to manage the scoring and timing at your Event?

(The list of certified Service Providers is available here: <https://inside.fei.org/fei/your-role/it-services/it-providers/list>)

No

Name of the company: Theodor Adrian Tita - Professional Time Keeping

Contact person at Event

Name: Adrian Tita
FEI ID number: 10135703
Contact email: theodor_tita@hotmail.com

The FEI may require to be provided with real time results data feed of your Events according to FEI requirements; in this case you and your provider will be informed accordingly.

8. OTHER TECHNOLOGY/SERVICE PROVIDER(S)

Will you use other technology/service provider(s) at your event?

No

9. PRIZE GIVING CEREMONY

The owner of the winning horse/pony must be invited to the prize giving ceremony for the Grand Prix, if present at the event.

The number of athletes required to present themselves for the prize-giving ceremony of each competition is 5.

All Prize Giving Ceremonies must strictly follow the [Covid-19 guidelines for Prize giving protocols and media activities.](#)

10. ADVERTISING ON ATHLETES AND HORSES

At CSI events, and all competitions except for the Nations Cup, athletes are authorised to carry the logo of their personal sponsor in accordance with the articles 256.3 and 257.3 of the FEI Jumping Rules.

The Chief Steward will check that the advertising on athletes and horses complies with these Articles.

11. TICKETING

Are you selling tickets for spectators to attend your event: Yes No

Name of your ticketing provider:

Web address to buy ticket:

12. BETTING

Betting will be authorised by the Organiser: Yes No

13. TRANSPORT REIMBURSEMENT HORSES / PONIES

Transport expenses to be paid by:
The Organiser at _____ per km.
The Athlete

14. WELCOME

The time and date of arrival of athletes, horses and their means of transport must be given to the Organiser in order to facilitate their arrival.

15. LOCAL TRANSPORTATION - ARRANGEMENTS FROM HOTEL TO SHOWGROUNDS

Walking distance

Organiser Shuttle Service

Public Transport to be paid by the Organiser / the Athlete

If paid by Athlete approximate cost per round trip:

Other:

16. ENTRY RIGHT TO SHOWGROUNDS/ACCREDITED PERSONS

Entry right to the stable area according to FEI Veterinary Regulations Articles 1008-1009.

NUMBER OF ACCREDITED PERSONS:

Athlete: 1

Partner: 1

Groom: 1

Horse Owner: 2 two (2) accreditations per horse acc. to FEI-Passport

17.SUSTAINABILITY

Please consider the environment when organising an FEI Event. Please find useful information on FEI Sustainability here: <http://inside.fei.org/fei/your-role/organisers/handbook>

XII. VETERINARY MATTERS

1. CUSTOMS FORMALITIES

Contact details for Customs Formalities:

Name: TRANSHIPICA INTERNATIONAL JESUS ESTEVEZ
Address: Asunción, 15. Brunete (Madrid-Spain)
Telephone: +34 918 158 276
Fax: +34 918 158 270
Email: info@jesusestevez.com
Opening hours:

2. HEALTH REQUIREMENTS

GENERAL

In accordance with the FEI Code of Conduct for the Welfare of the Horse it is imperative that all Horses at FEI Events are physically fit and free from infectious disease before being allowed to compete.

ENTRY OF HORSES

Required health tests and vaccinations:
Quarantine period:
Specimen Import Licence applied:

For questions or problems, please contact your Government Veterinary Services.

3. NATIONAL REQUIREMENTS

If applicable please provide: UE Requirements

Absolutely necessary for Spanish Authorities:

1. Horses coming from the rest of Spain: Transport and health certificate.
2. Horses coming from EU: International Transport Certificate valid between EU members.
3. Horses coming from other countries: Valid Certificate which is required at the moment of entry.

Only for horses travelling from Spain:

CODIGO DE EXPLOTACION O REGA: ES 110390000780
Dehesa Montenmedio
Carretera Nacional 340, Km.41.3
11150 Vejer de la Frontera (Cádiz-España)

Applications for health papers need to be done at the Show Office at least 7 days before of your departure.

The form will be available at the Show Office and need to be filled in complete and correctly at own responsibility.

When you enter the Sunshine Tour you must be able to submit the correct transport documents / health papers for each horse to the Show Office at your arrival. The OC

reserves the right to deny access when these legally valid documents cannot be displayed.

4. PONIES

FEI Veterinary Regulations, Chapter IX and Annex IX:

For all Pony Events, Ponies must be available for Pony Measurement if requested by the FEI.

5. INJURY SURVEILLANCE

FEI Veterinary Regulations, Chapter VIII:

Horses participating in FEI Events are subject to injury surveillance protocols; and in the event of fatality, a post mortem examination.

6. TRANSPORT OF HORSES

Horses must be fit to travel and be transported in suitable vehicles for the transport of horses. Any government requirements for disease testing and control must be requested well in advance, to ensure that the horse is in compliance by the time of arrival at the border of the country where the Event is taking place. Athletes, or their representatives, have the responsibility to comply with national legislation in both their country of origin and the host nation of the Event. Where necessary athletes must contact local government authorities or veterinary advisors for information regarding animal health requirements and transport legislation. Within the European Union (EU), this includes EU Council Regulation (EC) No 1/2005 concerning the protection of animals during transport within the Member States of the EU.

7. VENUE ARRIVAL INFORMATION & FITNESS TO COMPETE

7.1. PASSPORTS. FEI General Regulations Article 137

For all issues relating to FEI Horse Passports/FEI Recognition Cards please contact your National Federation.

All Horses competing at FEI Events must be registered with the FEI.

FEI Passports or FEI Recognition Cards (for those Horses with a national passport approved by the FEI) are compulsory for FEI Events.

NB: Horses entered in CIMs and in CSIP in their country of residence are not required to have an FEI Passport or FEI Recognition Card but must be properly registered with the FEI and identifiable (GRs 137.2).

Athletes who do not present a Horse's Passport and/or Recognition Card, or one that is not correctly validated or fail to meet other passport requirements will be **subject to Sanctions in accordance with Annex VI of the FEI Veterinary Regulations** and may not be allowed to compete.

NB for Horses permanently resident in a Member State of the European Union: all Horses must have a national EU passport in compliance with EU Regulations to which a FEI Recognition card is applied. The exception to this being Horses in possession of an FEI passport which has been continually revalidated without interruption.

7.2. VACCINATIONS - EQUINE INFLUENZA. FEI Veterinary Regulations Article 1003

Horses competing at FEI Events must comply with the requirements for Equine Influenza vaccination in accordance with the Veterinary Regulations and as summarised below.

VACCINATION	PROTOCOL	ELIGIBILITY TO ENTER VENUE
Primary Course	1 st Vaccination: day 0 2 nd Vaccination: day 21-92	May compete 7 days after the 2 nd Vaccination
First Booster	Within 7 months of the 2 nd vaccination of the Primary Course	May compete for 6 months +21 days after the 2 nd vaccination of the Primary Course Must not compete in the 7 days after receiving a vaccination
Boosters	MINIMUM: within one year of previous booster vaccination IF COMPETING: must be in the 6 months +21 days of the booster previous vaccination	Must have been vaccinated within 6 months +21 days before arriving at the Event Must not compete in the 7 days after receiving a vaccination

All FEI registered Horses intending to compete at FEI Events (including CIMs) must be vaccinated against Equine Influenza in accordance with these VRs. The exception being if the applicable domestic legislation prevents the use of Equine Influenza vaccines within the relevant territory

7.3. EXAMINATION ON ARRIVAL. FEI Veterinary Regulations Article 1031

On arrival at an Event venue, all Horses must undergo an examination by a veterinarian to confirm their identification from their passport and micro-chip ID (where present), their vaccination status and general health. To protect all horses attending events, any Horse with a questionable health status concerning vaccination, disease or other concerns, must be stabled within the isolation facilities provided by the Organising Committee pending a decision on entering the venue.

7.4. HORSE INSPECTIONS. FEI Veterinary Regulations Articles 1034-1042

All Horses will be assessed for their fitness to compete during the Horse Inspection. Any Horse demonstrating questionable fitness may be referred to the Holding Box for further veterinary examination. Horses not deemed fit to compete by the Inspection Panel will not be permitted to compete.

7.5. LIMB SENSITIVITY EXAMINATION. FEI Veterinary Regulations Articles 1048-1053

All Horses are subject to examination under the protocol for abnormal limb sensitivity throughout the period of an Event. For Jumping that includes, but is not limited to, between rounds and before the Jump Off. Horses may be examined once or on multiple occasions during the Period of an Event.

Horses may be selected for examination under the protocol randomly or they may be targeted. All Horses selected to be tested must submit promptly to the examination or are subject to immediate disqualification. There is no obligation to examine any specific number of Horses at an Event.

8. EQUINE ANTI-DOPING AND CONTROLLED MEDICATION PROGRAMME (EADCMP). FEI VETERINARY REGULATIONS, CHAPTER VII

8.1. SAMPLING. FEI VETERINARY REGULATIONS Chapter VII

All horses competing at FEI Events may be subject to sampling for the presence of Prohibited Substances in accordance with the Anti-Doping and Controlled Medication Regulations (EADCMRs). Horses may be selected for sampling in accordance with obligatory testing, targeted or random

sampling procedures. Refer to FEI Financial Charges for details of fees relating to Equine and Human Anti-Doping program (EADCMP), which OCs/NFs have the right to charge to the athlete (applicable for all FEI events worldwide).

8.2. ELECTIVE TESTING. FEI VETERINARY REGULATIONS ARTICLES 1058

Elective Testing may be carried out prior to an Event to check for the presence of Prohibited Substances. Please refer to <https://inside.fei.org/fei/cleansport/horses> for information and details.

XIII. HUMAN ANTI-DOPING

Athletes can be tested at any FEI Event, by the FEI or by other Anti-Doping Organisations with Testing jurisdiction. Organisers will have the responsibility to provide facilities and staff/volunteers to facilitate such Testing if requested by the FEI as outlined in article 22.3 of the FEI's Anti-doping Rules for Human Athletes (ADRHA).

The ADRHA rules are published on the FEI website at <http://inside.fei.org/content/anti-doping-rules>.

XIV. ADDITIONAL INFORMATION

1. THE FEI POLICY FOR ENHANCED COMPETITION SAFETY DURING THE COVID-19 PANDEMIC

The FEI Policy for Enhanced Competition Safety during the Covid-19 Pandemic ("Policy") (<https://inside.fei.org/system/files/FEI%20Policy%20for%20Enhanced%20Competition%20Safety%20during%20the%20Covid-19%20Pandemic%20-%20Effective%201%20July%202020%20-%20Updated%2012%20October%202020.pdf>) is mandatory and applies for any FEI Event taking place **as of 1 July 2020**. The Policy has been developed based on currently accepted best practices by the WHO and US Center for Disease Control (CDC) and will be continually reviewed and updated as more information becomes available. It is not intended to replace the applicable guidance and policies from domestic government and health authorities, but to supplement their recommendations with sport specific considerations.

The OC shall submit the risk assessment and mitigation plan (including name and contact details of the person in charge) to the FEI as an annex to the Event Schedule, **at the latest ten (10) working days before the event's deadline for Definite Entries**.

Events for which the FEI has not received the documented risk assessment and mitigation measures plan in accordance with article 2.1.g) of the Policy **will be removed from the FEI calendar** in accordance with Article 112.3 of the FEI General Regulations.

ASSUMPTION OF RISK / WAIVER OF LIABILITY

In consideration of being allowed to participate in the Event and related activities, all Participants (as defined in the Policy) acknowledge, appreciate, and agree that:

1. Participation includes possible exposure to and illness from infectious diseases including but not limited to COVID-19. While particular rules and personal discipline may reduce this risk, the risk of serious illness and death does exist; and,
2. The Participants knowingly and freely assume all such risks, both known and unknown, even if arising from the negligence of the OC or others, and assume full responsibility for their participation; and,
3. The Participants willingly agree to comply with the stated and customary terms and conditions for participation as regards protection against infectious diseases. If, however, a Participant observes any unusual or significant hazard during his/her presence or participation, the Participant will remove himself/herself from participation and bring such to the attention of the nearest official immediately; and,
4. The Participants, for themselves and on behalf of their heirs, assigns, personal representatives and next of kin, HEREBY RELEASE AND HOLD HARMLESS THE OC AND THE FEI, their officers, officials, agents, and/or employees, other participants,

sponsoring agencies, sponsors, advertisers, and if applicable, owners and lessors of premises used to conduct the event ("RELEASEES"), WITH RESPECT TO ANY AND ALL ILLNESS, DISABILITY, DEATH, or loss or damage to person or property, WHETHER ARISING FROM THE NEGLIGENCE OF RELEASEES OR OTHERWISE, to the fullest extent permitted by law.

The Participants confirm to have read this release of liability and assumption of risk agreement, fully understand its terms, understand that they have given up substantial rights.

2. INSURANCES AND NATIONAL REQUIREMENTS

Equestrian sports involve inherent dangerous risks. To the greatest extent permitted by law, the FEI and the FEI Event Organiser shall NOT be liable for any damages relating to loss of property or injury of any kind to Athletes, Owners, Support Personnel or Horses at or in connection with an FEI Event and the FEI expressly excludes all such liability.

2.1. ATHLETES, OWNERS AND SUPPORT PERSONNEL

2.1.1. Personal Accident and Health Insurance

It is your responsibility as an Athlete/Owner/ Support Personnel to ensure that you have adequate personal accident insurance in place to cover your participation at FEI Events and in particular to insure against any personal injury or medical expenses arising from an accident, injury or illness which may occur at a FEI Event.

You should check with your National Federation to confirm if your National Federation's insurance policy (if any) covers personal accidents and/or illnesses which may occur when you are attending/participating in FEI Events.

If your National Federation does not have a personal accident/health insurance policy or if the National Federation's insurance policy does not cover personal accident or health claims, then you should obtain your own personal accident and health insurance policy to cover your attendance/participation at FEI Events.

2.1.2. Personal Property Insurance

You should also ensure that you are insured against property loss, theft or damage which may occur at an FEI Event.

Again, the advice is to check with your National Federation to confirm if they have an insurance policy in place which would cover you in case of such property loss, theft or damage. If not, then you should obtain your own personal property insurance to cover such situations.

2.1.3. Press Equipment

Press equipment and other items left in the Press workroom, Press lockers, the Press Tribune or anywhere on the showgrounds are left entirely at the owner's risk. The Organising Committee does not accept any responsibility for any loss or damage to such equipment or items. Members of the Press are advised not to leave any equipment or personal items unattended.

2.2. ATHLETES AND OWNERS

2.2.1. Third Party Liability Insurance

As an Athlete/Owner you are personally responsible for damages to third parties caused by you, your employees, Support Personnel, your agents or your Horses. You are, therefore,

strongly advised to take out third-party liability insurance providing full coverage in relation to FEI Events at home and abroad, and to keep the policy up to date.

The FEI and the Organiser will NOT be responsible for any damage caused to third parties by you, your employees, Support Personnel, your agents or your Horses.

2.2.2. Additional Liability Information

Space for organiser to include reference to National Laws when necessary

2.2.3. Horse Insurance

As an Owner you should ensure that your Horses are adequately insured against any injuries or illnesses they may sustain while participating at a FEI Event.

3. PROTESTS/APPEALS

To be valid, all Protests and Appeals must be made in writing and accompanied by a deposit of CHF 150.- or equivalent.

Protest and appeal forms are available on the FEI website:

Protests: <http://inside.fei.org/sites/default/files/FEI%20Protest%20Form.pdf>

Appeals: <http://inside.fei.org/sites/default/files/FEI%20Appeal%20Form.pdf>

4. SCHOOLING DURING COMPETITIONS

Athletes wishing to school during speed competitions (Table A and Table C) must inform the OC before these competitions begin. These athletes will start first in these competitions.

5. STEWARDING

- If an athlete is uncertain as to whether the boots he/she intends to use during an event are allowed, he/she or his/her representative should show the boots to the Chief Steward for his/her opinion before the boots are used in training or in competition.
- In addition, athletes are to be made aware that hind boots must be removed and placed again on the horse's legs in the presence of a Steward while in the warm-up arena prior to entering the competition arena for certain competitions. (If bandages are used in place of boots, athletes are not required to remove the bandages in the warm-up arena.) This procedure is compulsory for competitions for which boot and bandage control is mandatory, that is the Nations Cup, Grand Prix, and the competition with the highest prize money, and is at the discretion of the Chief Steward for other competitions.
- As an alternative to carrying out this procedure at the time designated by the Steward an athlete may ask his/her groom to take the boots to the in-gate and place them on the horse's legs in front of the Steward prior to the combination entering the arena.
- The Steward has the authority to intervene if a boot is deemed excessively tight by instructing that the boot be removed and put on again correctly. *[Stewards are to note that it is normal for a horse's gait to be somewhat affected immediately after boots have been removed and re-placed.]* If an athlete or his/her groom refuses to remove and replace the boot(s) when instructed to do so by the Steward, a Yellow Warning Card will be issued to the athlete in question.

- If it is deemed impossible or unsafe to remove the hind boots in the warm-up arena prior to the combination entering the competition arena, due to an extremely excited or nervous horse, the boots of the horse in question are to be removed by the athlete/groom following the athlete's round upon leaving the arena and inspected by the Steward. This inspection may be carried out during the boot and bandage control if the boot and bandage control is carried out for the competition in question.
- This procedure does not replace boot and bandage control after completion of an athlete's round for competitions for which boot and bandage control is mandatory (refer to JRs Art. 244.1).

6. DISPUTES

In the event of any discussion concerning the interpretation of the schedule (in translated languages), the English version will be decisive.

7. MODIFICATION TO SCHEDULE

In exceptional circumstances, together with the approval of Chefs d'Equipe, host NF delegate, if any, and the Ground Jury, the Organiser may change the schedule in order to clarify any matter arising from an omission or due to unforeseen circumstances. Any such changes must be notified to all athletes and officials as soon as possible and they must be reported to the FEI Secretary General by the Technical Delegate, the President of the Ground Jury or the Foreign Judge, as applicable.

8. ADDITIONAL INFORMATION FROM THE OC

Space for organiser to include any additional information

FEI APPROVED SCHEDULE

Vejer de la Frontera (ESP) 14-17 / 21-24 October 2021

Age of Athletes and Horses according to the Event's Category

Event's Category	Age of Athletes (Refer to JRs 255)	Age of Horses
Olympic Games/WEG	As of 18 th year	Min 9 y.o.
Continental Championships Senior	As of 18 th year	Min 8 y.o.
Regional Championships/Games	As of 18 th year As of 16 th year if height of obstacles max.1.40m (JRs Annex IX, Art. 6.1)	Min. 8 y.o. Min. 7 y.o. if height of obstacles max. 1.40m (JRs Art. 254.1.1)
World Cup Final	As of 18 th year	Min. 9 y.o.
Nations Cup Final	As of 18 th year	Min. 8 y.o.
CSI-W3*-5*/CSIO3*-5*/CSI3*-5* Grand Prix, World Cup, Nations Cup, Power and Skill, Derby or Competition with the highest prize money Other Competitions Other Competitions if height max. 1.40m Other Competitions if height max. 1.30m	As of 18 th year As of 16 th year As of 14 th year As of 12 th year	Min. 7 y.o.
CSIO1*-2*/CSIO-W1*-2* Grand Prix, World Cup, Nations Cup, Power and Skill, Derby or Competition with the highest prize money Other Competitions Other Competitions if height max. 1.40m Other Competitions if height max. 1.30m	As of 18 th year As of 16 th year As of 14 th year As of 12 th year	Min. 6 y.o. *
CSI-W2*/CSI2* World Cup, Power and Skill, Derby Grand Prix, if not the World Cup Competition, and other Competitions Grand Prix, if not the World Cup Competition, and other Competitions if height max. 1.40m Grand Prix, if not the World Cup Competition, and other Competitions if height max. 1.30m	As of 18 th year As of 16 th year As of 14 th year As of 12 th year	Min. 6 y.o.
CSI-W1*/CSI1* World Cup, Power and Skill, Derby Grand Prix, if not the World Cup Competition, and other Competitions Grand Prix, if not the World Cup Competition, and other Competitions if height max. 1.30m	As of 18 th year As of 14 th year As of 12 th year	Min. 6 y.o.
CH-Y	As of 16 th year to end 21 st year	Min. 7 y.o.
CSI/CSIO-Y	As of 16 th year to end 21 st year	Min. 7 y.o.
CH-J	As of 14 th year to end 18 th year	Min. 7 y.o.
CSI/CSIO-J	As of 14 th year to end 18 th year	Min. 6 y.o.
CSI/CSIO-Ch/CH-Ch	As of 12 th year to end 14 th year	Min. 6 y.o.
CSI/CSIOP/CH-P	As of 12 th year to end 16 th year Ponies must be registered as ponies with FEI	Min. 6 y.o.
CSIU-25	As of 16 th year to end 25 th year for all CSIU-25 comp. As of 14 th year if height max. 1.40m (to end 25 th year)	Min. 7 y.o.
CSIV	As of 45 th year	Min. 6 y.o.
CSIAm	As of 12 th year until end of 13 th year if competition height is max. 1.30 m; as of 14 th year if height exceeds 1.30 m.	Min. 6 y.o.
CSIYH	Per Art. 255.2	Min. 5 y.o. – Max. 8 y.o.
CH-M-YH-S	As of 18 th year or 16 year for athletes qualified with the same horse	5 y.o. / 6 y.o. / 7 y.o.

Art. 254.1.1: Horses entered for CSIO2 Events at which the Nations Cup is built to the dimensions set forth in JRs Art. 264.3 for 2* Events must be at least 6 years old; Horses entered for CSIO2* Events at which the Nations Cup is built to the dimensions set forth in JRs Art. 264.3 for 3* Events or higher must be at least 7 years old.

9. PRIZE MONEY DISTRIBUTION

Prize Money Distribution Chart 1: Prize money distribution with **25%** of prize money for the winner *updated 30.01.2019*

N° of starters	up to 11	12-48		49-100		101-110 declared starters		111-120 declared starters	
N° of prizes	Same as the number of starters who finish the competition	12		First 12 acc. to percentages below; extra prizes for 13 th to last*		First 16 acc. to percentages below; extra prizes for 17 th to last*		First 20 acc. to percentages below; extra prizes for 21 st to last*	
Prize money	Example: Competition prize money = 40'000.-	100% = 40'000		100% = 40'000		133% = 53'200		166% = 66'400	
		%		%		%		%	
1	All athletes who complete the competition receive prize money, to be distributed according to the percentages at right from the 1 st placed to the last placed athlete. The remaining prizes, i.e. the prizes foreseen up to 12 th place, are then distributed in descending order starting again with the 1 st placed athlete until there are no more prizes to be distributed. See examples below. 5 athletes: winner gets prize for 1 st (25%) and the other athletes get the relevant percentages down to the last athlete, i.e. 5 th place (7%). The prize for 6 th (5.5%) is then given to the winner, the prize for 7 th (4%) is given to the 2 nd placed athlete, the prize for 8 th (3%) is given to the 3 rd placed athlete, the prize for 9 th (3%) is given to the 4 th placed athlete and the prize for 10 th (2.5%) is given to the 5 th placed athlete. The prize for 11 th (2.5%) is then given to the 1 st placed athlete and the prize for 12 th (2.5%) is given to the 2 nd placed athlete. 10 athletes: winner gets prize for 1 st (25%) and 11 th (2.5%), second placed gets prize for 2 nd (20%) and 12 th (2.5%); the remaining athletes receive the prize money for their placing as per the percentages from 3 rd to 10 th place.	25	10'000	25	10'000	25	13'300	25	16'600
2		20	8000	20	8000	20	10'640	20	13'280
3		15	6000	15	6000	15	7980	15	9960
4		10	4000	10	4000	9	4788	8	5312
5		7	2800	7	2800	6.5	3458	6	3984
6		5.5	2200	5.5	2200	5	2660	4.5	2988
7		4	1600	4	1600	3.5	1862	3	1992
8		3	1200	3	1200	2.5	1330	2.5	1660
9		3	1200	3	1200	2.5	1330	2.5	1660
10		2.5	1000	2.5	1000	2	1064	2	1328
11		2.5	1000	2.5	1000	2	1064	2	1328
12		n/a	2.5	1000	2.5	1000	2	1064	2
Total	40'000	100%	40'000	100%	40'000				
13						1.5	798	1.5	996
14						1.5	798	1.5	996
15						1	532	1	664
16						1	532	1	664
Total						100%	53'200		
17								1	664
18								0.5	332
19								0.5	332
20								0.5	332
Total								100%	66'400
									Extra prizes for 21 st to last place*

* The OC must provide additional prizes for the remaining placed athletes to fulfil quota of one prize per four athletes. The amount to be given to each of these athletes must be stated in the Schedule.

Prize Money Distribution Chart 2: Prize money distribution with **33%** of prize money for the winner *updated 30.01.2019*

N° of starters	up to 11	12-48		49-100		101-110 declared starters		111-120 declared starters	
N° of prizes	Same as the number of starters who finish the competition	12		First 12 acc. to percentages below; extra prizes for 13 th to last*		First 16 acc. to percentages below; extra prizes for 17 th to last*		First 20 acc. to percentages below; extra prizes for 21 st to last*	
Prize money	Example: Competition prize money = 40'000.-	100% = 40'000		100% = 40'000		133% = 53'200		166% = 66'400	
		%		%		%		%	
1	All athletes who complete the competition receive prize money, to be distributed according to the percentages at right from the 1 st placed to the last placed athlete. The remaining prizes, i.e. the prizes foreseen up to 12 th place, are then distributed in descending order starting again with the 1 st placed athlete until there are no more prizes to be distributed. See examples below. 5 athletes: winner gets prize for 1 st (25%) and the other athletes get the relevant percentages down to the last athlete, i.e. 5 th place (7%). The prize for 6 th (5.5%) is then given to the winner, the prize for 7 th (4%) is given to the 2 nd placed athlete, the prize for 8 th (3%) is given to the 3 rd placed athlete, the prize for 9 th (3%) is given to the 4 th placed athlete and the prize for 10 th (2.5%) is given to the 5 th placed athlete. The prize for 11 th (2.5%) is then given to the 1 st placed athlete and the prize for 12 th (2.5%) is given to the 2 nd placed athlete. 10 athletes: winner gets prize for 1 st (25%) and 11 th (2.5%), second placed gets prize for 2 nd (20%) and 12 th (2.5%); the remaining athletes receive the prize money for their placing as per the percentages from 3 rd to 10 th place.	33	13'200	33	13'200	33	17'556	33	21'912
2		20	8000	20	8000	19.5	10'374	19.5	12'948
3		15	6000	15	6000	14.5	7714	14.5	9628
4		10	4000	10	4000	9.5	5054	8.5	5644
5		6	2400	6	2400	5.5	2926	5	3320
6		4.5	1800	4.5	1800	4	2128	3.5	2324
7		3	1200	3	1200	2.5	1330	2.5	1660
8		2.5	1000	2.5	1000	2	1064	2	1328
9		2	800	2	800	2	1064	2	1328
10		2	800	2	800	2	1064	2	1328
11		1	400	1	400	1	532	1	664
12		n/a	1	400	1	400	1	532	1
Total	40'000	100%	40'000	100%	40'000				
13						1	532	1	664
14						1	532	1	664
15						1	532	1	664
16						0.5	266	0.5	332
Total						100%	53'200		
17								0.5	332
18								0.5	332
19								0.5	332
20								0.5	332
Total								100%	66'400
									Extra prizes for 21 st to last place*

* The OC must provide additional prizes for the remaining placed athletes to fulfil quota of one prize per four athletes. The amount to be given to each of these athletes must be stated in the Schedule.

In case of a tie for the 12th place in a competition with 12 to 48 starters, the prize money foreseen for the 12th place will be divided equally among the athletes concerned.

For Competitions run in two rounds with more than 12 starters in 2nd round:

OCs that indicate in the schedule that a specific number (that is more than 12) of athletes will return for the second round will be permitted to distribute the prize money for that competition among all the athletes taking part in the second round, even if the second round is followed by a jump-off in case of a tie on penalties for first place after the second round.

DEDUCTIONS FROM PRIZE MONEY AT COMPETITIONS:

Full details of any deductions from prize money must be outlined in the schedule. This includes government taxes. If it is necessary for Organisers to deduct such taxes, they must provide participants with an official form indicating the amount of tax deducted.

The tax form must be provided to the athletes upon arrival and returned to the Organiser prior to departing.

According to the Spanish Law concerning Physical Person Return Tax (I.R.P.F), the OC must deduct the rate fixed by the above-mentioned law over all the sums paid to the competitors. This rate differs according to the athletes nationality. It depends on the international agreements established by Spain with the different European countries. Currently, the tax rate (I.R.P.F) for Foreign Competitors is 24%.

All riders may ask for further information to:

MINISTERIO DE ECONOMIA Y HACIENDA
Delegación de Hacienda de Madrid
c/ Guzman El Bueno, 73
28015 MADRID (ESPAÑA)

Prize money is including 21% VAT.

IMPORTANT

The total amount of prize money shown for each Competition in the schedule must be distributed. (FEI General Regulations articles 127 and 128)

For details of the prize money breakdown for each competition please refer to the tables at the end of this document; the Organiser must specify which of the two (2) tables will be used. The total prize money for the Competition must be distributed among the first twelve (12) placed athletes.

The Organiser must provide additional created prizes for athletes placed beyond twelfth (12th) place. The minimum amount for each of these additional prizes, for athletes placed from thirteenth (13th) to last place, must be clearly specified in the approved schedule and not exceed the prize money of the athlete placed twelfth (12th)

10. MAXIMUM NUMBER OF STARTERS PER COMPETITION***Annex VI FEI Jumping Rules:**

Maximum 100 starters per Competition other than the GP. If more than 100 starters are declared, the OC must provide the following percentages of additional prize money for every ten declared starters, up to 120 declared starters:

- 101 to 110 declared starters: the OC must provide 133% of the original Competition prize money, which is to be distributed among the 16 best placed athletes in the Competition according to the prize money distribution chart I or II. The additional prize money provided by the OC is not taken into consideration with regard to the overall prize money that determines the star level of the Event or the Longines Ranking point group of the Competition, if applicable.
- 111 to 120 declared starters: the OC must provide 166% of the original Competition prize money, which is to be distributed among the 20 best placed athletes in the Competition

according to the prize money distribution chart I or II. The additional prize money provided by the OC is not taken into consideration with regard to the overall prize money that determines the star level of the Event or the Longines Ranking point group of the Competition, if applicable.

If more than 120 starters are declared, the OC must split the Competition into two groups and provide 200% of the original Competition prize money which is to be divided equally between the two groups. The additional prize money provided by the OC is not taken into consideration with regard to the overall prize money that determines the star level of the Event or the Longines Ranking point group of the Competition, if applicable.

OCs may apply either of the following methods for splitting the Competition:

The competition is split into two groups before it starts. There may be athletes with multiple horses in each group but all horses of any one athlete must be in the same group. If it is not possible to have two groups of equal size there may be a different number of starters in each group;

OR

The competition is run as one single competition and split afterward into two groups and the classification established as follows: the athlete with the best score is the winner of the first group, the athlete with the second best score is the winner of the second group and so on until prizes have been allocated to 25% of the total number of starters. *NB: In this case separate results must be sent to the FEI for each of the two groups, e.g. results for Competition 1a and for Competition 1b.*

In both cases above each group must offer the same amount of prize money. For the avoidance of doubt, it is the number of declared starters in the Competition, not the final number of starters, that determines whether the Competition must be split.

If there are more than 200 declared starters, the OC must split the Competition into three groups and provide the same percentages of additional prize money as indicated above (100% of original Competition prize money to be provided for each of the three groups if each group has 100 or fewer starters; 133% of original prize money to be provided for each group if any of the three groups has 101-110 starters; 166% of original prize money to be provided for each if any of the three groups has 111-120 starters).

³ For CSI-W Events with a Grand Prix Competition in addition to the FEI World Cup™ competitions, the minimum prize money requirements indicated above for the Grand Prix apply only to the FEI World Cup™ Competition as it has the status of a Grand Prix; the Grand Prix Competition at such Events cannot offer more prize money than the prize money offered for the FEI World Cup™ Competition. Refer to the FEI Jumping World Cup™ rules for details relating to date of implementation of this rule at CSI-W Events.

11. GLOSSARY

***Glossary FEI Jumping Rules:**

Fees:

- Compulsory Fee: Compulsory Fees are fees that may be charged by the OC for costs/services not included in the Entry Fee. Compulsory Fees, if charged, must be paid by the Athletes concerned as outlined below. Only the following Compulsory Fees may be charged by the OC, providing full details of the amount to be charged is included in the Schedule and approved by the FEI:
 - NF fee if applicable
 - NF medication control programme fee if applicable
 - FEI EADCMR fee if applicable (OC to indicate in the Schedule if the EADCMR fee is included in the Entry Fee or not)
 - Fee for health/customs-related documents for Horses if these have been requested by the Athlete.
 - Fee for manure disposal (maximum € 40 per horse per Event)

- Fee for lorry parking if applicable (The fee indicated in the Schedule may only be charged per lorry not per Athlete.)
- Fee for electric hook-up for lorry (The fee indicated in the Schedule may only be charged per lorry, not per Athlete.)
- Discretionary Fee: Discretionary Fees are fees that may be charged for optional commodities/services that may be purchased by an Athlete if he so chooses and that do not affect the equity of the Athlete's right to compete at the Event or the well-being of the Horse, such as:
 - VIP or premium parking
 - VIP table
 - Extra box for tack or for non-competing Horse
 - Extra bedding and/or fodder (details to be included e.g. shavings, straw, hay)
 - Premium stabling (all stabling at the Event must meet minimum FEI requirements)
- Entry Fee: The Entry Fee is the fee charged to participate in an Event with one Horse and covers the following:
 - Stabling of one Horse for the duration of the Event (includes cleaning and disinfecting stables before the event, including between Events that are part of Tours, water and electricity in the stables, first bedding or a fixed amount of bedding depending on the type of event and 24 hour security services for the stables)
 - Use of all facilities at the Event (no infrastructure fees may be charged)
 - Right to participate in all Competitions in accordance with the conditions in the Schedule (no nomination fees or start fees may be charged)
 - Administrative/Office fees (includes all services relating to administration of the Event and running of the Competitions: data/results/timing services, bookkeeping and accreditation services)

XV. ANNEXES

1. FEI ENTRY SYSTEM

Please fill the form below in order to provide you and the other members of your committee or your IT Providers access to the FEI Entry System.

FEI ID¹: 10006341

Name*: TERESA

First Name*: BLÁZQUEZ ABASCAL

E-Mail*: info@sunshinetour.net

Access Rights*: Admin² Consult³

Events⁴:

FEI ID¹: 10114813

Name*: BEGOÑA

First Name*: QUIRÓS CABRERA

E-Mail*: office@sunshinetour.net

Access Rights*: Admin² Consult³

Events⁴:

FEI ID¹:

Name*:

First Name*:

E-Mail*:

Access Rights*: Admin² Consult³

Events⁴:

¹ If already have an FEI user account.

² Provides you the required access to manage entries and substitutions and download entries/lists.

³ You are just able to consult and download the entries/lists.

⁴ Leave the field blank if the user deals with the entries of all events in the show.

*** Mandatory Fields**

2. RESULTS

In order to proceed with the results publication and for qualification purposes the FEI requires results **to be uploaded directly on the FEI Database** within two days after the conclusion of the event.

All relevant information, file format and tutorial can be found on this page:

<https://inside.fei.org/fei/your-role/it-services/xml-format>

If you or your provider are unable to produce the required files, results will be accepted by e-mail to results@fei.org, in the proper Excel or "XML" format immediately after the event.

Please refer to compulsory format for CSIs/CSIOs/Championships and Games; the file can be downloaded using the following link:

<https://inside.fei.org/fei/your-role/it-services/results/jumping-results-forms>

All results must include FEI Passport Registration number of horses and FEI ID number of Riders.

Please note that as per Art. 109.6 (GR): OCs of International Jumping Events must inform the FEI and NFs whose teams or individuals have taken part, of the results and prize money paid to each placed Athlete and team, within two (2) days following the Event, unless otherwise specified for qualification and ranking reasons as communicated by the FEI. Failure from OCs of International Events to provide the FEI with the appropriate result(s) and/or prize money information by the aforesaid deadline and/or in the aforesaid format shall entail a warning for the first violation and thereafter a fine of CHF 1'000.- per violation.

The FEI may request a copy of the official PDF result signed by the relevant Officials at the Event.

THE APPENDIX (8 PAGES) IS PART OF THIS APPROVED AND SIGNED SCHEDULE AND MUST BE DISTRIBUTED TO ALL OFFICIALS AND NFs AND IS AVAILABLE TO OTHERS UPON REQUEST